

IgE Monoclonal Antibody (Ige21), FITC, eBioscience™

Product Details	
Size	100 Tests
Species Reactivity	Human
Published Species	Human
Host/Isotype	Mouse / IgG1, kappa
Recommended Isotype Control	Mouse IgG1 kappa Isotype Control (P3.6.2.8.1), FITC, eBioscience™
Class	Monoclonal
Type	Antibody
Clone	Ige21
Conjugate	FITC
Excitation/Emission Max	498/517 nm
Form	Liquid
Concentration	5 µL/Test
Purification	Affinity chromatography
Storage buffer	PBS, pH 7.2, with 0.2% BSA
Contains	0.09% sodium azide
Storage conditions	4° C, store in dark, DO NOT FREEZE!
RRID	AB_10717244

Applications	Tested Dilution	Publications
Flow Cytometry (Flow)	5 µL (0.25 µg)/test	5 Publications

Product Specific Information

Description: The monoclonal antibody IgE21 recognizes the immunoglobulin E class of antibodies. The natural levels of IgE in the serum are quite low, comprising only a small portion of the total immunoglobulin. IgE plays a role in allergy responses by binding to mast cells and basophils through the Fc epsilon receptor I which results in the release of histamine and other molecules. The IgE is produced by terminally differentiated plasma B cells and basophils. Like all immunoglobulins, IgE is expressed as a soluble molecule as well as a membrane bound form. IgE21 recognizes both forms.

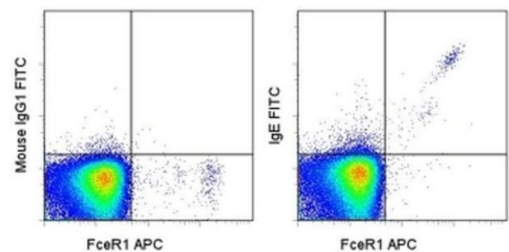
Applications Reported: This Ige21 antibody has been reported for use in flow cytometric analysis.

Applications Tested: This Ige21 antibody has been pre-titrated and tested by flow cytometric analysis of normal human peripheral blood cells. This can be used at 5 µL (0.25 µg) per test. A test is defined as the amount (µg) of antibody that will stain a cell sample in a final volume of 100 µL. Cell number should be determined empirically but can range from 10⁵ to 10⁸ cells/test.

Excitation: 488 nm; **Emission:** 520 nm; **Laser:** Blue Laser.

Filtration: 0.2 µm post-manufacturing filtered.

Product Images For IgE Monoclonal Antibody (Ige21), FITC, eBioscience™



IgE Antibody (11-6986-42) in Flow
Staining of normal human peripheral blood cells with Anti-Human Fc epsilon Receptor I alpha (FcεR1) APC (Product # 17-5899-42) and Mouse IgG1 K Isotype Control FITC (Product # 11-4714-42) (left) or Anti-Human IgE FITC (right). Cells in the lymphocyte gate were used for analysis.

5 References

Flow Cytometry (5)

Immunity	Year 2020
Human Mast Cell Proteome Reveals Unique Lineage, Putative Functions, and Structural Basis for Cell Ablation.	Species Human
"11-6986 was used in Flow cytometry/Cell sorting to identify a mast-cell-specific proteome signature, indicative of a unique lineage, only distantly related to other immune cell types, including innate immune cells."	
Authors: Plum T,Wang X,Rettel M,Krijgsveld J,Feyerabend TB,Rodewald HR	
Nature communications	Year 2020
The mechanistic and functional profile of the therapeutic anti-IgE antibody ligelizumab differs from omalizumab.	Species Human
"11-6986 was used in Flow cytometry/Cell sorting to investigate and compare the molecular binding profile and functional mechanisms of action of the anti-IgE antibody ligelizumab and omalizumab."	
Authors: Gasser P,Tarchevskaya SS,Guntern P,Brigger D,Ruppli R,Zbären N,Kleinboelting S,Heusser C,Jardetzky TS, Eggel A	

[View more Flow references on thermofisher.com](#)

More applications with references on thermofisher.com

For Research Use Only. Not for use in diagnostic procedures. Not for resale without express authorization. Products are warranted to operate or perform substantially in conformance with published Product specifications in effect at the time of sale, as set forth in the Production documentation, specifications and/or accompanying package inserts ("Documentation"). No claim of suitability for use in applications regulated by FDA is made. The warranty provided herein is valid only when used by properly trained individuals. Unless otherwise stated in the Documentation, this warranty is limited to one year from date of shipment when the Product is subjected to normal, proper and intended usage. This warranty does not extend to anyone other than the Buyer. Any model or sample furnished to Buyer is merely illustrative of the general type and quality of goods and does not represent that any Product will conform to such model or sample. NO OTHER WARRANTIES, EXPRESS OR IMPLIED, ARE GRANTED INCLUDING WITHOUT LIMITATION, IMPLIED WARRANTIES OF MERCHANTABILITY, FITNESS FOR ANY PARTICULAR PURPOSE, OR NON-INFRINGEMENT. BUYER'S EXCLUSIVE REMEDY FOR NON-CONFORMING PRODUCTS DURING THE WARRANTY PERIOD IS LIMITED TO REPAIR, REPLACEMENT OF OR REFUND FOR THE NON-CONFORMING PRODUCT(S) AT SELLER'S SOLE OPTION. THERE IS NO OBLIGATION TO REPAIR, REPLACE OR REFUND FOR PRODUCTS AS THE RESULT OF (I) ACCIDENT, DISASTER OR EVENT OF FORCE MAJEURE, (II) MISUSE, FAULT OR NEGLIGENCE OF OR BY BUYER, (III) USE OF THE PRODUCTS IN A MANNER FOR WHICH THEY WERE NOT DESIGNED, OR (IV) IMPROPER STORAGE AND HANDLING OF THE PRODUCTS. Unless otherwise expressly stated on the Product or in the documentation accompanying the Product, the Product is intended for research only and is not to be used for any other purpose, including without limitation, unauthorized commercial uses, in vitro diagnostic uses, ex vivo or in vivo therapeutic uses, or any type of consumption by or application to human or animals.