

# IL-1 beta Monoclonal Antibody (CRM56), FITC, eBioscience™

## Product Details

Size	100 Tests
Species	Human
Expression System	Mouse / IgG1
Recommended Isotype Control	Mouse IgG1 kappa Isotype Control (P3.6.2.8.1), FITC, eBioscience™
Class	Monoclonal
Type	Antibody
Clone	CRM56
Conjugate	FITC
Form	Liquid
Concentration	5 µL/Test
Purification	Affinity chromatography
Storage buffer	PBS, pH 7.2, with 0.1% gelatin, 0.2% BSA
Contains	0.09% sodium azide
Storage Conditions	4° C, store in dark, DO NOT FREEZE!
RRID	AB_10598802

Applications	Tested Dilution	Publications
Flow Cytometry (Flow)	5 µL (0.125 µg)/test	3 Publications
Neutralization (Neu)	-	1 Publication

## Product Specific Information

**Description:** The CRM56 antibody reacts with human and baboon interleukin-1 beta; (IL-1 beta). IL-1 beta is a 17 kDa factor secreted primarily by monocytes. IL-1 has effects on T-helper cells, inducing IL-2 secretion and expression of IL-2 receptors. IL-1 has effects on B cells, promoting cell proliferation and immunoglobulin synthesis.

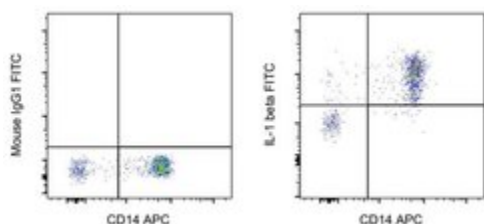
**Applications Reported:** The CRM56 antibody has been reported for use in intracellular flow cytometric analysis.

**Applications Tested:** This CRM56 antibody has been pre-titrated and tested by intracellular staining and flow cytometric analysis of stimulated normal human peripheral blood cells. This can be used at 5 µL (0.125 µg) per test. A test is defined as the amount (µg) of antibody that will stain a cell sample in a final volume of 100 µL. Cell number should be determined empirically but can range from 10<sup>5</sup> to 10<sup>8</sup> cells/test.

**Excitation:** 488 nm; **Emission:** 520 nm; **Laser:** Blue Laser.

**Filtration:** 0.2 µm post-manufacturing filtered.

## Product Images For IL-1 beta Monoclonal Antibody (CRM56), FITC, eBioscience™



### IL-1 beta Antibody (11-7018-42) in Flow

Normal human peripheral blood cells were stimulated for 4 hours with LPS (Product # 00-4976-03) in the presence of Brefeldin A (Product # 00-4506-51). Cells were then surface stained with CD14 Monoclonal Antibody, APC (Product # 17-0149-42), followed by intracellular staining using the Intracellular Fixation and Permeabilization Buffer Set (Product # 88-8824-00) and protocol, with and Mouse IgG1 kappa Isotype Control, FITC (Product # 11-4714-82) (left) or CRM56 Monoclonal Antibody, FITC (right). Cells in the monocyte gate were used for analysis.

[View more figures on thermofisher.com](#)

## 4 References

### Flow Cytometry (3)

Journal of extracellular vesicles

#### Circulating LL37 targets plasma extracellular vesicles to immune cells and intensifies Behçet's disease severity.

"Published figure using IL-1 beta monoclonal antibody (Product # 11-7018-42) in Flow Cytometry"

Authors: Kahraman T,Gucluler G,Simsek I,Yagci FC,Yildirim M,Ozen C,Dinc A,Gursel M,Ikromzoda L,Sutlu T,Gay S, Gursel I

Species

Not Applicable

Dilution

Not Cited

Year

2020

Oncotarget

#### A multi-stage process including transient polyploidization and EMT precedes the emergence of chemoresistent ovarian carcinoma cells with a dedifferentiated and pro-inflammatory secretory phenotype.

"Published figure using IL-1 beta monoclonal antibody (Product # 11-7018-42) in Flow Cytometry"

Authors: Rohnalter V,Roth K,Finkernagel F,Adhikary T,Obert J,Dorzweiler K,Bensberg M,Müller-Brüsselbach S,Müller R

Species

Not Applicable

Dilution

Not Cited

Year

2015

[View more Flow references on thermofisher.com](#)

### Neutralization (1)

American journal of transplantation : official journal of the American Society of Transplantation and the American Society of Transplant Surgeons

#### Differential requirement for P2X7R function in IL-17 dependent vs. IL-17 independent cellular immune responses.

"Published figure using IL-1 beta monoclonal antibody (Product # 11-7018-42) in Flow Cytometry"

Authors: Sullivan JA,Jankowska-Gan E,Shi L,Roenneburg D,Hegde S,GreenSPAN DS,Wilkes DS,Denlinger LC, Burlingham WJ

Species

Not Applicable

Dilution

Not Cited

Year

2014

For Research Use Only. Not for use in diagnostic procedures. Not for resale without express authorization. Products are warranted to operate or perform substantially in conformance with published Product specifications in effect at the time of sale, as set forth in the Production documentation, specifications and/or accompanying package inserts ("Documentation"). No claim of suitability for use in applications regulated by FDA is made. The warranty provided herein is valid only when used by properly trained individuals. Unless otherwise stated in the Documentation, this warranty is limited to one year from date of shipment when the Product is subjected to normal, proper and intended usage. This warranty does not extend to anyone other than the Buyer. Any model or sample furnished to Buyer is merely illustrative of the general type and quality of goods and does not represent that any Product will conform to such model or sample. NO OTHER WARRANTIES, EXPRESS OR IMPLIED, ARE GRANTED INCLUDING WITHOUT LIMITATION, IMPLIED WARRANTIES OF MERCHANTABILITY, FITNESS FOR ANY PARTICULAR PURPOSE, OR NON INFRINGEMENT. BUYER'S EXCLUSIVE REMEDY FOR NON-CONFORMING PRODUCTS DURING THE WARRANTY PERIOD IS LIMITED TO REPAIR, REPLACEMENT OF OR REFUND FOR THE NON-CONFORMING PRODUCT(S) AT SELLER'S SOLE OPTION. THERE IS NO OBLIGATION TO REPAIR, REPLACE OR REFUND FOR PRODUCTS AS THE RESULT OF (I) ACCIDENT, DISASTER OR EVENT OF FORCE MAJEURE, (II) MISUSE, FAULT OR NEGLIGENCE OF OR BY BUYER, (III) USE OF THE PRODUCTS IN A MANNER FOR WHICH THEY WERE NOT DESIGNED, OR (IV) IMPROPER STORAGE AND HANDLING OF THE PRODUCTS. Unless otherwise expressly stated on the Product or in the documentation accompanying the Product, the Product is intended for research only and is not to be used for any other purpose, including without limitation, unauthorized commercial uses, in vitro diagnostic uses, ex vivo or in vivo therapeutic uses, or any type of consumption by or application to human or animals.