

# IL-2 Monoclonal Antibody (JES6-5H4), FITC, eBioscience™

Product Details	
Size	100 µg
Species Reactivity	Mouse
Published Species	Human, Mouse
Host/Isotype	Rat / IgG2b, kappa
Recommended Isotype Control	Rat IgG2b kappa Isotype Control (eB149/10H5), FITC, eBioscience™
Class	Monoclonal
Type	Antibody
Clone	JES6-5H4
Conjugate	FITC
Form	Liquid
Concentration	0.5 mg/mL
Purification	Affinity chromatography
Storage buffer	PBS, pH 7.2, with 0.1% gelatin
Contains	0.09% sodium azide
Storage Conditions	4° C, store in dark, DO NOT FREEZE!
RRID	AB_465382

Applications	Tested Dilution	Publications
Flow Cytometry (Flow)	0.5 µg/test	15 Publications
ELISA (ELISA)	-	3 Publications

## Product Specific Information

Description: The JES6-5H4 antibody reacts with mouse interleukin-2 (IL-2), a 17 kDa T cell growth factor and a major immunoregulatory cytokine.

Applications Reported: JES6-5H4 has been reported for use in intracellular staining and flow cytometric analysis.

Applications Tested: The JES6-5H4 is offered in 2 formats:

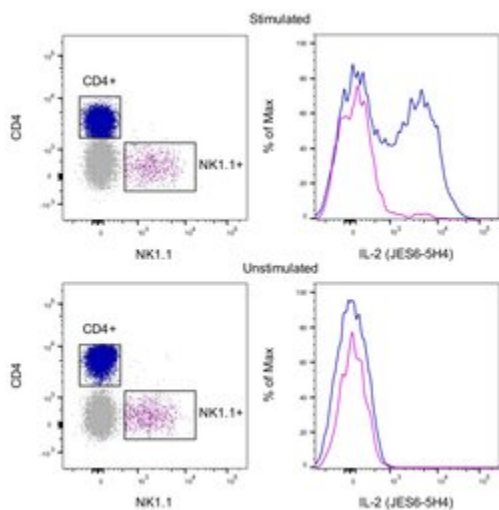
- µg size: has been tested by intracellular staining and flow cytometric analysis and can be used at less than or equal to 0.5 µg per test. A test is defined as the amount (µg) of antibody that will stain a cell sample in a final volume of 100 µL. Cell number should be determined empirically but can range from 10<sup>5</sup> to 10<sup>8</sup> cells/test. It is recommended that the antibody be carefully titrated for optimal performance in the assay of interest.

- test size: has been pre-titrated and tested by intracellular staining and flow cytometric analysis. Refer to catalog number suffix on the vial for amount to use per test: -41 is 5 µL (0.25 µg) per test. A test is defined as the amount (µg) of antibody that will stain a cell sample in a final volume of 100 µL. Cell number should be determined empirically but can range from 10<sup>5</sup> to 10<sup>8</sup> cells/test.

Excitation: 488 nm; Emission: 520 nm; Laser: Blue Laser.

Filtration: 0.2 µm post-manufacturing filtered.

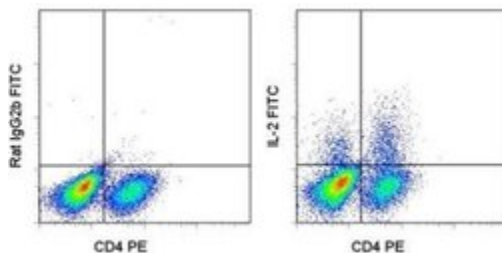
## Advanced Verification Data



### IL-2 Antibody (11-7021-82)

Intracellular staining of stimulated mouse splenocytes. As expected based on known expression patterns, IL-2 clone JES6-5H4 stains a large subset of CD4+ T cells and a minor subset of NK1.1+ NK cells with no staining observed without stimulation. Details: Mouse splenocytes were cultured in the presence of Protein Transport Inhibitors (500X) (Unstimulated, bottom row) or Cell Stimulation Cocktail (plus protein transport inhibitors, 500X) for 5 hours (Stimulated, top row). Cells were fixed and permeabilized with the IC Fixation and Permeabilization Buffer Set and protocol followed by intracellular staining with CD4 (clone RM4-5), NK1.1 (clone PK136) and IL-2 (clone JES6-5H4). Cells in the CD4+ (blue histogram) or NK1.1+ (purple histogram) gates were used for analysis. Cell treatment validation info.

## Product Images For IL-2 Monoclonal Antibody (JES6-5H4), FITC, eBioscience™



### IL-2 Antibody (11-7021-82) in Flow

Mouse splenocytes were stimulated with PMA/Ionomycin in the presence of Monensin (Product # 00-4505-51) for 5 hours. The cells were surface stained with Anti-Mouse CD3e PE (Product # 12-0031-82) and intracellularly stained with 0.25 µg of Rat IgG2b K Isotype Control FITC (Product # 11-4031-82) (left) or 0.25 µg of Anti-Mouse IL-2 FITC (right).

View more figures on [thermofisher.com](http://thermofisher.com)

## 18 References

### Flow Cytometry (15)

Journal of immunology (Baltimore, Md. : 1950)

#### Tc17, a unique subset of CD8 T cells that can protect against lethal influenza challenge.

"11-7021 was used in Flow cytometry/Cell sorting to study the role of Tc17 cells in influenza infection, showing that they protect against lethality."

Authors: Hamada H,Garcia-Hernandez Mde L,Reome JB,Misra SK,Strutt TM,McKinstry KK,Cooper AM,Swain SL,Dutton RW

**Species**  
Mouse

**Dilution**  
Not Cited

**Year**  
2009

Journal of virology

#### Single-dose protection against Plasmodium berghei by a simian adenovirus vector using a human cytomegalovirus promoter containing intron A.

"11-7021 was used in Flow cytometry/Cell sorting to compare efficacy of AdH5 and AdC6 vector vaccines expressing antigen under HCMV promotion."

Authors: Sridhar S,Reyes-Sandoval A,Draper SJ,Moore AC,Gilbert SC,Gao GP,Wilson JM,Hill AV

**Species**  
Mouse

**Dilution**  
Not Cited

**Year**  
2008

[View more Flow references on thermofisher.com](#)

### ELISA (3)

Infection and immunity

#### Modulation of pulmonary dendritic cell function during mycobacterial infection.

"Published figure using IL-2 monoclonal antibody (Product # 11-7021-82) in ELISA"

Authors: Anis MM,Fulton SA,Reba SM,Liu Y,Harding CV,Boom WH

**Species**  
Not Applicable

**Dilution**  
Not Cited

**Year**  
2008

Nature communications

#### Capicua deficiency induces autoimmunity and promotes follicular helper T cell differentiation via derepression of ETV5.

"Published figure using IL-2 monoclonal antibody (Product # 11-7021-82) in ELISA"

Authors: Park S, Lee S, Lee CG, Park GY, Hong H, Lee JS, Kim YM, Lee SB, Hwang D, Choi YS, Fryer JD, Im SH, Lee SW, Lee Y

**Species**  
Not Applicable

**Dilution**  
Not Cited

**Year**  
2017

[View more ELISA references on thermofisher.com](#)

### More applications with references on thermofisher.com

For Research Use Only. Not for use in diagnostic procedures. Not for resale without express authorization. Products are warranted to operate or perform substantially in conformance with published Product specifications in effect at the time of sale, as set forth in the Production documentation, specifications and/or accompanying package inserts ("Documentation"). No claim of suitability for use in applications regulated by FDA is made. The warranty provided herein is valid only when used by properly trained individuals. Unless otherwise stated in the Documentation, this warranty is limited to one year from date of shipment when the Product is subjected to normal, proper and intended usage. This warranty does not extend to anyone other than the Buyer. Any model or sample furnished to Buyer is merely illustrative of the general type and quality of goods and does not represent that any Product will conform to such model or sample. NO OTHER WARRANTIES, EXPRESS OR IMPLIED, ARE GRANTED INCLUDING WITHOUT LIMITATION, IMPLIED WARRANTIES OF MERCHANTABILITY, FITNESS FOR ANY PARTICULAR PURPOSE, OR NON INFRINGEMENT. BUYER'S EXCLUSIVE REMEDY FOR NON-CONFORMING PRODUCTS DURING THE WARRANTY PERIOD IS LIMITED TO REPAIR, REPLACEMENT OF OR REFUND FOR THE NON-CONFORMING PRODUCT(S) AT SELLER'S SOLE OPTION. THERE IS NO OBLIGATION TO REPAIR, REPLACE OR REFUND FOR PRODUCTS AS THE RESULT OF (I) ACCIDENT, DISASTER OR EVENT OF FORCE MAJEURE, (II) MISUSE, FAULT OR NEGLIGENCE OF OR BY BUYER, (III) USE OF THE PRODUCTS IN A MANNER FOR WHICH THEY WERE NOT DESIGNED, OR (IV) IMPROPER STORAGE AND HANDLING OF THE PRODUCTS. Unless otherwise expressly stated on the Product or in the documentation accompanying the Product, the Product is intended for research only and is not to be used for any other purpose, including without limitation, unauthorized commercial uses, in vitro diagnostic uses, ex vivo or in vivo therapeutic uses, or any type of consumption by or application to human or animals.