

IL-6 Monoclonal Antibody (MQ2-13A5), FITC, eBioscience™

Product Details	
Size	100 µg
Species Reactivity	Human
Published Species	Human
Host/Isotype	Rat / IgG1, kappa
Recommended Isotype Control	Rat IgG1 kappa Isotype Control (eBRG1), FITC, eBioscience™
Class	Monoclonal
Type	Antibody
Clone	MQ2-13A5
Conjugate	FITC
Form	Liquid
Concentration	0.5 mg/mL
Purification	Affinity chromatography
Storage buffer	PBS, pH 7.2, with 0.1% gelatin
Contains	0.09% sodium azide
Storage conditions	4° C, store in dark, DO NOT FREEZE!
RRID	AB_465397

Applications	Tested Dilution	Publications
Immunocytochemistry (ICC/IF)	-	1 Publication
Flow Cytometry (Flow)	0.5 µg/test	3 Publications
ELISA (ELISA)	-	1 Publication
T-Cell Activation (TCA)	-	1 Publication

Product Specific Information

Description: The MQ2-13A5 antibody reacts with human interleukin-6 (IL-6), a 21-28 kDa cytokine secreted by a variety of cell types.

Applications Reported: MQ2-13A5 has been reported for use in intracellular flow cytometric analysis.

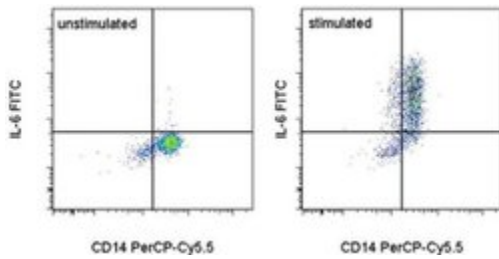
Applications Tested: This MQ2-13A5 antibody has been tested by intracellular staining and flow cytometric analysis of stimulated normal human peripheral blood cells. The FITC conjugated MQ2-13A5 is offered in 2 formats:

- µg size: This can be used at less than or equal to 0.5 µg per test. A test is defined as the amount (µg) of antibody that will stain a cell sample in a final volume of 100 µL. Cell number should be determined empirically but can range from 10⁵ to 10⁸ cells/test. It is recommended that the antibody be carefully titrated for optimal performance in the assay of interest. - test size: has been pre-titrated and tested by intracellular flow cytometric analysis of stimulated normal human peripheral blood cells. This can be used at test size: 5 µL (0.25 µg) per test. A test is defined as the amount (µg) of antibody that will stain a cell sample in a final volume of 100 µL. Cell number should be determined empirically but can range from 10⁵ to 10⁸ cells/test.

Excitation: 488 nm; Emission: 520 nm; Laser: Blue Laser.

Filtration: 0.2 µm post-manufacturing filtered.

Product Images For IL-6 Monoclonal Antibody (MQ2-13A5), FITC, eBioscience™



IL-6 Antibody (11-7069-82) in Flow

Intracellular staining of normal human peripheral blood cells unstimulated (left) or stimulated with LPS and monensin (right) with Anti-Human CD14 PerCP-Cy5-5 (Product # 45-0149-42) and Anti-Human IL-6 FITC. Cells in the monocyte gate were used for analysis.

[View more figures on thermofisher.com](https://www.thermofisher.com)

6 References

Immunocytochemistry (1)

Stem cells (Dayton, Ohio)

Mesenchymal Stromal Cell-Derived Interleukin-6 Promotes Epithelial-Mesenchymal Transition and Acquisition of Epithelial Stem-Like Cell Properties in Ameloblastoma Epithelial Cells.

"Published figure using IL-6 monoclonal antibody (Product # 11-7069-82) in Immunofluorescence"

Authors: Jiang C,Zhang Q,Shanti RM,Shi S,Chang TH,Carrasco L,Alawi F,Le AD

Species
Not Applicable

Dilution
Not Cited

Year
2017

Flow Cytometry (3)

Cancer science

Interleukin 6 regulates the expression of programmed cell death ligand 1 in thyroid cancer.

"11-7069 was used in Flow cytometry/Cell sorting to investigate the expression of IL-6 and PD-L1 in thyroid cancer, and whether IL-6 regulates the PD-L1 expression."

Authors: Zhang GQ,Jiao Q,Shen CT,Song HJ,Zhang HZ,Qiu ZL,Luo QY

Species
Human

Dilution
Not Cited

Year
2021

Proceedings of the National Academy of Sciences of the United States of America

Biallelic hypomorphic mutations in a linear deubiquitinase define otulipenia, an early-onset autoinflammatory disease.

"Published figure using IL-6 monoclonal antibody (Product # 11-7069-82) in ELISA"

Authors: Zhou Q,Yu X,Demirkaya E,Deutch N,Stone D,Tsai WL,Kuehn HS,Wang H,Yang D,Park YH,Ombrello AK,Blake M,Romeo T,Remmers EF,Chae JJ,Mullikin JC,Güzel F,Milner JD,Boehm M,Rosenzweig SD,Gadina M,Welch SB,Özen S,Topaloglu R,Abinun M,Kastner DL,Aksentijevich I

Species
Not Applicable

Dilution
Not Cited

Year
2016

[View more Flow references on thermofisher.com](#)

ELISA (1)

Proceedings of the National Academy of Sciences of the United States of America

Biallelic hypomorphic mutations in a linear deubiquitinase define otulipenia, an early-onset autoinflammatory disease.

"Published figure using IL-6 monoclonal antibody (Product # 11-7069-82) in ELISA"

Authors: Zhou Q,Yu X,Demirkaya E,Deutch N,Stone D,Tsai WL,Kuehn HS,Wang H,Yang D,Park YH,Ombrello AK,Blake M,Romeo T,Remmers EF,Chae JJ,Mullikin JC,Güzel F,Milner JD,Boehm M,Rosenzweig SD,Gadina M,Welch SB,Özen S,Topaloglu R,Abinun M,Kastner DL,Aksentijevich I

Species
Not Applicable

Dilution
Not Cited

Year
2016

More applications with references on thermofisher.com

TCA (1)

For Research Use Only. Not for use in diagnostic procedures. Not for resale without express authorization. Products are warranted to operate or perform substantially in conformance with published Product specifications in effect at the time of sale, as set forth in the Production documentation, specifications and/or accompanying package inserts ("Documentation"). No claim of suitability for use in applications regulated by FDA is made. The warranty provided herein is valid only when used by properly trained individuals. Unless otherwise stated in the Documentation, this warranty is limited to one year from date of shipment when the Product is subjected to normal, proper and intended usage. This warranty does not extend to anyone other than the Buyer. Any model or sample furnished to Buyer is merely illustrative of the general type and quality of goods and does not represent that any Product will conform to such model or sample. NO OTHER WARRANTIES, EXPRESS OR IMPLIED, ARE GRANTED INCLUDING WITHOUT LIMITATION, IMPLIED WARRANTIES OF MERCHANTABILITY, FITNESS FOR ANY PARTICULAR PURPOSE, OR NON-INFRINGEMENT. BUYER'S EXCLUSIVE REMEDY FOR NON-CONFORMING PRODUCTS DURING THE WARRANTY PERIOD IS LIMITED TO REPAIR, REPLACEMENT OF OR REFUND FOR THE NON-CONFORMING PRODUCT(S) AT SELLER'S SOLE OPTION. THERE IS NO OBLIGATION TO REPAIR, REPLACE OR REFUND FOR PRODUCTS AS THE RESULT OF (I) ACCIDENT, DISASTER OR EVENT OF FORCE MAJEURE, (II) MISUSE, FAULT OR NEGLIGENCE OF OR BY BUYER, (III) USE OF THE PRODUCTS IN A MANNER FOR WHICH THEY WERE NOT DESIGNED, OR (IV) IMPROPER STORAGE AND HANDLING OF THE PRODUCTS. Unless otherwise expressly stated on the Product or in the documentation accompanying the Product, the Product is intended for research only and is not to be used for any other purpose, including without limitation, unauthorized commercial uses, in vitro diagnostic uses, ex vivo or in vivo therapeutic uses, or any type of consumption by or application to human or animals.