

c-Met Monoclonal Antibody (eBioclone 7), FITC, eBioscience™

Product Details	
Size	100 µg
Species Reactivity	Mouse
Published Species	Mouse
Host/Isotype	Rat / IgG1, kappa
Recommended Isotype Control	Rat IgG1 kappa Isotype Control (eBRG1), FITC, eBioscience™
Class	Monoclonal
Type	Antibody
Clone	eBioclone 7
Conjugate	FITC
Excitation/Emission Max	498/517 nm
Form	Liquid
Concentration	0.5 mg/mL
Purification	Affinity chromatography
Storage buffer	PBS, pH 7.2
Contains	0.09% sodium azide
Storage conditions	4° C, store in dark, DO NOT FREEZE!
RRID	AB_494112

Applications	Tested Dilution	Publications
Flow Cytometry (Flow)	1 µg/test	4 Publications

Product Specific Information

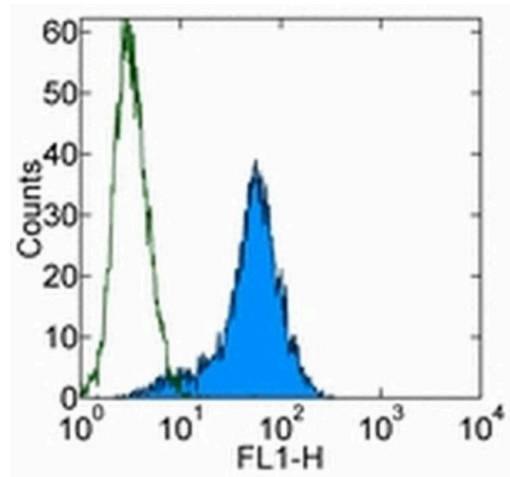
Description: The eBioclone 7 monoclonal antibody was generated against a mouse c-Met-Ig fusion protein, and reacts with mouse c-Met-transfected cells. Mouse c-Met (HGFR) is a 170 kDa receptor tyrosine kinase (RTK) expressed by epithelial cells of the brain, kidney, liver and other tissues. Binding of its ligand, Hepatocyte Growth Factor (HGF), triggers receptor autophosphorylation, and activation of several downstream effectors including the mitogen-activated protein kinases ERK-1 and ERK-2, and PLC gamma. Activation of the c-Met signal transduction pathway leads to multiple cellular responses including cell motility, scattering, proliferation, survival and angiogenesis. Mutations in human c-Met have been implicated in the development of several malignancies.

Applications Reported: This eBioclone 7 antibody has been reported for use in flow cytometric analysis.

Applications Tested: This eBioclone 7 antibody has been tested by flow cytometric analysis of mouse c-Met-transfected 293T cells. This can be used at less than or equal to 1 µg per test. A test is defined as the amount (µg) of antibody that will stain a cell sample in a final volume of 100 µL. Cell number should be determined empirically but can range from 10⁵ to 10⁸ cells /test. It is recommended that the antibody be carefully titrated for optimal performance in the assay of interest.

Excitation: 488 nm; **Emission:** 520 nm; **Laser:** Blue Laser.

Filtration: 0.2 µm post-manufacturing filtered.



c-Met Antibody (11-8854-82) in Flow
Mouse c-Met-transfected 293T cells were stained with 0.5 µg of Rat IgG1 K Isotype Control FITC (Product # 11-4301-82) (open histogram) or 0.5 µg of Anti-Mouse c-Met (HGF Receptor) FITC (filled histogram). Total viable cells were used for analysis.

[View more figures on thermofisher.com](#)

4 References

Flow Cytometry (4)

<p>International journal of oncology</p> <p>Intraperitoneal neutrophils activated by KRAS-induced ovarian cancer exert antitumor effects by modulating adaptive immunity.</p> <p>"11-8854 was used in Flow cytometry/Cell sorting to evaluate the role of increased neutrophils in cancer progression."</p> <p>Authors: Yoshida M,Taguchi A,Kawana K,Ogishima J,Adachi K,Kawata A,Nakamura H,Sato M,Fujimoto A,Inoue T, Tomio K,Mori M,Nagamatsu T,Arimoto T,Koga K,Hiraike OW,Oda K,Kiyono T,Osuga Y,Fujii T</p>	<p>Year 2018</p> <p>Species Mouse</p>
<p>Oncotarget</p> <p>Different growth and metastatic phenotypes associated with a cell-intrinsic change of Met in metastatic melanoma.</p> <p>"Published figure using c-Met monoclonal antibody (Product # 11-8854-82) in Flow Cytometry"</p> <p>Authors: Adachi E,Sakai K,Nishiuchi T,Imamura R,Sato H,Matsumoto K</p>	<p>Year 2016</p>

[View more Flow references on thermofisher.com](#)

For Research Use Only. Not for use in diagnostic procedures. Not for resale without express authorization. Products are warranted to operate or perform substantially in conformance with published Product specifications in effect at the time of sale, as set forth in the Production documentation, specifications and/or accompanying package inserts ("Documentation"). No claim of suitability for use in applications regulated by FDA is made. The warranty provided herein is valid only when used by properly trained individuals. Unless otherwise stated in the Documentation, this warranty is limited to one year from date of shipment when the Product is subjected to normal, proper and intended usage. This warranty does not extend to anyone other than the Buyer. Any model or sample furnished to Buyer is merely illustrative of the general type and quality of goods and does not represent that any Product will conform to such model or sample. NO OTHER WARRANTIES, EXPRESS OR IMPLIED, ARE GRANTED INCLUDING WITHOUT LIMITATION, IMPLIED WARRANTIES OF MERCHANTABILITY, FITNESS FOR ANY PARTICULAR PURPOSE, OR NON INFRINGEMENT. BUYER'S EXCLUSIVE REMEDY FOR NON-CONFORMING PRODUCTS DURING THE WARRANTY PERIOD IS LIMITED TO REPAIR, REPLACEMENT OF OR REFUND FOR THE NON-CONFORMING PRODUCT(S) AT SELLER'S SOLE OPTION. THERE IS NO OBLIGATION TO REPAIR, REPLACE OR REFUND FOR PRODUCTS AS THE RESULT OF (I) ACCIDENT, DISASTER OR EVENT OF FORCE MAJEURE, (II) MISUSE, FAULT OR NEGLIGENCE OF OR BY BUYER, (III) USE OF THE PRODUCTS IN A MANNER FOR WHICH THEY WERE NOT DESIGNED, OR (IV) IMPROPER STORAGE AND HANDLING OF THE PRODUCTS. Unless otherwise expressly stated on the Product or in the documentation accompanying the Product, the Product is intended for research only and is not to be used for any other purpose, including without limitation, unauthorized commercial uses, in vitro diagnostic uses, ex vivo or in vivo therapeutic uses, or any type of consumption by or application to human or animals.