

CD282 (TLR2) Monoclonal Antibody (6C2), FITC, eBioscience™

Product Details	
Size	100 µg
Species Reactivity	Mouse
Published Species	Mouse
Host/Isotope	Rat / IgG2b, kappa
Recommended Isotype Control	Rat IgG2b kappa Isotype Control (eB149/10H5), FITC, eBioscience™
Class	Monoclonal
Type	Antibody
Clone	6C2
Conjugate	FITC
Form	Liquid
Concentration	0.5 mg/mL
Purification	Affinity chromatography
Storage buffer	PBS, pH 7.2, with 0.1% gelatin
Contains	0.09% sodium azide
Storage Conditions	4° C, store in dark, DO NOT FREEZE!
RRID	AB_465440

Applications	Tested Dilution	Publications
Flow Cytometry (Flow)	1 µg/test	14 Publications
Immunofluorescence (IF)	-	1 Publication
Immunohistochemistry (IHC)	-	2 Publications

Product Specific Information

Description: The 6C2 monoclonal antibody reacts with mouse Toll-like receptor 2 (TLR2). Mouse TLR2 is expressed by the myeloid lineage, including macrophage and dendritic cells in splenocytes and the RAW264.7 cell line. To date, at least twelve members of the Toll family have been identified in human and mouse. This family of type I transmembrane proteins is characterized by an extracellular domain with leucine-rich repeats and a cytoplasmic domain with homology to the type I IL-1 receptor. Two of these receptors, TLR2 and TLR4, are pattern recognition receptors and signaling molecules in response to bacterial lipoproteins and have been implicated in innate immunity and inflammation. TLR2 is expressed on the surface of cells and is responsible for distinguishing different pathogens.

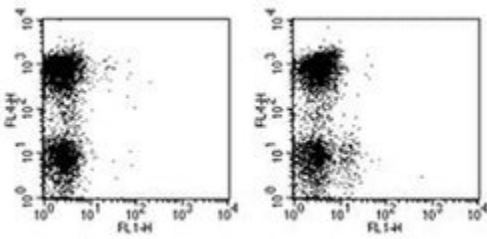
Applications Reported: 6C2 has been reported for use in flow cytometric analysis. For optimal flow cytometry staining with this antibody, it is recommended that a directly conjugated 6C2 (FITC, PE, or Biotin) be used in combination with FcR blocking with anti-mouse CD16/CD32 (clone 93, cat. 14-0161).

Applications Tested: The 6C2 antibody has been tested by flow cytometric analysis of mouse splenocytes. This can be used at less than or equal to 1 µg per test. A test is defined as the amount (µg) of antibody that will stain a cell sample in a final volume of 100 µL. Cell number should be determined empirically but can range from 10⁵ to 10⁸ cells/test. It is recommended that the antibody be carefully titrated for optimal performance in the assay of interest.

Excitation: 488 nm; Emission: 520 nm; Laser: Blue Laser.

Filtration: 0.2 µm post-manufacturing filtered.

Product Images For CD282 (TLR2) Monoclonal Antibody (6C2), FITC, eBioscience™



CD282 (TLR2) Antibody (11-9021-82) in Flow

BALB/c splenocytes were pre-incubated with Anti-Mouse CD16/CD32 Purified (Product # 14-0161-82) and then stained with Anti-Human/Mouse CD45R (B220) APC (Product # 17-0452-82) and 0.5 µg of Rat IgG2b kappa Isotype Control FITC (Product # 11-4031-82) (left) or 0.5 µg of Anti-Mouse CD282 (TLR2) FITC (right). Total viable cells were used for analysis.

[View more figures on thermofisher.com](http://thermofisher.com)

17 References

Flow Cytometry (14)

Frontiers in pharmacology

Traditional Herbal Medicine-Derived Sulforaphene LFS-01 Reverses Colitis in Mice by Selectively Altering the Gut Microbiota and Promoting Intestinal Gamma-Delta T Cells.

"Published figure using CD282 (TLR2) monoclonal antibody (Product # 11-9021-82) in Flow Cytometry"

Authors: Li M,Gao J,Tang Y,Liu M,Wu S,Qu K,Long X,Li H,Liu M,Liu Y,Yuan J,Mao L,Liu Y,Zheng X,Wang E,Wang J, Yang Y

Species
Not Applicable

Dilution
Not Cited

Year
2020

Scientific reports

CD14 is critical for TLR2-mediated M1 macrophage activation triggered by N-glycan recognition.

"11-9021 was used in Flow cytometry/Cell sorting to show that CD14 is critical for ArtinM-induced macrophage activation in mice."

Authors: da Silva TA,Zorzetto-Fernandes ALV,Cecílio NT,Sardinha-Silva A,Fernandes FF,Roque-Barreira MC

Species
Mouse

Dilution
Not Cited

Year
2017

[View more Flow references on thermofisher.com](#)

Immunohistochemistry (2)

Journal of immunology (Baltimore, Md. : 1950)

Protective role for TLR4 signaling in atherosclerosis progression as revealed by infection with a common oral pathogen.

"Published figure using CD282 (TLR2) monoclonal antibody (Product # 11-9021-82) in Immunohistochemistry"

Authors: Hayashi C,Papadopoulos G,Gudino CV,Weinberg EO,Barth KR,Madrigan AG,Chen Y,Ning H,LaValley M, Gibson FC,Hamilton JA,Genco CA

Species
Not Applicable

Dilution
Not Cited

Year
2012

Arthritis research and therapy

TLR2 modulates inflammation in zymosan-induced arthritis in mice.

"Published figure using CD282 (TLR2) monoclonal antibody (Product # 11-9021-82) in Immunohistochemistry"

Authors: Frasnelli ME,Tarussio D,Chobaz-Péclat V,Busso N,So A

Species
Not Applicable

Dilution
Not Cited

Year
2005

More applications with references on thermofisher.com

IF (1)

For Research Use Only. Not for use in diagnostic procedures. Not for resale without express authorization. Products are warranted to operate or perform substantially in conformance with published Product specifications in effect at the time of sale, as set forth in the Production documentation, specifications and/or accompanying package inserts ("Documentation"). No claim of suitability for use in applications regulated by FDA is made. The warranty provided herein is valid only when used by properly trained individuals. Unless otherwise stated in the Documentation, this warranty is limited to one year from date of shipment when the Product is subjected to normal, proper and intended usage. This warranty does not extend to anyone other than the Buyer. Any model or sample furnished to Buyer is merely illustrative of the general type and quality of goods and does not represent that any Product will conform to such model or sample. NO OTHER WARRANTIES, EXPRESS OR IMPLIED, ARE GRANTED INCLUDING WITHOUT LIMITATION, IMPLIED WARRANTIES OF MERCHANTABILITY, FITNESS FOR ANY PARTICULAR PURPOSE, OR NON INFRINGEMENT. BUYER'S EXCLUSIVE REMEDY FOR NON-CONFORMING PRODUCTS DURING THE WARRANTY PERIOD IS LIMITED TO REPAIR, REPLACEMENT OF OR REFUND FOR THE NON-CONFORMING PRODUCT(S) AT SELLER'S SOLE OPTION. THERE IS NO OBLIGATION TO REPAIR, REPLACE OR REFUND FOR PRODUCTS AS THE RESULT OF (I) ACCIDENT, DISASTER OR EVENT OF FORCE MAJEURE, (II) MISUSE, FAULT OR NEGLIGENCE OF OR BY BUYER, (III) USE OF THE PRODUCTS IN A MANNER FOR WHICH THEY WERE NOT DESIGNED, OR (IV) IMPROPER STORAGE AND HANDLING OF THE PRODUCTS. Unless otherwise expressly stated on the Product or in the documentation accompanying the Product, the Product is intended for research only and is not to be used for any other purpose, including without limitation, unauthorized commercial uses, in vitro diagnostic uses, ex vivo or in vivo therapeutic uses, or any type of consumption by or application to human or animals.