

# CD282 (TLR2) Monoclonal Antibody (TL2.1), FITC, eBioscience™

## Product Details

Size	100 Tests
Species Reactivity	Human
Published Species	Human, Mouse
Host/Isotope	Mouse / IgG2a, kappa
Recommended Isotype Control	Mouse IgG2a kappa Isotype Control (eBM2a), FITC, eBioscience™
Class	Monoclonal
Type	Antibody
Clone	TL2.1
Conjugate	FITC
Form	Liquid
Concentration	5 µL/Test
Purification	Affinity chromatography
Storage buffer	PBS, pH 7.2, with 0.1% gelatin, 0.2% BSA
Contains	0.09% sodium azide
Storage Conditions	4° C, store in dark, DO NOT FREEZE!
RRID	AB_11042717

Applications	Tested	Dilution	Published
Flow Cytometry (Flow)	✓	5 µL (1 µg)/test	17 Publications
Immunofluorescence (IF)	-		1 Publication
Miscellaneous PubMed (MISC)	-		2 Publications
Functional Assay (FN)	-		5 Publications
Immunohistochemistry (Frozen) (IHC (F))	-		2 Publications
Western Blot (WB)	-		1 Publication
Immunohistochemistry (Paraffin) (IHC (P))	-		2 Publications

## Product Specific Information

Description: The TL2.1 monoclonal antibody reacts with human Toll-like receptor 2 (TLR2). To date, at least ten members of the Toll family have been identified in human. This family of type I transmembrane proteins is characterized by an extracellular domain with leucine-rich repeats and a cytoplasmic domain with homology to the type I IL-1 receptor. Two of these receptors, TLR2 and TLR4, are pattern recognition receptors and signaling molecules in response to bacterial lipoproteins and have been implicated in innate immunity and inflammation. TLR2 is expressed by peripheral blood monocytes and is responsible for distinguishing different pathogens. TL2.1, a blocking antibody, has been used to study the role of TLR-2 as a pattern recognition receptor in microbial lipoprotein/lipopeptide induced cytokine production from human peripheral blood mononuclear cells. TL2.1 has been reported to immunoprecipitate human TLR2 (~90 kDa) from PBMC and HMEC.

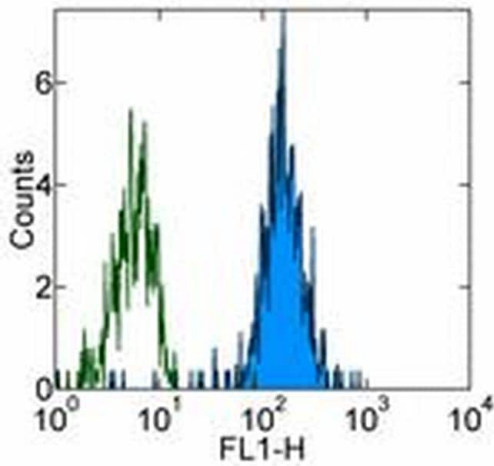
Applications Reported: The TL2.1 antibody has been reported for use in flow cytometric analysis.

Applications Tested: This TL2.1 antibody has been pre-titrated and tested by flow cytometric analysis of normal human peripheral blood cells. This can be used at 5  $\mu\text{L}$  (1  $\mu\text{g}$ ) per test. A test is defined as the amount ( $\mu\text{g}$ ) of antibody that will stain a cell sample in a final volume of 100  $\mu\text{L}$ . Cell number should be determined empirically but can range from  $10^5$  to  $10^8$  cells/test.

Excitation: 488 nm; Emission: 520 nm; Laser: Blue Laser.

Filtration: 0.2  $\mu\text{m}$  post-manufacturing filtered.

### Product Images For CD282 (TLR2) Monoclonal Antibody (TL2.1), FITC, eBioscience™



#### CD282 (TLR2) Antibody (11-9922-42) in Flow

Normal human peripheral blood cells were stained with Mouse IgG2a K Isotype Control FITC (Product # 11-4724-42) (open histogram) or Anti-Human CD282 (TLR2) FITC (filled histogram). Cells in the monocyte gate were used for analysis.

## 30 References

### Flow Cytometry (17)

#### Molecular medicine reports

#### **n-butanol extract from Folium isatidis inhibits the lipopolysaccharide-induced downregulation of CXCR1 and CXCR2 on human neutrophils.**

"Published figure using CD282 (TLR2) monoclonal antibody (Product # 11-9922-42) in Flow Cytometry"

Authors: Wu B,Wang L,Jiang L,Dong L,Xu F,Lu Y,Jin J,Wang Z,Liang G,Shan X

**Species**  
Not Applicable

**Dilution**  
Not Cited

**Year**  
2018

#### PloS one

#### **Toll-Like Receptor 1/2 and 5 Ligands Enhance the Expression of Cyclin D1 and D3 and Induce Proliferation in Mantle Cell Lymphoma.**

"11-9922 was used in Flow cytometry/Cell sorting to investigate the contribution of Toll-like receptor 1/2 and 5 to the development of mantle cell lymphoma."

Authors: Mastorci K,Muraro E,Pasini E,Furlan C,Sigalotti L,Cinco M,Dolcetti R,Fratta E

**Species**  
Human

**Dilution**  
Not Cited

**Year**  
2017

[View more Flow references on thermofisher.com](#)

### Immunofluorescence (1)

#### Veterinary immunology and immunopathology

#### **Antibodies specific for human or murine Toll-like receptors detect canine leukocytes by flow cytometry.**

Authors: Burgener IA,Jungi TW

**Species**  
Not Applicable

**Dilution**  
Not Cited

**Year**  
2008

### Miscellaneous PubMed (2)

#### Veterinary immunology and immunopathology

#### **Antibodies specific for human or murine Toll-like receptors detect canine leukocytes by flow cytometry.**

Authors: Burgener IA,Jungi TW

**Species**  
Not Applicable

**Dilution**  
Not Cited

**Year**  
2008

### More applications with references on thermofisher.com

**FN (5)** **IHC (F) (2)** **WB (1)** **IHC (P) (2)**

For Research Use Only. Not for use in diagnostic procedures. Not for resale without express authorization. Products are warranted to operate or perform substantially in conformance with published Product specifications in effect at the time of sale, as set forth in the Production documentation, specifications and/or accompanying package inserts ("Documentation"). No claim of suitability for use in applications regulated by FDA is made. The warranty provided herein is valid only when used by properly trained individuals. Unless otherwise stated in the Documentation, this warranty is limited to one year from date of shipment when the Product is subjected to normal, proper and intended usage. This warranty does not extend to anyone other than the Buyer. Any model or sample furnished to Buyer is merely illustrative of the general type and quality of goods and does not represent that any Product will conform to such model or sample. NO OTHER WARRANTIES, EXPRESS OR IMPLIED, ARE GRANTED INCLUDING WITHOUT LIMITATION, IMPLIED WARRANTIES OF MERCHANTABILITY, FITNESS FOR ANY PARTICULAR PURPOSE, OR NON-INFRINGEMENT. BUYER'S EXCLUSIVE REMEDY FOR NON-CONFORMING PRODUCTS DURING THE WARRANTY PERIOD IS LIMITED TO REPAIR, REPLACEMENT OF OR REFUND FOR THE NON-CONFORMING PRODUCT(S) AT SELLER'S SOLE OPTION. THERE IS NO OBLIGATION TO REPAIR, REPLACE OR REFUND FOR PRODUCTS AS THE RESULT OF (I) ACCIDENT, DISASTER OR EVENT OF FORCE MAJEURE, (II) MISUSE, FAULT OR NEGLIGENCE OF OR BY BUYER, (III) USE OF THE PRODUCTS IN A MANNER FOR WHICH THEY WERE NOT DESIGNED, OR (IV) IMPROPER STORAGE AND HANDLING OF THE PRODUCTS. Unless otherwise expressly stated on the Product or in the documentation accompanying the Product, the Product is intended for research only and is not to be used for any other purpose, including without limitation, unauthorized commercial uses, in vitro diagnostic uses, ex vivo or in vivo therapeutic uses, or any type of consumption by or application to human or animals.