

HLA-ABC Monoclonal Antibody (W6/32), FITC, eBioscience™

Product Details	
Size	100 Tests
Species Reactivity	Human
Published Species	Human, Rhesus monkey
Host/Isotype	Mouse / IgG2a, kappa
Recommended Isotype Control	Mouse IgG2a kappa Isotype Control (eBM2a), FITC, eBioscience™
Class	Monoclonal
Type	Antibody
Clone	W6/32
Conjugate	FITC
Form	Liquid
Concentration	5 µL/Test
Purification	Affinity chromatography
Storage buffer	PBS, pH 7.2, with 0.1% gelatin, 0.2% BSA
Contains	0.09% sodium azide
Storage conditions	4° C, store in dark, DO NOT FREEZE!
RRID	AB_1633402

Applications	Tested Dilution	Publications
Immunohistochemistry (Frozen) (IHC (F))	-	2 Publications
Immunocytochemistry (ICC/IF)	5 µg/mL	2 Publications
Flow Cytometry (Flow)	5 µL (1 µg)/test	28 Publications
Neutralization (Neu)	-	1 Publication

Product Specific Information

Description: The W6/32 monoclonal antibody reacts with the human major histocompatibility complex (MHC) class I, HLA-A, B, C. MHC class I antigens associated with beta 2-microglobulin are expressed by all human nucleated cells and are central in cell-mediated immune response and tumor surveillance. W6/32 mAb recognizes a non-polymorphic epitope shared among products of the HLA-A, B, and C loci and immunoprecipitates both 43 kDa and 11-12 kDa chains. Crossreactivity is also seen in baboon, rhesus and cynomolgus monkey.

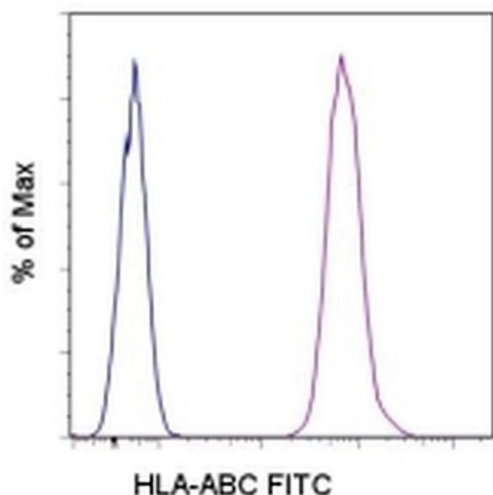
Applications Reported: The W6/32 antibody has been reported for use in flow cytometric analysis.

Applications Tested: This W6/32 antibody has been pre-titrated and tested by flow cytometric analysis of normal human peripheral blood cells. This can be used at 5 µL (1 µg) per test. A test is defined as the amount (µg) of antibody that will stain a cell sample in a final volume of 100 µL. Cell number should be determined empirically but can range from 10⁵ to 10⁸ cells/test.

Excitation: 488 nm; Emission: 520 nm; Laser: Blue Laser.

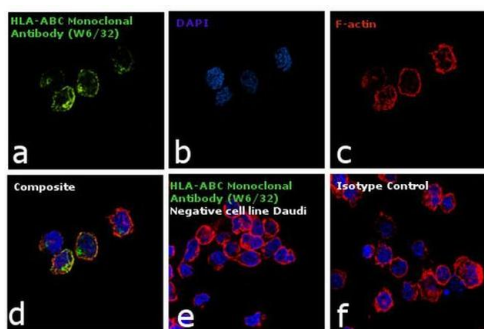
Filtration: 0.2 µm post-manufacturing filtered.

Product Images For HLA-ABC Monoclonal Antibody (W6/32), FITC, eBioscience™



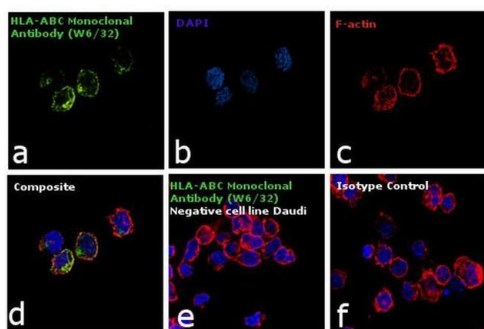
HLA-ABC Antibody (11-9983-42) in Flow

Staining of normal human peripheral blood cells with Mouse IgG2a K Isotype Control FITC (Product # 11-4724-42) (blue histogram) or Anti-Human HLA-ABC FITC (purple histogram). Cells in the lymphocyte gate were used for analysis.



HLA-ABC Antibody (11-9983-42)

Antibody specificity was demonstrated by detection of differential basal expression of the target across cell models owing to their inherent genetic constitution. Relative expression of HLA-ABC was observed in Raji when compared to Daudi using product (Product # 11-9983-41) in Immunocytochemistry. {RE}



HLA-ABC Antibody (11-9983-42) in ICC/IF

Immunofluorescence analysis of HLA-ABC was performed using 70% confluent log phase Raji (B-cell lineage) cells. The cells were fixed with 4% paraformaldehyde for 10 minutes, permeabilized with 0.1% Triton™ X-100 for 15 minutes, and blocked with 1% BSA for 1 hour at room temperature. The cells were labeled with HLA-ABC Monoclonal Antibody (W6/32), FITC, eBioscience™ (Product # 11-9983-41) at 5 µg/mL in 0.1% BSA, incubated at 4 degree Celsius overnight (Panel a: green). Nuclei (Panel b: blue) were stained with SlowFade® Gold Antifade Mountant with DAPI (Product # S36938). F-actin (Panel c: red) was stained with Rhodamine Phalloidin (Product # R415, 1:300). Panel d represents the merged image showing plasma membrane localization. Panel e represents negative control, Daudi cells. Panel f represents isotype control cells to assess background. The images were captured at 60X magnification.

View more figures on thermofisher.com

Immunohistochemistry (Frozen) (2)

Human immunology

High level of aneuploidy of chromosome 6 by FISH analysis of head and neck squamous cell carcinoma: limited applicability of LOH analysis to define HLA loss.

Authors: Koene GJ,Arts-Hilkes YH,van Dijk AJ,van der Ven KJ,Slotweg PJ,de Weger RA,Tilanus MG

Species
Not Applicable

Dilution
Not Cited

Year
2004

American journal of obstetrics and gynecology

A study of human leukocyte antigen G expression in hydatidiform moles.

Authors: Goldman-Wohl D,Ariel I,Greenfield C,Hochner-Celnikier D,Lavy Y,Yagel S

Species
Not Applicable

Dilution
Not Cited

Year
2001

Immunocytochemistry (2)

Virology

Mamu-A01/K(b) transgenic and MHC Class I knockout mice as a tool for HIV vaccine development.

"11-9983 was used in Flow cytometry/Cell sorting to develop the Mamu-A01/K(b) Tg mice, which provide a model system to study the Mamu-A01 restricted T-cell response."

Authors: Li J,Srivastava T,Rawal R,Manuel E,Isbell D,Tsark W,La Rosa C,Wang Z,Li Z,Barry PA,Hagen KD,Longmate J,Diamond DJ

Species
Rhesus monkey

Dilution
Not Cited

Year
2009

Nature immunology

Direct proteasome-independent cross-presentation of viral antigen by plasmacytoid dendritic cells on major histocompatibility complex class I.

"11-9983 was used in Flow cytometry/Cell sorting to demonstrate that pDCs use 'ready made' stores of MHC class I to rapidly present exogenous antigen to CD8+ T cells."

Authors: Di Pucchio T,Chatterjee B,Smed-Sørensen A,Clayton S,Palazzo A,Montes M,Xue Y,Mellman I,Banchereau J,Connolly JE

Species
Human

Dilution
Not Cited

Year
2008

More applications with references on thermofisher.com

Flow (28)

Neu (1)

For Research Use Only. Not for use in diagnostic procedures. Not for resale without express authorization. Products are warranted to operate or perform substantially in conformance with published Product specifications in effect at the time of sale, as set forth in the Production documentation, specifications and/or accompanying package inserts ("Documentation"). No claim of suitability for use in applications regulated by FDA is made. The warranty provided herein is valid only when used by properly trained individuals. Unless otherwise stated in the Documentation, this warranty is limited to one year from date of shipment when the Product is subjected to normal, proper and intended usage. This warranty does not extend to anyone other than the Buyer. Any model or sample furnished to Buyer is merely illustrative of the general type and quality of goods and does not represent that any Product will conform to such model or sample. NO OTHER WARRANTIES, EXPRESS OR IMPLIED, ARE GRANTED INCLUDING WITHOUT LIMITATION, IMPLIED WARRANTIES OF MERCHANTABILITY, FITNESS FOR ANY PARTICULAR PURPOSE, OR NON INFRINGEMENT. BUYER'S EXCLUSIVE REMEDY FOR NON-CONFORMING PRODUCTS DURING THE WARRANTY PERIOD IS LIMITED TO REPAIR, REPLACEMENT OF OR REFUND FOR THE NON-CONFORMING PRODUCT(S) AT SELLER'S SOLE OPTION. THERE IS NO OBLIGATION TO REPAIR, REPLACE OR REFUND FOR PRODUCTS AS THE RESULT OF (I) ACCIDENT, DISASTER OR EVENT OF FORCE MAJEURE, (II) MISUSE, FAULT OR NEGLIGENCE OF OR BY BUYER, (III) USE OF THE PRODUCTS IN A MANNER FOR WHICH THEY WERE NOT DESIGNED, OR (IV) IMPROPER STORAGE AND HANDLING OF THE PRODUCTS. Unless otherwise expressly stated on the Product or in the documentation accompanying the Product, the Product is intended for research only and is not to be used for any other purpose, including without limitation, unauthorized commercial uses, in vitro diagnostic uses, ex vivo or in vivo therapeutic uses, or any type of consumption by or application to human or animals.