

# CD4 Monoclonal Antibody (OKT4 (OKT-4)), PE, eBioscience™

## Product Details

Size	100 Tests
Species Reactivity	Human
Published Species	Human, Rhesus monkey
Host/Isotope	Mouse / IgG2b, kappa
Recommended Isotype Control	Mouse IgG2b kappa Isotype Control (eBMG2b), PE, eBioscience™
Class	Monoclonal
Type	Antibody
Clone	OKT4 (OKT-4)
Conjugate	PE
Form	Liquid
Concentration	5 µL/Test
Purification	Affinity chromatography
Storage buffer	PBS, pH 7.2, with 0.1% gelatin, 0.2% BSA
Contains	0.09% sodium azide
Storage Conditions	4° C, store in dark, DO NOT FREEZE!
RRID	AB_2016675

Applications	Tested	Dilution	Published
Flow Cytometry (Flow)	✓	5 µL (0.06 µg)/test	12 Publications

## Product Specific Information

**Description:** The OKT4 monoclonal antibody reacts with human CD4, a 59 kDa cell surface glycoprotein expressed by the majority of thymocytes, a subpopulation of mature T cells (T-helper cells) and in low levels on monocytes. CD4 is a receptor for the human immunodeficiency virus (HIV). The OKT4 antibody recognizes a different epitope than the RPA-T4 monoclonal antibody, and these antibodies do not cross-block binding to each other's respective epitopes.

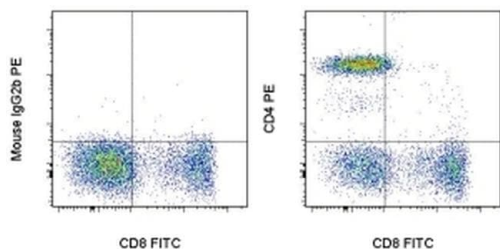
**Applications Reported:** This OKT4 (OKT-4) antibody has been reported for use in flow cytometric analysis.

**Applications Tested:** This OKT4 (OKT-4) antibody has been pre-titrated and tested by flow cytometric analysis of normal human peripheral blood cells. This can be used at 5 µL (0.06 µg) per test. A test is defined as the amount (µg) of antibody that will stain a cell sample in a final volume of 100 µL. Cell number should be determined empirically but can range from 10<sup>5</sup> to 10<sup>8</sup> cells/test.

**Excitation:** 488-561 nm; **Emission:** 578 nm; **Laser:** Blue Laser, Green Laser, Yellow-Green Laser.

**Filtration:** 0.2 µm post-manufacturing filtered.

## Product Images For CD4 Monoclonal Antibody (OKT4 (OKT-4)), PE, eBioscience™



### CD4 Antibody (12-0048-42) in Flow

Staining of normal human peripheral blood cells with Anti-Human CD8a FITC (Product # 11-0088-42) and Mouse IgG2b K Isotype Control PE (Product # 12-4732-81) (left) or Anti-Human CD4 PE (right). Cells in the lymphocyte gate were used for analysis.

[View more figures on thermofisher.com](#)

## 12 References

### Flow Cytometry (12)

#### Nature communications

#### Complement receptor CD46 co-stimulates optimal human CD8<sup>+</sup> T cell effector function via fatty acid metabolism.

"Published figure using CD4 monoclonal antibody (Product # 12-0048-42) in Flow Cytometry"

Authors: Arbore G, West EE, Rahman J, Le Friec G, Niyonzima N, Pirooznia M, Tunc I, Pavlidis P, Powell N, Li Y, Liu P, Servais A, Couzi L, Fremeaux-Bacchi V, Placais L, Ferraro A, Walsh PR, Kavanagh D, Afzali B, Lavender P, Lachmann HJ, Kemper C

#### Species

Not Applicable

#### Dilution

Not Cited

#### Year

2018

#### Oncology letters

#### Accumulation of T-helper 22 cells, interleukin-22 and myeloid-derived suppressor cells promotes gastric cancer progression in elderly patients.

"Published figure using CD4 monoclonal antibody (Product # 12-0048-42) in Flow Cytometry"

Authors: Chen X, Wang Y, Wang J, Wen J, Jia X, Wang X, Zhang H

#### Species

Not Applicable

#### Dilution

Not Cited

#### Year

2018

[View more Flow references on thermofisher.com](#)

## More applications with references on thermofisher.com

For Research Use Only. Not for use in diagnostic procedures. Not for resale without express authorization. Products are warranted to operate or perform substantially in conformance with published Product specifications in effect at the time of sale, as set forth in the Production documentation, specifications and/or accompanying package inserts ("Documentation"). No claim of suitability for use in applications regulated by FDA is made. The warranty provided herein is valid only when used by properly trained individuals. Unless otherwise stated in the Documentation, this warranty is limited to one year from date of shipment when the Product is subjected to normal, proper and intended usage. This warranty does not extend to anyone other than the Buyer. Any model or sample furnished to Buyer is merely illustrative of the general type and quality of goods and does not represent that any Product will conform to such model or sample. NO OTHER WARRANTIES, EXPRESS OR IMPLIED, ARE GRANTED INCLUDING WITHOUT LIMITATION, IMPLIED WARRANTIES OF MERCHANTABILITY, FITNESS FOR ANY PARTICULAR PURPOSE, OR NON INFRINGEMENT. BUYER'S EXCLUSIVE REMEDY FOR NON-CONFORMING PRODUCTS DURING THE WARRANTY PERIOD IS LIMITED TO REPAIR, REPLACEMENT OF OR REFUND FOR THE NON-CONFORMING PRODUCT(S) AT SELLER'S SOLE OPTION. THERE IS NO OBLIGATION TO REPAIR, REPLACE OR REFUND FOR PRODUCTS AS THE RESULT OF (I) ACCIDENT, DISASTER OR EVENT OF FORCE MAJEURE, (II) MISUSE, FAULT OR NEGLIGENCE OF OR BY BUYER, (III) USE OF THE PRODUCTS IN A MANNER FOR WHICH THEY WERE NOT DESIGNED, OR (IV) IMPROPER STORAGE AND HANDLING OF THE PRODUCTS. Unless otherwise expressly stated on the Product or in the documentation accompanying the Product, the Product is intended for research only and is not to be used for any other purpose, including without limitation, unauthorized commercial uses, in vitro diagnostic uses, ex vivo or in vivo therapeutic uses, or any type of consumption by or application to human or animals.