

# CD5 Monoclonal Antibody (UCHT2), PE, eBioscience™

Product Details	
Size	100 Tests
Species Reactivity	Human
Published Species	Human
Host/Isotype	Mouse / IgG1, kappa
Recommended Isotype Control	Mouse IgG1 kappa Isotype Control (P3.6.2.8.1), PE, eBioscience™
Class	Monoclonal
Type	Antibody
Clone	UCHT2
Conjugate	PE
Excitation/Emission Max	565/576 nm
Form	Liquid
Concentration	5 µL/Test
Purification	Affinity chromatography
Storage buffer	PBS, pH 7.2, with 0.2% BSA
Contains	0.09% sodium azide
Storage conditions	4° C, store in dark, DO NOT FREEZE!
RRID	AB_1548712

Applications	Tested Dilution	Publications
Immunohistochemistry (Frozen) (IHC (F))	-	1 Publication
Flow Cytometry (Flow)	5 µL (0.5 µg)/test	5 Publications

## Product Specific Information

**Description:** The UCHT2 monoclonal antibody reacts with human CD5, a 67 kDa protein expressed by a majority of thymocytes and mature T cells and a subset of B cells. Signaling through the CD5 molecule activates T cells and binding of CD5 to its ligand on B cells, CD72, and plays an important role in T-B interaction and proliferation.

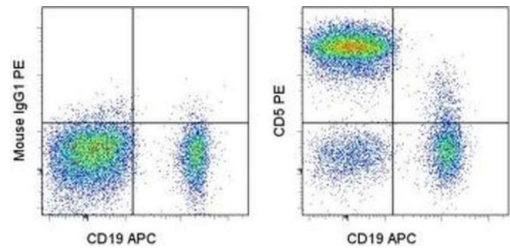
The monoclonal antibody UCHT2 recognizes primate CD5.

**Applications Reported:** The UCHT2 antibody has been reported for use in flow cytometric analysis.

**Applications Tested:** The UCHT2 antibody has been pre-titrated and tested by flow cytometric analysis of normal human peripheral blood cells. This can be used at 5 µL (0.5 µg) per test. A test is defined as the amount (µg) of antibody that will stain a cell sample in a final volume of 100 µL. Cell number should be determined empirically but can range from 10<sup>5</sup> to 10<sup>8</sup> cells /test.

**Excitation:** 488-561 nm; **Emission:** 578 nm; **Laser:** Blue Laser, Green Laser, Yellow-Green Laser.

**Filtration:** 0.2 µm post-manufacturing filtered.



**CD5 Antibody (12-0059-42) in Flow**  
Staining of normal human peripheral blood cells with APC Anti-Human CD19 (Product # 17-0199-42) and Mouse IgG1 kappa Isotype Control PE (Product # 12-4714-81) (left) or Anti-Human CD5 PE (right). Cells in the lymphocyte gate were used for analysis.

6 References

Immunohistochemistry (Frozen) (1)

<p>The journal of histochemistry and cytochemistry : official journal of the Histochemistry Society</p> <p><b>A monoclonal antibody selection for immunohistochemical examination of lymphoid tissues from non-human primates.</b></p> <p>Authors: Kap YS,van Meurs M,van Driel N,Koopman G,Melief MJ,Brok HP,Laman JD,'t Hart BA</p>	<p>Year</p> <p>2009</p>
---	-------------------------

Flow Cytometry (5)

<p>Stem cell reports</p> <p><b>Targeted Disruption of TCF12 Reveals HEB as Essential in Human Mesodermal Specification and Hematopoiesis.</b></p> <p>"Published figure using CD5 monoclonal antibody (Product # 12-0059-42) in Flow Cytometry"</p> <p>Authors: Li Y,Brauer PM,Singh J,Xhiku S,Yoganathan K,Zúñiga-Pflücker JC,Anderson MK</p>	<p>Year</p> <p>2017</p>
<p>Oncotarget</p> <p><b>Dual SYK/JAK inhibition overcomes ibrutinib resistance in chronic lymphocytic leukemia: Cerdulatinib, but not ibrutinib, induces apoptosis of tumor cells protected by the microenvironment.</b></p> <p>"12-0059 was used in Flow cytometry/Cell sorting to show that simultaneous targeting of BCR and JAK-STAT pathways is a more effective strategy relative to single BTK inhibition."</p> <p>Authors: Guo A,Lu P,Coffey G,Conley P,Pandey A,Wang YL</p>	<p>Year</p> <p>2017</p> <p>Species</p> <p>Human</p>

[View more Flow references on thermofisher.com](#)

More applications with references on thermofisher.com

For Research Use Only. Not for use in diagnostic procedures. Not for resale without express authorization. Products are warranted to operate or perform substantially in conformance with published Product specifications in effect at the time of sale, as set forth in the Production documentation, specifications and/or accompanying package inserts ("Documentation"). No claim of suitability for use in applications regulated by FDA is made. The warranty provided herein is valid only when used by properly trained individuals. Unless otherwise stated in the Documentation, this warranty is limited to one year from date of shipment when the Product is subjected to normal, proper and intended usage. This warranty does not extend to anyone other than the Buyer. Any model or sample furnished to Buyer is merely illustrative of the general type and quality of goods and does not represent that any Product will conform to such model or sample. NO OTHER WARRANTIES, EXPRESS OR IMPLIED, ARE GRANTED INCLUDING WITHOUT LIMITATION, IMPLIED WARRANTIES OF MERCHANTABILITY, FITNESS FOR ANY PARTICULAR PURPOSE, OR NON INFRINGEMENT. BUYER'S EXCLUSIVE REMEDY FOR NON-CONFORMING PRODUCTS DURING THE WARRANTY PERIOD IS LIMITED TO REPAIR, REPLACEMENT OF OR REFUND FOR THE NON-CONFORMING PRODUCT(S) AT SELLER'S SOLE OPTION. THERE IS NO OBLIGATION TO REPAIR, REPLACE OR REFUND FOR PRODUCTS AS THE RESULT OF (I) ACCIDENT, DISASTER OR EVENT OF FORCE MAJEURE, (II) MISUSE, FAULT OR NEGLIGENCE OF OR BY BUYER, (III) USE OF THE PRODUCTS IN A MANNER FOR WHICH THEY WERE NOT DESIGNED, OR (IV) IMPROPER STORAGE AND HANDLING OF THE PRODUCTS. Unless otherwise expressly stated on the Product or in the documentation accompanying the Product, the Product is intended for research only and is not to be used for any other purpose, including without limitation, unauthorized commercial uses, in vitro diagnostic uses, ex vivo or in vivo therapeutic uses, or any type of consumption by or application to human or animals.