

CD24 Monoclonal Antibody (eBioSN3 (SN3 A5-2H10)), PE, eBioscience™

| Product Details | |
|-----------------------------|---|
| Size | 100 Tests |
| Species Reactivity | Human |
| Published Species | Human, Mouse |
| Host/Isotope | Mouse / IgG1, kappa |
| Recommended Isotype Control | Mouse IgG1 kappa Isotype Control (P3.6.2.8.1), PE, eBioscience™ |
| Class | Monoclonal |
| Type | Antibody |
| Clone | eBioSN3 (SN3 A5-2H10) |
| Conjugate | PE |
| Form | Liquid |
| Concentration | 5 µL/Test |
| Purification | Affinity chromatography |
| Storage buffer | PBS, pH 7.2, with 0.1% gelatin, 0.2% BSA |
| Contains | 0.09% sodium azide |
| Storage Conditions | 4° C, store in dark, DO NOT FREEZE! |
| RRID | AB_1548678 |

| Applications | Tested Dilution | Publications |
|-----------------------|---------------------|-----------------|
| Flow Cytometry (Flow) | 5 µL (0.25 µg)/test | 17 Publications |

Product Specific Information

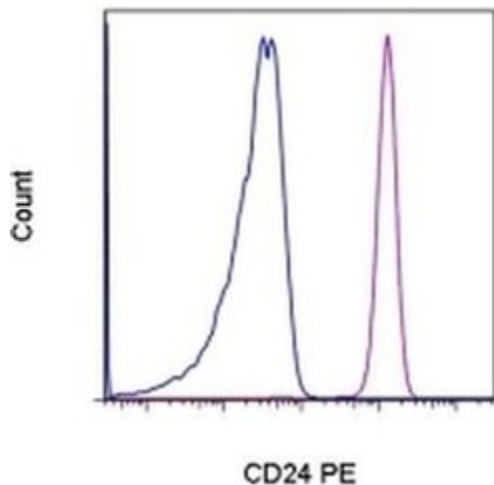
Description: The SN3 monoclonal antibody reacts with the human CD24 molecule, also known as Heat Stable Antigen (HSA). This 35-50 kDa molecule is anchored in the plasma membrane via phosphatidylinositol and is expressed by erythrocytes, thymocytes, peripheral lymphocytes and myeloid lineage. It has been reported that P-selectin (CD62P) binds to CD24.

Applications Reported: The SN3 antibody has been reported for use in flow cytometric analysis.

Applications Tested: This eBioSN3 (SN3 A5-2H10) antibody has been pre-titrated and tested by flow cytometric analysis of normal human peripheral blood cells. This can be used at 5 µL (0.25 µg) per test. A test is defined as the amount (µg) of antibody that will stain a cell sample in a final volume of 100 µL. Cell number should be determined empirically but can range from 10⁵ to 10⁸ cells /test.

Excitation: 488-561 nm; **Emission:** 578 nm; **Laser:** Blue Laser, Green Laser, Yellow-Green Laser.

Filtration: 0.2 µm post-manufacturing filtered.



CD24 Antibody (12-0247-42) in Flow

Staining of normal human peripheral blood cells with Mouse IgG1 K Isotype Control PE (Product # 12-4714-81) (blue histogram) or Anti-Human CD24 PE (purple histogram). Cells in the granulocyte gate were used for analysis.

[View more figures on thermofisher.com](#)

17 References

Flow Cytometry (17)

Frontiers in immunology

CD16⁺ Monocyte Subset Was Enriched and Functionally Exacerbated in Driving T-Cell Activation and B-Cell Response in Systemic Lupus Erythematosus.

"12-0247 was used in Flow cytometry/Cell sorting to demonstrate that CD16+monocytes were enriched and played a critical role in driving the pathogenic T- and B-cell responses in patients with systemic lupus erythematosus."

Authors: Zhu H,Hu F,Sun X,Zhang X,Zhu L,Liu X,Li X,Xu L,Shi L,Gan Y,Su Y

Species
Human

Dilution
Not Cited

Year
2019

Theranostics

Glutamic Pyruvate Transaminase GPT2 Promotes Tumorigenesis of Breast Cancer Cells by Activating Sonic Hedgehog Signaling.

"12-0247 was used in Flow cytometry/Cell sorting to show that GPT2 promotes tumorigenesis and stemness of breast cancer cells by activating the Shh signalling."

Authors: Cao Y,Lin SH,Wang Y,Chin YE,Kang L,Mi J

Species
Human

Dilution
Not Cited

Year
2018

[View more Flow references on thermofisher.com](#)

More applications with references on thermofisher.com

For Research Use Only. Not for use in diagnostic procedures. Not for resale without express authorization. Products are warranted to operate or perform substantially in conformance with published Product specifications in effect at the time of sale, as set forth in the Production documentation, specifications and/or accompanying package inserts ("Documentation"). No claim of suitability for use in applications regulated by FDA is made. The warranty provided herein is valid only when used by properly trained individuals. Unless otherwise stated in the Documentation, this warranty is limited to one year from date of shipment when the Product is subjected to normal, proper and intended usage. This warranty does not extend to anyone other than the Buyer. Any model or sample furnished to Buyer is merely illustrative of the general type and quality of goods and does not represent that any Product will conform to such model or sample. NO OTHER WARRANTIES, EXPRESS OR IMPLIED, ARE GRANTED INCLUDING WITHOUT LIMITATION, IMPLIED WARRANTIES OF MERCHANTABILITY, FITNESS FOR ANY PARTICULAR PURPOSE, OR NON INFRINGEMENT. BUYER'S EXCLUSIVE REMEDY FOR NON-CONFORMING PRODUCTS DURING THE WARRANTY PERIOD IS LIMITED TO REPAIR, REPLACEMENT OF OR REFUND FOR THE NON-CONFORMING PRODUCT(S) AT SELLER'S SOLE OPTION. THERE IS NO OBLIGATION TO REPAIR, REPLACE OR REFUND FOR PRODUCTS AS THE RESULT OF (I) ACCIDENT, DISASTER OR EVENT OF FORCE MAJEURE, (II) MISUSE, FAULT OR NEGLIGENCE OF OR BY BUYER, (III) USE OF THE PRODUCTS IN A MANNER FOR WHICH THEY WERE NOT DESIGNED, OR (IV) IMPROPER STORAGE AND HANDLING OF THE PRODUCTS. Unless otherwise expressly stated on the Product or in the documentation accompanying the Product, the Product is intended for research only and is not to be used for any other purpose, including without limitation, unauthorized commercial uses, in vitro diagnostic uses, ex vivo or in vivo therapeutic uses, or any type of consumption by or application to human or animals.