

# CD40 Monoclonal Antibody (5C3), PE, eBioscience™

Product Details	
Size	100 Tests
Species Reactivity	Human
Published Species	Human
Host/Isotope	Mouse / IgG1, kappa
Recommended Isotype Control	Mouse IgG1 kappa Isotype Control (P3.6.2.8.1), PE, eBioscience™
Class	Monoclonal
Type	Antibody
Clone	5C3
Conjugate	PE
Form	Liquid
Concentration	5 µL/Test
Purification	Affinity chromatography
Storage buffer	PBS, pH 7.2, with 0.1% gelatin, 0.2% BSA
Contains	0.09% sodium azide
Storage Conditions	4° C, store in dark, DO NOT FREEZE!
RRID	AB_1963582

Applications	Tested	Dilution	Published
Flow Cytometry (Flow)	✓	5 µL (0.015 µg)/test	5 Publications

## Product Specific Information

**Description:** The 5C3 monoclonal antibody reacts with human CD40, a 45-50 kDa type I transmembrane glycoprotein. CD40 is a member of the TNFR family and is expressed by B lymphocytes, follicular dendritic cells, thymic epithelium, and a subset of peripheral T cells. CD40 regulates B cell development and maturation by inducing Ig isotype-switching and in combination with other signals such as IL-4, protects B cells from surface Ig-induced apoptosis and promotes proliferation. Interaction of CD40 with CD154 (gp39), its ligand on T cells, is important in T-B cell crosstalk and plays a role in costimulation and immune regulation. 5C3 is reported to be used for activation of B cells in in vitro functional assays.

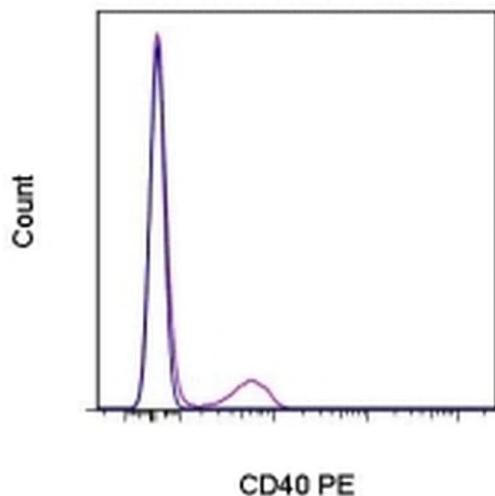
**Applications Reported:** The 5C3 antibody has been reported for use in flow cytometric analysis.

**Applications Tested:** This 5C3 antibody has been pre-titrated and tested by flow cytometric analysis of normal human peripheral blood cells. This can be used at 5 µL (0.015 µg) per test. A test is defined as the amount (µg) of antibody that will stain a cell sample in a final volume of 100 µL. Cell number should be determined empirically but can range from 10<sup>5</sup> to 10<sup>8</sup> cells/test.

**Excitation:** 488-561 nm; **Emission:** 578 nm; **Laser:** Blue Laser, Green Laser, Yellow-Green Laser.

**Filtration:** 0.2 µm post-manufacturing filtered.

## Product Images For CD40 Monoclonal Antibody (5C3), PE, eBioscience™



### CD40 Antibody (12-0409-42) in Flow

Staining of normal human peripheral blood cells with Mouse IgG1 K Isotype Control PE (Product # 12-4714-81) (blue histogram) or Anti-Human CD40 PE (purple histogram). Cells in the lymphocyte gate were used for analysis.

[View more figures on thermofisher.com](#)

### 5 References

#### Flow Cytometry (5)

##### Oncotarget

### Surrogate in vitro activation of innate immunity synergizes with interleukin-7 to unleash rapid antigen-driven outgrowth of CD4+ and CD8+ human peripheral blood T-cells naturally recognizing MUC1, HER2 /neu and other tumor-associated antigens.

"Published figure using CD40 monoclonal antibody (Product # 12-0409-42) in Flow Cytometry"

Authors: Pathangey LB,McCurry DB,Gendler SJ,Dominguez AL,Gorman JE,Pathangey G,Mihalik LA,Dang Y,Disis ML,Cohen PA

##### Species

Not Applicable

##### Dilution

Not Cited

##### Year

2017

##### BMC biotechnology

### A simple, accurate and universal method for quantification of PCR.

"Published figure using CD40 monoclonal antibody (Product # 12-0409-42) in Flow Cytometry"

Authors: Boulter N,Suarez FG,Schibeci S,Sunderland T,Tolhurst O,Hunter T,Hodge G,Handelsman D,Simanainen U,Hendriks E,Duggan K

##### Species

Not Applicable

##### Dilution

Not Cited

##### Year

2016

[View more Flow references on thermofisher.com](#)

### More applications with references on thermofisher.com

For Research Use Only. Not for use in diagnostic procedures. Not for resale without express authorization. Products are warranted to operate or perform substantially in conformance with published Product specifications in effect at the time of sale, as set forth in the Production documentation, specifications and/or accompanying package inserts ("Documentation"). No claim of suitability for use in applications regulated by FDA is made. The warranty provided herein is valid only when used by properly trained individuals. Unless otherwise stated in the Documentation, this warranty is limited to one year from date of shipment when the Product is subjected to normal, proper and intended usage. This warranty does not extend to anyone other than the Buyer. Any model or sample furnished to Buyer is merely illustrative of the general type and quality of goods and does not represent that any Product will conform to such model or sample. NO OTHER WARRANTIES, EXPRESS OR IMPLIED, ARE GRANTED INCLUDING WITHOUT LIMITATION, IMPLIED WARRANTIES OF MERCHANTABILITY, FITNESS FOR ANY PARTICULAR PURPOSE, OR NON-INFRINGEMENT. BUYER'S EXCLUSIVE REMEDY FOR NON-CONFORMING PRODUCTS DURING THE WARRANTY PERIOD IS LIMITED TO REPAIR, REPLACEMENT OF OR REFUND FOR THE NON-CONFORMING PRODUCT(S) AT SELLER'S SOLE OPTION. THERE IS NO OBLIGATION TO REPAIR, REPLACE OR REFUND FOR PRODUCTS AS THE RESULT OF (I) ACCIDENT, DISASTER OR EVENT OF FORCE MAJEURE, (II) MISUSE, FAULT OR NEGLIGENCE OF OR BY BUYER, (III) USE OF THE PRODUCTS IN A MANNER FOR WHICH THEY WERE NOT DESIGNED, OR (IV) IMPROPER STORAGE AND HANDLING OF THE PRODUCTS. Unless otherwise expressly stated on the Product or in the documentation accompanying the Product, the Product is intended for research only and is not to be used for any other purpose, including without limitation, unauthorized commercial uses, in vitro diagnostic uses, ex vivo or in vivo therapeutic uses, or any type of consumption by or application to human or animals.