

CD43 Monoclonal Antibody (eBio84-3C1 (84-3C1)), PE, eBioscience™

Product Details	
Size	100 Tests
Species Reactivity	Human
Published Species	Fish, Human, Mouse
Host/Isotope	Mouse / IgG1, kappa
Recommended Isotype Control	Mouse IgG1 kappa Isotype Control (P3.6.2.8.1), PE, eBioscience™
Class	Monoclonal
Type	Antibody
Clone	eBio84-3C1 (84-3C1)
Conjugate	PE
Form	Liquid
Concentration	5 µL/Test
Purification	Affinity chromatography
Storage buffer	PBS, pH 7.2, with 0.1% gelatin, 0.2% BSA
Contains	0.09% sodium azide
Storage Conditions	4° C, store in dark, DO NOT FREEZE!
RRID	AB_10854419

Applications	Tested	Dilution	Published
Flow Cytometry (Flow)	✓	5 µL (0.125 µg)/test	8 Publications

Product Specific Information

Description: The monoclonal antibody eBio84-3C1 reacts with CD43, which is also known as leukosialin, galactoglycoprotein and sialophorin. CD43 is a sialomucin which like many mucins can have both adhesive and anti-adhesive functions. Expression of CD43 is found on most leukocytes except resting B lymphocytes. Proteolytic processing upon activation decreases surface expression. CD43 is involved in activation of T cells, B cells, NK cells, and monocytes. The counter-receptor for CD43 is CD169 /SIGLEC-1, which is expressed on macrophages.

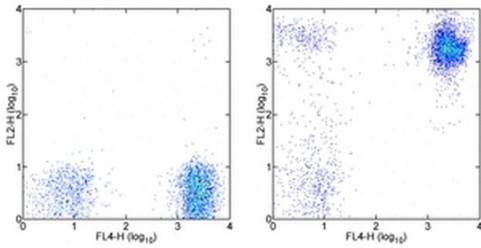
Applications Reported: This eBio84-3C1 (84-3C1) antibody has been reported for use in flow cytometric analysis.

Applications Tested: This eBio84-3C1 (84-3C1) antibody has been pre-titrated and tested by flow cytometric analysis of human peripheral blood cells. This can be used at 5 µL (0.125 µg) per test. A test is defined as the amount (µg) of antibody that will stain a cell sample in a final volume of 100 µL. Cell number should be determined empirically but can range from 10⁵ to 10⁸ cells/test.

Excitation: 488-561 nm; **Emission:** 578 nm; **Laser:** Blue Laser, Green Laser, Yellow-Green Laser.

Filtration: 0.2 µm post-manufacturing filtered.

Product Images For CD43 Monoclonal Antibody (eBio84-3C1 (84-3C1)), PE, eBioscience™



CD43 Antibody (12-0439-42) in Flow

Staining of normal human peripheral blood cells with Anti-Human CD3 APC (Product # 17-0038-42) and Mouse IgG1 kappa Isotype Control PE (Product # 12-4714-81) (left) or Anti-Human CD43 PE (right). Cells in the lymphocyte gate were used for analysis.

[View more figures on thermofisher.com](#)

8 References

Flow Cytometry (8)

NPJ Regenerative medicine

CRISPR/Cas9-based genetic correction for recessive dystrophic epidermolysis bullosa.

"12-0439 was used in Flow cytometry/Cell sorting to showcase the therapeutic potential of gene-editing coupled with stem cell technology for the treatment of recessive dystrophic epidermolysis bullosa."

Authors: Webber BR, Osborn MJ, McElroy AN, Twaroski K, Lonetree CL, DeFeo AP, Xia L, Eide C, Lees CJ, McElmurry RT, Riddle MJ, Kim CJ, Patel DD, Blazar BR, Tolar J

Species
Human

Dilution
Not Cited

Year
2018

Stem cells translational medicine

The Generation of Human T Cell-Derived Induced Pluripotent Stem Cells from Whole Peripheral Blood Mononuclear Cell Culture.

"12-0439 was used in Flow cytometry/Cell sorting to develop a system for generating induced pluripotent stem cells that harbor rearrangements of TCRG and TCRD gene regions without cell-sorting."

Authors: Watanabe D, Koyanagi-Aoi M, Taniguchi-Ikeda M, Yoshida Y, Azuma T, Aoi T

Species
Human
Not Applicable

Dilution
Not Cited
Not Cited

Year
2018

[View more Flow references on thermofisher.com](#)

More applications with references on thermofisher.com

For Research Use Only. Not for use in diagnostic procedures. Not for resale without express authorization. Products are warranted to operate or perform substantially in conformance with published Product specifications in effect at the time of sale, as set forth in the Production documentation, specifications and/or accompanying package inserts ("Documentation"). No claim of suitability for use in applications regulated by FDA is made. The warranty provided herein is valid only when used by properly trained individuals. Unless otherwise stated in the Documentation, this warranty is limited to one year from date of shipment when the Product is subjected to normal, proper and intended usage. This warranty does not extend to anyone other than the Buyer. Any model or sample furnished to Buyer is merely illustrative of the general type and quality of goods and does not represent that any Product will conform to such model or sample. NO OTHER WARRANTIES, EXPRESS OR IMPLIED, ARE GRANTED INCLUDING WITHOUT LIMITATION, IMPLIED WARRANTIES OF MERCHANTABILITY, FITNESS FOR ANY PARTICULAR PURPOSE, OR NON INFRINGEMENT. BUYER'S EXCLUSIVE REMEDY FOR NON-CONFORMING PRODUCTS DURING THE WARRANTY PERIOD IS LIMITED TO REPAIR, REPLACEMENT OF OR REFUND FOR THE NON-CONFORMING PRODUCT(S) AT SELLER'S SOLE OPTION. THERE IS NO OBLIGATION TO REPAIR, REPLACE OR REFUND FOR PRODUCTS AS THE RESULT OF (I) ACCIDENT, DISASTER OR EVENT OF FORCE MAJEURE, (II) MISUSE, FAULT OR NEGLIGENCE OF OR BY BUYER, (III) USE OF THE PRODUCTS IN A MANNER FOR WHICH THEY WERE NOT DESIGNED, OR (IV) IMPROPER STORAGE AND HANDLING OF THE PRODUCTS. Unless otherwise expressly stated on the Product or in the documentation accompanying the Product, the Product is intended for research only and is not to be used for any other purpose, including without limitation, unauthorized commercial uses, in vitro diagnostic uses, ex vivo or in vivo therapeutic uses, or any type of consumption by or application to human or animals.