

CD150 Monoclonal Antibody (mShad150), PE, eBioscience™

Product Details	
Size	25 µg
Species Reactivity	Mouse
Published Species	Mouse, Human
Host/Isotype	Rat / IgG2b, lambda
Recommended Isotype Control	Rat IgG2b kappa Isotype Control (eB149/10H5), PE, eBioscience™
Class	Monoclonal
Type	Antibody
Clone	mShad150
Conjugate	PE
Excitation/Emission Max	565/576 nm
Form	Liquid
Concentration	0.2 mg/mL
Purification	Affinity chromatography
Storage buffer	PBS, pH 7.2
Contains	0.09% sodium azide
Storage conditions	4° C, store in dark, DO NOT FREEZE!
RRID	AB_1548767

Applications	Tested Dilution	Publications
Flow Cytometry (Flow)	0.125 µg/test	12 Publications

Product Specific Information

Description: The mShad150 monoclonal antibody reacts with mouse CD150, an ~70 kDa transmembrane glycoprotein also known as Signaling Lymphocyte Activation Molecule (SLAM). CD150 is expressed by T cells, in particular Th1, and B cells; this expression is rapidly upregulated upon activation. Immature thymocytes and dendritic cells also express this antigen. Signaling through SLAM in T cells induces proliferation and augmentation of the interferon-gamma response. Furthermore, SLAM is thought to play a role in adhesion between the T cell and antigen-presenting cell. The mShad150 antibody has been reported to also stain the CD150+CD244-CD48-CD41- population of pluripotent hematopoietic stem cells.

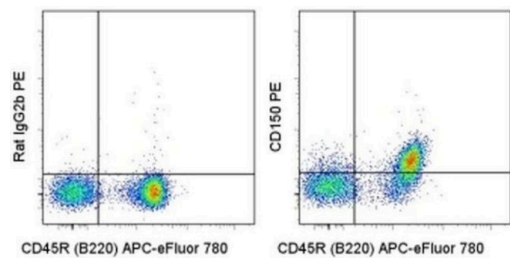
Applications Reported: This mShad150 antibody has been reported for use in flow cytometric analysis.

Applications Tested: This mShad150 antibody has been tested by flow cytometric analysis of mouse splenocytes. This can be used at less than or equal to 0.125 µg per test. A test is defined as the amount (µg) of antibody that will stain a cell sample in a final volume of 100 µL. Cell number should be determined empirically but can range from 10⁵ to 10⁸ cells/test. It is recommended that the antibody be carefully titrated for optimal performance in the assay of interest.

Excitation: 488-561 nm; **Emission:** 578 nm; **Laser:** Blue Laser, Green Laser, Yellow-Green Laser.

Filtration: 0.2 µm post-manufacturing filtered.

Product Images For CD150 Monoclonal Antibody (mShad150), PE, eBioscience™



CD150 Antibody (12-1502-80) in Flow
Staining of C57Bl/6 splenocytes with Anti-Human/Mouse CD45R (B220) APC-eFluor® 780 (Product # 47-0452-82) and 0.06 µg of Rat IgG2b K Isotype Control PE (Product # 12-4031-82) (left) or 0.06 µg of Anti-Mouse CD150 PE (right). Total viable cells were used for analysis.

[View more figures on thermofisher.com](#)

12 References

Flow Cytometry (12)

<p>Wellcome open research</p> <p>Activation of regulatory T cells triggers specific changes in glycosylation associated with Siglec-1-dependent inflammatory responses.</p> <p>"12-1502-82 was used in Flow Cytometry to investigate the molecular basis for Siglec-1 binding to regulatory T cells using in vitro-induced cells as a model system."</p> <p>Authors: Wu G,Murugesan G,Nagala M,McCraw A,Haslam SM,Dell A,Crocker PR</p>	<p>Year 2022</p> <p>Species Mouse</p> <p>Dilution 1:200</p>
<p>Journal of neuroinflammation</p> <p>Effects of long-term and brain-wide colonization of peripheral bone marrow-derived myeloid cells in the CNS.</p> <p>"Published figure using CD150 monoclonal antibody (Product # 12-1502-82) in Flow Cytometry"</p> <p>Authors: Hohsfield LA,Najafi AR,Ghorbanian Y,Soni N,Hingco EE,Kim SJ,Jue AD,Swarup V,Inlay MA,Green KN</p>	<p>Year 2020</p>

[View more Flow references on thermofisher.com](#)

More applications with references on thermofisher.com

For Research Use Only. Not for use in diagnostic procedures. Not for resale without express authorization. Products are warranted to operate or perform substantially in conformance with published Product specifications in effect at the time of sale, as set forth in the Production documentation, specifications and/or accompanying package inserts ("Documentation"). No claim of suitability for use in applications regulated by FDA is made. The warranty provided herein is valid only when used by properly trained individuals. Unless otherwise stated in the Documentation, this warranty is limited to one year from date of shipment when the Product is subjected to normal, proper and intended usage. This warranty does not extend to anyone other than the Buyer. Any model or sample furnished to Buyer is merely illustrative of the general type and quality of goods and does not represent that any Product will conform to such model or sample. NO OTHER WARRANTIES, EXPRESS OR IMPLIED, ARE GRANTED INCLUDING WITHOUT LIMITATION, IMPLIED WARRANTIES OF MERCHANTABILITY, FITNESS FOR ANY PARTICULAR PURPOSE, OR NON-INFRINGEMENT. BUYER'S EXCLUSIVE REMEDY FOR NON-CONFORMING PRODUCTS DURING THE WARRANTY PERIOD IS LIMITED TO REPAIR, REPLACEMENT OF OR REFUND FOR THE NON-CONFORMING PRODUCT(S) AT SELLER'S SOLE OPTION. THERE IS NO OBLIGATION TO REPAIR, REPLACE OR REFUND FOR PRODUCTS AS THE RESULT OF (i) ACCIDENT, DISASTER OR EVENT OF FORCE MAJEURE, (ii) MISUSE, FAULT OR NEGLIGENCE OF OR BY BUYER, (iii) USE OF THE PRODUCTS IN A MANNER FOR WHICH THEY WERE NOT DESIGNED, OR (iv) IMPROPER STORAGE AND HANDLING OF THE PRODUCTS. Unless otherwise expressly stated on the Product or in the documentation accompanying the Product, the Product is intended for research only and is not to be used for any other purpose, including without limitation, unauthorized commercial uses, in vitro diagnostic uses, ex vivo or in vivo therapeutic uses, or any type of consumption by or application to human or animals.