

CD150 Monoclonal Antibody (A12 (7D4)), PE, eBioscience™

Product Details	
Size	100 Tests
Species Reactivity	Human
Published Species	Mouse
Host/Isotype	Mouse / IgG1, kappa
Recommended Isotype Control	Mouse IgG1 kappa Isotype Control (P3.6.2.8.1), PE, eBioscience™
Class	Monoclonal
Type	Antibody
Clone	A12 (7D4)
Conjugate	PE
Excitation/Emission Max	565/576 nm
Form	Liquid
Concentration	5 µL/Test
Purification	Affinity chromatography
Storage buffer	PBS, pH 7.2, with 0.2% BSA
Contains	0.09% sodium azide
Storage conditions	4° C, store in dark, DO NOT FREEZE!
RRID	AB_10855029

Applications	Tested Dilution	Publications
Flow Cytometry (Flow)	5 µL (0.5 µg)/test	2 Publications

Product Specific Information

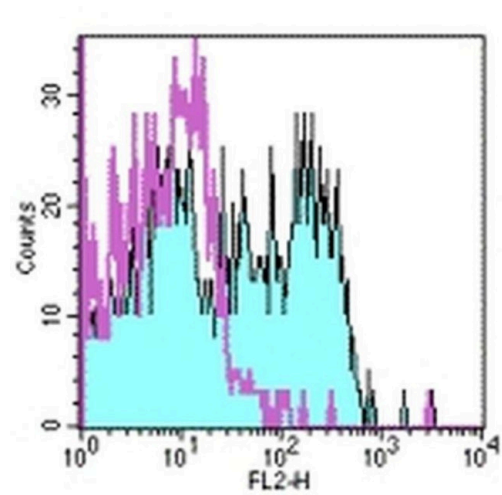
Description: The A12 monoclonal antibody reacts with human CD150, an ~70 kDa transmembrane glycoprotein also known as Signaling Lymphocyte Activation Molecule (SLAM). CD150 is expressed by T and B cells and its expression is rapidly upregulated on these cells upon activation. Immature thymocytes and dendritic cells also express this antigen. Signaling through SLAM induces proliferation and cytokine production of T cells and SLAM plays a role in activation of T and B cells.

Applications Reported: This A12 (7D4) antibody has been reported for use in flow cytometric analysis.

Applications Tested: This A12 (7D4) antibody has been pre-titrated and tested by flow cytometric analysis of normal human peripheral blood cells. This can be used at 5 µL (0.5 µg) per test. A test is defined as the amount (µg) of antibody that will stain a cell sample in a final volume of 100 µL. Cell number should be determined empirically but can range from 10⁵ to 10⁸ cells /test.

Excitation: 488-561 nm; **Emission:** 578 nm; **Laser:** Blue Laser, Green Laser, Yellow-Green Laser.

Filtration: 0.2 µm post-manufacturing filtered.



CD150 Antibody (12-1509-42) in Flow
Staining of normal human peripheral blood cells with Mouse IgG1 K Isotype Control PE (Product # 12-4714-81) (open histogram) or Anti-Human CD150 PE (filled histogram). Cells in the lymphocyte gate were used for analysis.

2 References

Flow Cytometry (2)

<p>Clinical & developmental immunology</p> <p>Depletion of regulatory T cells in a mouse experimental glioma model through anti-CD25 treatment results in the infiltration of non-immunosuppressive myeloid cells in the brain.</p> <p>"12-1509 was used in Flow cytometry/Cell sorting to evaluate the local elimination of Tregs as a tool for augmentation of the antitumoural response."</p> <p>Authors: Maes W,Verschuere T,Van Hoylandt A,Boon L,Van Gool S</p>	<p>Year 2013</p> <p>Species Mouse</p>
<p>Journal of immunology (Baltimore, Md. : 1950)</p> <p>In vivo induction of type 1-like regulatory T cells using genetically modified B cells confers long-term IL-10-dependent antigen-specific unresponsiveness.</p> <p>"12-1509 was used in Flow cytometry/Cell sorting to design a method for in vivo induction of Ag-specific Tregs, in BALB /c H-2d, that share characteristics with type 1 Tregs."</p> <p>Authors: Ahangarani RR,Janssens W,VanderElst L,Carlier V,VandenDriessche T,Chuah M,Weynand B,Vanoirbeek JA, Jacquemin M,Saint-Remy JM</p>	<p>Year 2009</p> <p>Species Mouse</p>

For Research Use Only. Not for use in diagnostic procedures. Not for resale without express authorization. Products are warranted to operate or perform substantially in conformance with published Product specifications in effect at the time of sale, as set forth in the Production documentation, specifications and/or accompanying package inserts ("Documentation"). No claim of suitability for use in applications regulated by FDA is made. The warranty provided herein is valid only when used by properly trained individuals. Unless otherwise stated in the Documentation, this warranty is limited to one year from date of shipment when the Product is subjected to normal, proper and intended usage. This warranty does not extend to anyone other than the Buyer. Any model or sample furnished to Buyer is merely illustrative of the general type and quality of goods and does not represent that any Product will conform to such model or sample. NO OTHER WARRANTIES, EXPRESS OR IMPLIED, ARE GRANTED INCLUDING WITHOUT LIMITATION, IMPLIED WARRANTIES OF MERCHANTABILITY, FITNESS FOR ANY PARTICULAR PURPOSE, OR NON INFRINGEMENT. BUYER'S EXCLUSIVE REMEDY FOR NON-CONFORMING PRODUCTS DURING THE WARRANTY PERIOD IS LIMITED TO REPAIR, REPLACEMENT OF OR REFUND FOR THE NON-CONFORMING PRODUCT(S) AT SELLER'S SOLE OPTION. THERE IS NO OBLIGATION TO REPAIR, REPLACE OR REFUND FOR PRODUCTS AS THE RESULT OF (I) ACCIDENT, DISASTER OR EVENT OF FORCE MAJEURE, (II) MISUSE, FAULT OR NEGLIGENCE OF OR BY BUYER, (III) USE OF THE PRODUCTS IN A MANNER FOR WHICH THEY WERE NOT DESIGNED, OR (IV) IMPROPER STORAGE AND HANDLING OF THE PRODUCTS. Unless otherwise expressly stated on the Product or in the documentation accompanying the Product, the Product is intended for research only and is not to be used for any other purpose, including without limitation, unauthorized commercial uses, in vitro diagnostic uses, ex vivo or in vivo therapeutic uses, or any type of consumption by or application to human or animals.