

CD154 (CD40 Ligand) Monoclonal Antibody (24-31), PE, eBioscience™

Product Details	
Size	100 Tests
Species Reactivity	Cynomolgus Monkey, Human
Published Species	Human
Host/Isotype	Mouse / IgG1, kappa
Recommended Isotype Control	Mouse IgG1 kappa Isotype Control (P3.6.2.8.1), PE, eBioscience™
Class	Monoclonal
Type	Antibody
Clone	24-31
Conjugate	PE
Form	Liquid
Concentration	5 µL/Test
Purification	Affinity chromatography
Storage buffer	PBS, pH 7.2, with 0.1% gelatin, 0.2% BSA
Contains	0.09% sodium azide
Storage Conditions	4° C, store in dark, DO NOT FREEZE!
RRID	AB_1963568

Applications	Tested Dilution	Publications
Flow Cytometry (Flow)	5 µL (0.5 µg)/test	4 Publications

Product Specific Information

Description: The 24-31 monoclonal antibody reacts with human CD154, a 39 kDa transmembrane glycoprotein also known as gp39 and CD40 ligand (CD40L). CD154 is a member of the TNF superfamily and is expressed transiently by activated T cells. Through its binding to CD40 on antigen presenting cells including B cells, monocytes/macrophages and dendritic cells, CD154 serves a crucial function in T-APC cognate interaction. CD154 interaction with CD40 transduces signals for T-dependent B-cell activation and induces B cell cycle entry. 24-31 cross-reacts with the cynomolgus monkey CD154.

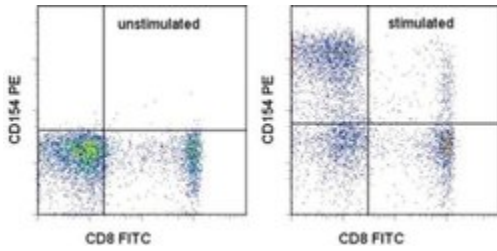
Applications Reported: 24-31 has been reported for use in flow cytometric analysis.

Applications Tested: This 24-31 antibody has been pre-titrated and tested by flow cytometric analysis of activated normal human peripheral blood cells. This can be used at 5 µL (0.5 µg) per test. A test is defined as the amount (µg) of antibody that will stain a cell sample in a final volume of 100 µL. Cell number should be determined empirically but can range from 10⁵ to 10⁸ cells/test.

Excitation: 488-561 nm; **Emission:** 578 nm; **Laser:** Blue Laser, Green Laser, Yellow-Green Laser.

Filtration: 0.2 µm post-manufacturing filtered.

Product Images For CD154 (CD40 Ligand) Monoclonal Antibody (24-31), PE, eBioscience™



CD154 (CD40 Ligand) Antibody (12-1548-42) in Flow

Human peripheral blood cells unstimulated (left) or stimulated for 5 hours with Cell Stimulation Cocktail (500X) (Product # 00-4970-03) (right) were stained with Anti-Human CD8a FITC (Product # 11-0088-42) and Anti-Human CD154 (CD40 Ligand) PE (right). Cells in the lymphocyte gate were used for analysis.

4 References

Flow Cytometry (4)

Blood

Targeted gene editing restores regulated CD40L function in X-linked hyper-IgM syndrome.

"12-1548 was used in Flow cytometry/Cell sorting to demonstrate the feasibility of engineered nuclease-directed gene repair to restore endogenously regulated CD40L, and the potential for its use in T-cell therapy for X-linked hyper-IgM syndrome syndrome."

Authors: Hubbard N,Hagin D,Sommer K,Song Y,Khan I,Clough C,Ochs HD,Rawlings DJ,Scharenberg AM,Torgerson TR

Species
Human

Dilution
Not Cited

Year
2016

Journal of immunology (Baltimore, Md. : 1950)

Endothelial microparticles interact with and support the proliferation of T cells.

"12-1548 was used in Flow cytometry/Cell sorting to explore the effect of endothelial cell microparticles in T cell activation and antigen presentation."

Authors: Whewey J,Latham SL,Combes V,Grau GE

Species
Human

Dilution
Not Cited

Year
2014

[View more Flow references on thermofisher.com](https://thermofisher.com)

For Research Use Only. Not for use in diagnostic procedures. Not for resale without express authorization. Products are warranted to operate or perform substantially in conformance with published Product specifications in effect at the time of sale, as set forth in the Production documentation, specifications and/or accompanying package inserts ("Documentation"). No claim of suitability for use in applications regulated by FDA is made. The warranty provided herein is valid only when used by properly trained individuals. Unless otherwise stated in the Documentation, this warranty is limited to one year from date of shipment when the Product is subjected to normal, proper and intended usage. This warranty does not extend to anyone other than the Buyer. Any model or sample furnished to Buyer is merely illustrative of the general type and quality of goods and does not represent that any Product will conform to such model or sample. NO OTHER WARRANTIES, EXPRESS OR IMPLIED, ARE GRANTED INCLUDING WITHOUT LIMITATION, IMPLIED WARRANTIES OF MERCHANTABILITY, FITNESS FOR ANY PARTICULAR PURPOSE, OR NON-INFRINGEMENT. BUYER'S EXCLUSIVE REMEDY FOR NON-CONFORMING PRODUCTS DURING THE WARRANTY PERIOD IS LIMITED TO REPAIR, REPLACEMENT OF OR REFUND FOR THE NON-CONFORMING PRODUCT(S) AT SELLER'S SOLE OPTION. THERE IS NO OBLIGATION TO REPAIR, REPLACE OR REFUND FOR PRODUCTS AS THE RESULT OF (I) ACCIDENT, DISASTER OR EVENT OF FORCE MAJEURE, (II) MISUSE, FAULT OR NEGLIGENCE OF OR BY BUYER, (III) USE OF THE PRODUCTS IN A MANNER FOR WHICH THEY WERE NOT DESIGNED, OR (IV) IMPROPER STORAGE AND HANDLING OF THE PRODUCTS. Unless otherwise expressly stated on the Product or in the documentation accompanying the Product, the Product is intended for research only and is not to be used for any other purpose, including without limitation, unauthorized commercial uses, in vitro diagnostic uses, ex vivo or in vivo therapeutic uses, or any type of consumption by or application to human or animals.