

CD160 Monoclonal Antibody (eBioCNX46-3 (CNX46-3)), PE, eBioscience™

Product Details	
Size	100 µg
Species Reactivity	Mouse
Published Species	Mouse, Human
Host/Isotype	Rat / IgG2a, kappa
Recommended Isotype Control	Rat IgG2a kappa Isotype Control (eBR2a), PE, eBioscience™
Class	Monoclonal
Type	Antibody
Clone	eBioCNX46-3 (CNX46-3)
Conjugate	PE
Form	Liquid
Concentration	0.2 mg/mL
Purification	Affinity chromatography
Storage buffer	PBS, pH 7.2, with 0.1% gelatin
Contains	0.09% sodium azide
Storage Conditions	4° C, store in dark, DO NOT FREEZE!
RRID	AB_1210732

Applications	Tested Dilution	Publications
Flow Cytometry (Flow)	1 µg/test	4 Publications

Product Specific Information

Description: CD160 is a glycosylphosphatidylinositol (GPI)-anchored Ig-like glycoprotein first identified on human lymphocytes with the monoclonal antibody BY55. In mice, CD160 is expressed on almost all (intestinal intraepithelial lymphocytes) iIELs, NKT cells, most TCRgammadelta T cells, few NK cells and a minor subset of CD8+ T cells. Murine CD160 has been shown to bind to a wide range of classical and non classical MHC class I molecules and regulate NK cell activation. In vitro, CD3 activation of murine CD8+ T cells increases the expression of CD160 and induces the release of soluble CD160 (sCD160). In human, CD160 mAb cross-linking triggers TNF alpha, IFN gamma and IL-6 cytokine production by peripheral blood NK cells and inhibits tube formation and induces apoptosis of endothelial cells. In mice, cross-linking of CD160 with the CNX46-3 antibody regulates NK cell activation both positively and negatively, depending on the stimulus.

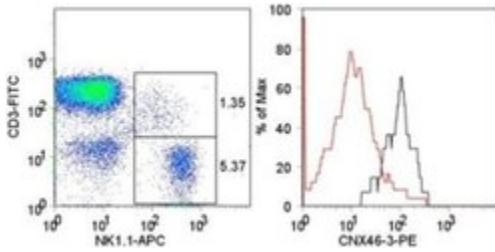
Applications Reported: This eBioCNX46-3 (CNX46-3) antibody has been reported for use in flow cytometric analysis.

Applications Tested: This eBioCNX46-3 (CNX46-3) antibody has been tested by flow cytometric analysis of C57Bl/6 mouse splenocytes. This can be used at less than or equal to 1 µg per test. A test is defined as the amount (µg) of antibody that will stain a cell sample in a final volume of 100 µL. Cell number should be determined empirically but can range from 10⁵ to 10⁸ cells/test. It is recommended that the antibody be carefully titrated for optimal performance in the assay of interest.

Excitation: 488-561 nm; Emission: 578 nm; Laser: Blue Laser, Green Laser, Yellow-Green Laser.

Filtration: 0.2 µm post-manufacturing filtered.

Product Images For CD160 Monoclonal Antibody (eBioCNX46-3 (CNX46-3)), PE, eBioscience™



CD160 Antibody (12-1601-82) in Flow

Staining of C57BL/6 splenocytes with Anti-Mouse CD3 FITC (Product # 11-0031-82), Anti-Mouse NK1-1 APC (Product # 17-5941-82), and 0.5 µg of Anti-Mouse CD160 PE. The histogram (right) demonstrates staining of CD160 on NK1-1+CD3⁺ cells (red histogram) and NK1-1+CD3⁺ cells (black histogram), as gated in the dot plot (left).

[View more figures on thermofisher.com](https://www.thermofisher.com)

4 References

Flow Cytometry (4)

Journal of immunology (Baltimore, Md. : 1950)

IL-22-dependent attenuation of T cell-dependent (ConA) hepatitis in herpes virus entry mediator deficiency.

"12-1601 was used in Flow cytometry/Cell sorting to investigate modulation of hepatitis-inducing T-cell responses by the coinhibitor herpes virus entry mediator."

Authors: Wahl C,Wegenka UM,Leithäuser F,Schirmbeck R,Reimann J

Species
Mouse

Dilution
Not Cited

Year
2009

Nature communications

An IL-27/NFIL3 signalling axis drives Tim-3 and IL-10 expression and T-cell dysfunction.

"12-1601 was used in Flow cytometry/Cell sorting to investigate the cytokines and signalling pathways that drive T cell expression of the inhibitory receptor Tim-3."

Authors: Zhu C,Sakuishi K,Xiao S,Sun Z,Zaghouani S,Gu G,Wang C,Tan DJ,Wu C,Rangachari M,Pertel T,Jin HT, Ahmed R,Anderson AC,Kuchroo VK

Species
Mouse

Dilution
Not Cited

Year
2015

[View more Flow references on thermofisher.com](https://www.thermofisher.com)

For Research Use Only. Not for use in diagnostic procedures. Not for resale without express authorization. Products are warranted to operate or perform substantially in conformance with published Product specifications in effect at the time of sale, as set forth in the Production documentation, specifications and/or accompanying package inserts ("Documentation"). No claim of suitability for use in applications regulated by FDA is made. The warranty provided herein is valid only when used by properly trained individuals. Unless otherwise stated in the Documentation, this warranty is limited to one year from date of shipment when the Product is subjected to normal, proper and intended usage. This warranty does not extend to anyone other than the Buyer. Any model or sample furnished to Buyer is merely illustrative of the general type and quality of goods and does not represent that any Product will conform to such model or sample. NO OTHER WARRANTIES, EXPRESS OR IMPLIED, ARE GRANTED INCLUDING WITHOUT LIMITATION, IMPLIED WARRANTIES OF MERCHANTABILITY, FITNESS FOR ANY PARTICULAR PURPOSE, OR NON INFRINGEMENT. BUYER'S EXCLUSIVE REMEDY FOR NON-CONFORMING PRODUCTS DURING THE WARRANTY PERIOD IS LIMITED TO REPAIR, REPLACEMENT OF OR REFUND FOR THE NON-CONFORMING PRODUCT(S) AT SELLER'S SOLE OPTION. THERE IS NO OBLIGATION TO REPAIR, REPLACE OR REFUND FOR PRODUCTS AS THE RESULT OF (I) ACCIDENT, DISASTER OR EVENT OF FORCE MAJEURE, (II) MISUSE, FAULT OR NEGLIGENCE OF OR BY BUYER, (III) USE OF THE PRODUCTS IN A MANNER FOR WHICH THEY WERE NOT DESIGNED, OR (IV) IMPROPER STORAGE AND HANDLING OF THE PRODUCTS. Unless otherwise expressly stated on the Product or in the documentation accompanying the Product, the Product is intended for research only and is not to be used for any other purpose, including without limitation, unauthorized commercial uses, in vitro diagnostic uses, ex vivo or in vivo therapeutic uses, or any type of consumption by or application to human or animals.