

CD209 (DC-SIGN) Monoclonal Antibody (eB-h209), PE, eBioscience™

Product Details	
Size	100 Tests
Species Reactivity	Human
Published Species	Human
Host/Isotype	Rat / IgG2a, kappa
Recommended Isotype Control	Rat IgG2a kappa Isotype Control (eBR2a), PE, eBioscience™
Class	Monoclonal
Type	Antibody
Clone	eB-h209
Conjugate	PE
Form	Liquid
Concentration	5 µL/Test
Purification	Affinity chromatography
Storage buffer	PBS, pH 7.2, with 0.1% gelatin, 0.2% BSA
Contains	0.09% sodium azide
Storage conditions	4° C, store in dark, DO NOT FREEZE!
RRID	AB_10853324

Applications	Tested Dilution	Publications
Flow Cytometry (Flow)	5 µL (0.06 µg)/test	4 Publications

Product Specific Information

Description: The eB-h209 monoclonal antibody reacts with human CD209, also known as DC-SIGN, a 44 kDa type II transmembrane protein. DC-SIGN contains a C-type lectin binding domain and binds ICAM-3, ICAM-2, and HIV virus. Human dendritic cells preferentially express DC-SIGN. It has been postulated that DC-SIGN serves as a receptor for capture, trafficking, and transmission of HIV to T cells and supports primary immune response. eB-h209 was developed against a C-terminal peptide of human DC-SIGN.

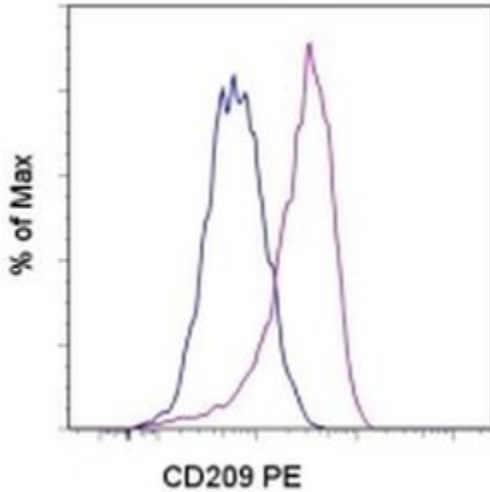
Applications Reported: The eB-h209 antibody has been reported for use in flow cytometric analysis.

Applications Tested: This eB-h209 antibody has been pre-titrated and tested by flow cytometric analysis of cultured human dendritic cells and peripheral blood cells. This can be used at 5 µL (0.06 µg) per test. A test is defined as the amount (µg) of antibody that will stain a cell sample in a final volume of 100 µL. Cell number should be determined empirically but can range from 10⁵ to 10⁸ cells/test.

Excitation: 488-561 nm; **Emission:** 578 nm; **Laser:** Blue Laser, Green Laser, Yellow-Green Laser.

Filtration: 0.2 µm post-manufacturing filtered.

Product Images For CD209 (DC-SIGN) Monoclonal Antibody (eB-h209), PE, eBioscience™



CD209 (DC-SIGN) Antibody (12-2099-42) in Flow

Staining of human monocyte-derived immature dendritic cells with Rat IgG2a K Isotype Control PE (Product # 12-4321-80) (blue histogram) or Anti-Human CD209 (DC-SIGN) PE (purple histogram). Cells in the large forward scatter population were used for analysis.

4 References

Flow Cytometry (4)

PLoS pathogens

Porphyromonas gingivalis evasion of autophagy and intracellular killing by human myeloid dendritic cells involves DC-SIGN-TLR2 crosstalk.

"Published figure using CD209 (DC-SIGN) monoclonal antibody (Product # 12-2099-42) in Flow Cytometry"

Authors: El-Awady AR, Miles B, Scisci E, Kurago ZB, Palani CD, Arce RM, Waller JL, Genco CA, Slocum C, Manning M, Schoenlein PV, Cutler CW

Species

Not Applicable

Dilution

Not Cited

Year

2015

Mediators of inflammation

The Correlation of CD206, CD209, and Disease Severity in Behçet's Disease with Arthritis.

"12-2099 was used in Flow cytometry/Cell sorting to analyse the expression of CD206, CD209, and Dectin-1 in active and inactive Behcet's disease patients with arthritis."

Authors: Choi B, Suh CH, Kim HA, Sayeed HM, Sohn S

Species

Human

Dilution

Not Cited

Year

2017

[View more Flow references on thermofisher.com](#)

For Research Use Only. Not for use in diagnostic procedures. Not for resale without express authorization. Products are warranted to operate or perform substantially in conformance with published Product specifications in effect at the time of sale, as set forth in the Production documentation, specifications and/or accompanying package inserts ("Documentation"). No claim of suitability for use in applications regulated by FDA is made. The warranty provided herein is valid only when used by properly trained individuals. Unless otherwise stated in the Documentation, this warranty is limited to one year from date of shipment when the Product is subjected to normal, proper and intended usage. This warranty does not extend to anyone other than the Buyer. Any model or sample furnished to Buyer is merely illustrative of the general type and quality of goods and does not represent that any Product will conform to such model or sample. NO OTHER WARRANTIES, EXPRESS OR IMPLIED, ARE GRANTED INCLUDING WITHOUT LIMITATION, IMPLIED WARRANTIES OF MERCHANTABILITY, FITNESS FOR ANY PARTICULAR PURPOSE, OR NON INFRINGEMENT. BUYER'S EXCLUSIVE REMEDY FOR NON-CONFORMING PRODUCTS DURING THE WARRANTY PERIOD IS LIMITED TO REPAIR, REPLACEMENT OF OR REFUND FOR THE NON-CONFORMING PRODUCT(S) AT SELLER'S SOLE OPTION. THERE IS NO OBLIGATION TO REPAIR, REPLACE OR REFUND FOR PRODUCTS AS THE RESULT OF (I) ACCIDENT, DISASTER OR EVENT OF FORCE MAJEURE, (II) MISUSE, FAULT OR NEGLIGENCE OF OR BY BUYER, (III) USE OF THE PRODUCTS IN A MANNER FOR WHICH THEY WERE NOT DESIGNED, OR (IV) IMPROPER STORAGE AND HANDLING OF THE PRODUCTS. Unless otherwise expressly stated on the Product or in the documentation accompanying the Product, the Product is intended for research only and is not to be used for any other purpose, including without limitation, unauthorized commercial uses, in vitro diagnostic uses, ex vivo or in vivo therapeutic uses, or any type of consumption by or application to human or animals.