

GILZ Monoclonal Antibody (CFMKG15), PE, eBioscience™

Product Details	
Size	100 µg
Species Reactivity	Human, Mouse
Published Species	Human, Mouse
Host/Isotype	Rat / IgG2a, kappa
Recommended Isotype Control	Rat IgG2a kappa Isotype Control (eBR2a), PE, eBioscience™
Class	Monoclonal
Type	Antibody
Clone	CFMKG15
Conjugate	PE
Excitation/Emission Max	565/576 nm
Form	Liquid
Concentration	0.2 mg/mL
Purification	Affinity chromatography
Storage buffer	PBS, pH 7.2
Contains	0.09% sodium azide
Storage conditions	4° C, store in dark, DO NOT FREEZE!
RRID	AB_1659716

Applications	Tested Dilution	Publications
Immunocytochemistry (ICC/IF)	Assay-Dependent	-
Flow Cytometry (Flow)	0.5 µg/test	5 Publications

Product Specific Information

Description: GILZ is a leucine-zipper-containing protein that is induced by glucocorticoids. It is expressed in mast cells, monocytes, macrophages, dendritic cells, and T cells. GILZ has been shown to inhibit production of IL-2 as well as TCR-driven upregulation of FasL. GILZ mediates these changes in transcription, at least in part, by inhibiting DNA-binding of the transcription factors AP-1 and NF-kappaB. GILZ has also been shown to mediate anti-inflammatory signals in macrophages and dendritic cells by interfering with NF-kappaB-mediated signaling. Although GILZ has been reported to localize to the nucleus, more recent reports as well as testing at eBioscience have observed predominantly cytoplasmic staining.

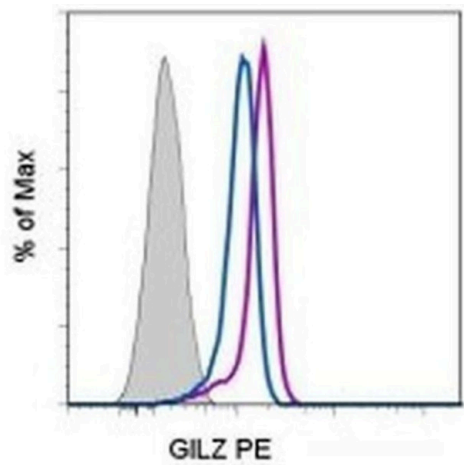
Applications Reported: This CFMKG15 antibody has been reported for use in intracellular staining followed by flow cytometric analysis and immunocytochemistry.

Applications Tested: This CFMKG15 antibody has been tested by intracellular flow cytometric analysis of dexamethasone-treated mouse lymph node cells and human peripheral blood cells. This can be used at less than or equal to 0.5 µg per test. A test is defined as the amount (µg) of antibody that will stain a cell sample in a final volume of 100 µL. Cell number should be determined empirically but can range from 10⁵ to 10⁸ cells/test. It is recommended that the antibody be carefully titrated for optimal performance in the assay of interest. For intracellular staining with CFMKG15, it is recommended to use IC Fixation Buffer (cat. 00-8222) followed by permeabilization with a 1X dilution of the 10X Permeabilization Buffer (cat. 00-8333).

Excitation: 488-561 nm; Emission: 578 nm; Laser: Blue Laser, Green Laser, Yellow-Green Laser.

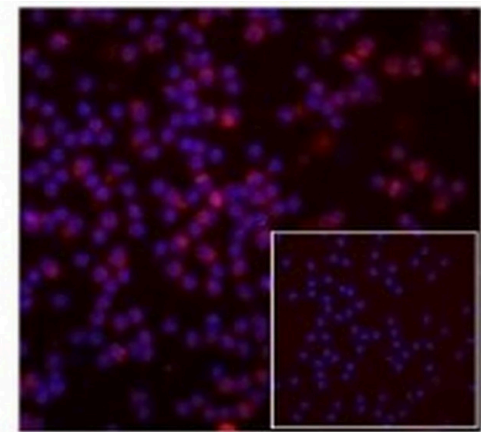
Filtration: 0.2 µm post-manufacturing filtered.

Product Images For GILZ Monoclonal Antibody (CFMKG15), PE, eBioscience™



GILZ Antibody (12-4033-82) in Flow

C57BL/6 lymph node cells were cultured for 3 hr with (purple histogram) or without (blue histogram) dexamethasone, followed by intracellular staining with 0.25 µg of Rat IgG2a kappa Isotype Control PE (Product # 12-4321-80) (filled histogram) or 0.25 µg of Anti-Human/Mouse GILZ PE (filled histograms). CD3+ cells in the lymphocyte gate were used for analysis.



GILZ Antibody (12-4033-82) in ICC/IF

Normal human peripheral blood cells were cultured for 3 hr with dexamethasone, followed by intracellular staining with 5 µg/mL of Rat IgG2a kappa Isotype Control PE (Product # 12-4321-80) (inset) or 5 µg/mL of Anti-Human/Mouse GILZ PE. Cells were cytopun onto glass slides and the nuclei were counterstained with DAPI.

View more figures on thermofisher.com

Flow Cytometry (5)

Frontiers in pharmacology	Year 2021
Integrin 41/VCAM-1 Interaction Evokes Dynamic Cell Aggregation Between Immune Cells and Human Lung Microvascular Endothelial Cells at Infectious Hemolysis.	Species Human
"Published figure using GILZ monoclonal antibody (Product # 12-4033-82) in Flow Cytometry"	
Authors: Lou HY,Yan HP,Yang LG,Fan JH,Cho WC,Xiao ZH,Li SJ	
Cell reports	Year 2021
Chronic stress physically spares but functionally impairs innate-like invariant T cells.	
"Published figure using GILZ monoclonal antibody (Product # 12-4033-82) in Flow Cytometry"	
Authors: Rudak PT,Choi J,Parkins KM,Summers KL,Jackson DN,Foster PJ,Skaro AI,Leslie K,McAlister VC,Kuchroo VK, Inoue W,Lantz O,Haeryfar SMM	

[View more Flow references on thermofisher.com](#)

More applications with references on thermofisher.com

For Research Use Only. Not for use in diagnostic procedures. Not for resale without express authorization. Products are warranted to operate or perform substantially in conformance with published Product specifications in effect at the time of sale, as set forth in the Production documentation, specifications and/or accompanying package inserts ("Documentation"). No claim of suitability for use in applications regulated by FDA is made. The warranty provided herein is valid only when used by properly trained individuals. Unless otherwise stated in the Documentation, this warranty is limited to one year from date of shipment when the Product is subjected to normal, proper and intended usage. This warranty does not extend to anyone other than the Buyer. Any model or sample furnished to Buyer is merely illustrative of the general type and quality of goods and does not represent that any Product will conform to such model or sample. NO OTHER WARRANTIES, EXPRESS OR IMPLIED, ARE GRANTED INCLUDING WITHOUT LIMITATION, IMPLIED WARRANTIES OF MERCHANTABILITY, FITNESS FOR ANY PARTICULAR PURPOSE, OR NON INFRINGEMENT. BUYER'S EXCLUSIVE REMEDY FOR NON-CONFORMING PRODUCTS DURING THE WARRANTY PERIOD IS LIMITED TO REPAIR, REPLACEMENT OF OR REFUND FOR THE NON-CONFORMING PRODUCT(S) AT SELLER'S SOLE OPTION. THERE IS NO OBLIGATION TO REPAIR, REPLACE OR REFUND FOR PRODUCTS AS THE RESULT OF (I) ACCIDENT, DISASTER OR EVENT OF FORCE MAJEURE, (II) MISUSE, FAULT OR NEGLIGENCE OF OR BY BUYER, (III) USE OF THE PRODUCTS IN A MANNER FOR WHICH THEY WERE NOT DESIGNED, OR (IV) IMPROPER STORAGE AND HANDLING OF THE PRODUCTS. Unless otherwise expressly stated on the Product or in the documentation accompanying the Product, the Product is intended for research only and is not to be used for any other purpose, including without limitation, unauthorized commercial uses, in vitro diagnostic uses, ex vivo or in vivo therapeutic uses, or any type of consumption by or application to human or animals.