

# MARCO Monoclonal Antibody (PLK-1), PE, eBioscience™

## Product Details

Size	25 Tests
Species Reactivity	Human
Published Species	Human
Host/Isotype	Mouse / IgG3
Recommended Isotype Control	Mouse IgG3 Isotype Control (B10), PE, eBioscience™
Class	Monoclonal
Type	Antibody
Clone	PLK-1
Conjugate	PE
Excitation/Emission Max	565/576 nm
Immunogen	Human alveolar macrophages
Form	Liquid
Concentration	5 µL/Test
Purification	Affinity chromatography
Storage buffer	PBS, pH 7.2, with 0.2% BSA
Contains	0.09% sodium azide
Storage conditions	4° C, store in dark, DO NOT FREEZE!
RRID	AB_2762429

Applications	Tested Dilution	Publications
Immunohistochemistry (IHC)	-	1 Publication
Flow Cytometry (Flow)	5 µL (0.06 µg)/test	1 Publication

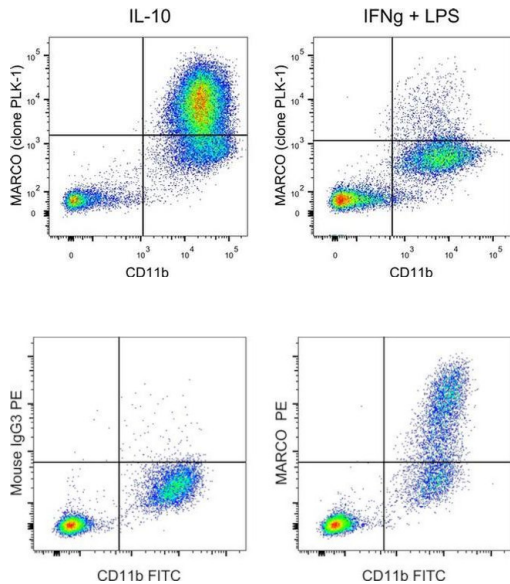
## Product Specific Information

**Description:** This PLK-1 monoclonal antibody recognizes human MARCO, also known as SR-A6 or SCARA2.

**Applications Reported:** This PLK-1 antibody has been reported for use in flow cytometric analysis.

**Applications Tested:** This PLK-1 antibody has been pre-diluted and tested by flow cytometric analysis of human monocyte-derived macrophages. This may be used at 5 µL (0.06 µg) per test. A test is defined as the amount (µg) of antibody that will stain a cell sample in a final volume of 100 µL. Cell number should be determined empirically but can range from 10<sup>5</sup> to 10<sup>8</sup> cells/test.

**Excitation:** 488-561 nm; **Emission:** 578 nm; **Laser:** Blue Laser, Green Laser, Yellow-Green Laser



**MARCO Antibody (12-5447-41)**  
Staining of stimulated human monocyte-derived macrophages. As expected, based on known expression patterns, the PLK-1 clone stains mostly macrophages polarized with IL-10 (left panel) and not macrophages polarized with IFNg and LPS (right panel). Details: Human monocyte-derived macrophages were polarized with either IL-10 or IFNg + LPS for 48 hours. The cells were then stained with MARCO (clone PLK-1) and CD11b (clone ICRF44). Total viable cells were used for analysis. {TM}

**MARCO Antibody (12-5447-41) in Flow**  
Human monocyte derived macrophages were stimulated with IL-10 for 48 hours, and subsequently stained with CD11b Monoclonal Antibody, FITC (Product # 11-0112-82) and Mouse IgG3 kappa Isotype Control, PE (Product # 12-4742-42) (left) or MARCO Monoclonal Antibody, PE (right). Total viable cells were used for analysis, as determined by Fixable Viability Dye eFluor 450 (Product # 65-0863-18).

2 References

Immunohistochemistry (1)

Cell	Year 2020
<b>Single-Cell Analyses Inform Mechanisms of Myeloid-Targeted Therapies in Colon Cancer.</b>	Species Human
"12-5447-42 was used in Immunohistochemistry to identify critical cellular interactions regulating tumor immunity and defines mechanisms underlying myeloid-targeted immunotherapies currently undergoing clinical testing."	
Authors: Zhang L,Li Z,Skrzypczynska KM,Fang Q,Zhang W,O'Brien SA,He Y,Wang L,Zhang Q,Kim A,Gao R,Orf J,Wang T,Sawant D,Kang J,Bhatt D,Lu D,Li CM,Rapaport AS,Perez K,Ye Y,Wang S,Hu X,Ren X,Ouyang W,Shen Z,Egen JG,Zhang Z,Yu X	

Flow Cytometry (1)

Scientific reports	Year 2021
<b>CD276 is an important player in macrophage recruitment into the tumor and an upstream regulator for PAI-1.</b>	
"Published figure using MARCO monoclonal antibody (Product # 12-5447-42) in Flow Cytometry"	
Authors: Durlanik S,Fundel-Clemens K,Viollet C,Huber HJ,Lenter M,Kitt K,Pflanz S	

For Research Use Only. Not for use in diagnostic procedures. Not for resale without express authorization. Products are warranted to operate or perform substantially in conformance with published Product specifications in effect at the time of sale, as set forth in the Production documentation, specifications and/or accompanying package inserts ("Documentation"). No claim of suitability for use in applications regulated by FDA is made. The warranty provided herein is valid only when used by properly trained individuals. Unless otherwise stated in the Documentation, this warranty is limited to one year from date of shipment when the Product is subjected to normal, proper and intended usage. This warranty does not extend to anyone other than the Buyer. Any model or sample furnished to Buyer is merely illustrative of the general type and quality of goods and does not represent that any Product will conform to such model or sample. NO OTHER WARRANTIES, EXPRESS OR IMPLIED, ARE GRANTED INCLUDING WITHOUT LIMITATION, IMPLIED WARRANTIES OF MERCHANTABILITY, FITNESS FOR ANY PARTICULAR PURPOSE, OR NON INFRINGEMENT. BUYER'S EXCLUSIVE REMEDY FOR NON-CONFORMING PRODUCTS DURING THE WARRANTY PERIOD IS LIMITED TO REPAIR, REPLACEMENT OF OR REFUND FOR THE NON-CONFORMING PRODUCT(S) AT SELLER'S SOLE OPTION. THERE IS NO OBLIGATION TO REPAIR, REPLACE OR REFUND FOR PRODUCTS AS THE RESULT OF (I) ACCIDENT, DISASTER OR EVENT OF FORCE MAJEURE, (II) MISUSE, FAULT OR NEGLIGENCE OF OR BY BUYER, (III) USE OF THE PRODUCTS IN A MANNER FOR WHICH THEY WERE NOT DESIGNED, OR (IV) IMPROPER STORAGE AND HANDLING OF THE PRODUCTS. Unless otherwise expressly stated on the Product or in the documentation accompanying the Product, the Product is intended for research only and is not to be used for any other purpose, including without limitation, unauthorized commercial uses, in vitro diagnostic uses, ex vivo or in vivo therapeutic uses, or any type of consumption by or application to human or animals.