

Lymphotoxin beta Receptor Monoclonal Antibody (eBio3C8 (3C8)), PE, eBioscience™

Product Details	
Size	100 µg
Species Reactivity	Mouse
Published Species	Mouse
Host/Isotype	Rat / IgG1, kappa
Recommended Isotype Control	Rat IgG1 kappa Isotype Control (eBRG1), PE, eBioscience™
Class	Monoclonal
Type	Antibody
Clone	eBio3C8 (3C8)
Conjugate	PE
Form	Liquid
Concentration	0.2 mg/mL
Purification	Affinity chromatography
Storage buffer	PBS, pH 7.2, with 0.1% gelatin
Contains	0.09% sodium azide
Storage conditions	4° C, store in dark, DO NOT FREEZE!
RRID	AB_2016713

Applications	Tested Dilution	Publications
Flow Cytometry (Flow)	0.25 µg/test	3 Publications

Product Specific Information

Description: The antibody reacts with mouse lymphotoxin-beta receptor (LTBR). Northern blot analysis of tissues from adult mice showed that expression levels of LTBR mRNA were strong in lung, liver, and kidney, moderate in heart and testes, but weak in brain, thymus, spleen, and lymph nodes. The tumor necrosis factor receptor-related protein is the human receptor for the heterotrimer of lymphotoxin-alpha and lymphotoxin-beta. This LT-alpha/LT-beta heterotrimer (LT-alpha1beta2) is assumed to take part in immunologic reactions by cell-cell contact, but does not bind to either TNFR1 (CD120alpha) or TNFR2 (CD120beta). LTBR is expressed by day 7 embryos, so it has been speculated that the LT-alpha/LT-beta receptor system may also have some function in early embryogenesis.

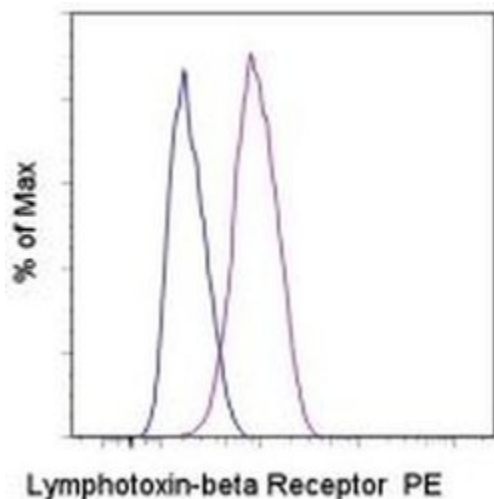
Applications Reported: This eBio3C8 (3C8) antibody has been reported for use in flow cytometric analysis.

Applications Tested: This eBio3C8 (3C8) antibody has been tested by flow cytometric analysis of the NIH/3T3 cell line. This can be used at less than or equal to 0.25 µg per test. A test is defined as the amount (µg) of antibody that will stain a cell sample in a final volume of 100 µL. Cell number should be determined empirically but can range from 10e5 to 10e8 cells/test. It is recommended that the antibody be carefully titrated for optimal performance in the assay of interest.

Excitation: 488-561 nm; Emission: 578 nm; Laser: Blue Laser, Green Laser, Yellow-Green Laser.

Filtration: 0.2 µm post-manufacturing filtered.

Product Images For Lymphotoxin beta Receptor Monoclonal Antibody (eBio3C8 (3C8)), PE, eBioscience™



Lymphotoxin beta Receptor Antibody (12-5671-82) in Flow

Staining of NIH/3T3 cell line with 0.125 µg of Rat IgG1 kappa Isotype Control PE (Product # 12-4301-82) (blue histogram) or 0.125 µg of Anti-Mouse Lymphotoxin beta Receptor PE (purple histogram). Total viable cells were used for analysis.

3 References

Flow Cytometry (3)

Cell reports

Regulatory T Cells Condition Lymphatic Endothelia for Enhanced Transendothelial Migration.

"12-5671 was used in Flow cytometry/Cell sorting to demonstrate the role of regulatory T cells in enhancing leukocyte migration through endothelial barriers."

Authors: Piao W, Xiong Y, Li L, Saxena V, Smith KD, Hippen KL, Paluskievicz C, Willsonshirkey M, Blazar BR, Abdi R, Bromberg JS

Species
Mouse

Dilution
Not Cited

Year
2020

Nature communications

Lymphotoxin fine-tunes T cell clonal deletion by regulating thymic entry of antigen-presenting cells.

"Published figure using Lymphotoxin beta Receptor monoclonal antibody (Product # 12-5671-82) in Flow Cytometry"

Authors: Lopes N, Charaix J, Cédile O, Sergé A, Irla M

Species
Not Applicable

Dilution
Not Cited

Year
2018

[View more Flow references on thermofisher.com](https://thermofisher.com)

For Research Use Only. Not for use in diagnostic procedures. Not for resale without express authorization. Products are warranted to operate or perform substantially in conformance with published Product specifications in effect at the time of sale, as set forth in the Production documentation, specifications and/or accompanying package inserts ("Documentation"). No claim of suitability for use in applications regulated by FDA is made. The warranty provided herein is valid only when used by properly trained individuals. Unless otherwise stated in the Documentation, this warranty is limited to one year from date of shipment when the Product is subjected to normal, proper and intended usage. This warranty does not extend to anyone other than the Buyer. Any model or sample furnished to Buyer is merely illustrative of the general type and quality of goods and does not represent that any Product will conform to such model or sample. NO OTHER WARRANTIES, EXPRESS OR IMPLIED, ARE GRANTED INCLUDING WITHOUT LIMITATION, IMPLIED WARRANTIES OF MERCHANTABILITY, FITNESS FOR ANY PARTICULAR PURPOSE, OR NON-INFRINGEMENT. BUYER'S EXCLUSIVE REMEDY FOR NON-CONFORMING PRODUCTS DURING THE WARRANTY PERIOD IS LIMITED TO REPAIR, REPLACEMENT OF OR REFUND FOR THE NON-CONFORMING PRODUCT(S) AT SELLER'S SOLE OPTION. THERE IS NO OBLIGATION TO REPAIR, REPLACE OR REFUND FOR PRODUCTS AS THE RESULT OF (I) ACCIDENT, DISASTER OR EVENT OF FORCE MAJEURE, (II) MISUSE, FAULT OR NEGLIGENCE OF OR BY BUYER, (III) USE OF THE PRODUCTS IN A MANNER FOR WHICH THEY WERE NOT DESIGNED, OR (IV) IMPROPER STORAGE AND HANDLING OF THE PRODUCTS. Unless otherwise expressly stated on the Product or in the documentation accompanying the Product, the Product is intended for research only and is not to be used for any other purpose, including without limitation, unauthorized commercial uses, in vitro diagnostic uses, ex vivo or in vivo therapeutic uses, or any type of consumption by or application to human or animals.