

CD249 (BP-1) Monoclonal Antibody (6C3), PE, eBioscience™

Product Details	
Size	200 µg
Species Reactivity	Mouse
Published Species	Mouse
Host/Isotype	Rat / IgG2a, kappa
Recommended Isotype Control	Rat IgG2a kappa Isotype Control (eBR2a), PE, eBioscience™
Class	Monoclonal
Type	Antibody
Clone	6C3
Conjugate	PE
Excitation/Emission Max	565/576 nm
Form	Liquid
Concentration	0.2 mg/mL
Purification	Affinity chromatography
Storage buffer	PBS, pH 7.2
Contains	0.09% sodium azide
Storage conditions	4° C, store in dark, DO NOT FREEZE!
RRID	AB_466016

Applications	Tested Dilution	Publications
Flow Cytometry (Flow)	1 µg/test	15 Publications

Product Specific Information

Description: The 6C3 monoclonal antibody reacts with mouse BP-1, also known as Ly-51 and 6C3 antigen. BP-1 is a 140 kDa type II transmembrane protein that is present on the surface as a disulfide-linked homodimer. This molecule is an enzyme with aminopeptidase A (APA) activity and is expressed by bone marrow stromal cells, thymic cortical epithelial cells and at early stages of mouse B cell development, on pre-B cells. The low level of BP-1 expression on pre-B cells can be upregulated in the presence of IL-7.

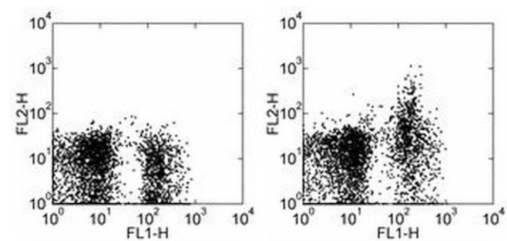
Applications Reported: The 6C3 antibody has been reported for use in flow cytometric analysis.

Applications Tested: The 6C3 antibody has been tested by flow cytometric analysis of mouse bone marrow cells. This can be used at less than or equal to 1 µg per test. A test is defined as the amount (µg) of antibody that will stain a cell sample in a final volume of 100 µL. Cell number should be determined empirically but can range from 10⁵ to 10⁸ cells/test. It is recommended that the antibody be carefully titrated for optimal performance in the assay of interest.

Excitation: 488-561 nm; **Emission:** 578 nm; **Laser:** Blue Laser, Green Laser, Yellow-Green Laser.

Filtration: 0.2 µm post-manufacturing filtered.

Product Images For CD249 (BP-1) Monoclonal Antibody (6C3), PE, eBioscience™



CD249 (BP-1) Antibody (12-5891-83) in Flow
Staining of C57BL/6 bone marrow cells with Anti-Human/Mouse CD45R (B220) FITC (Product # 11-0452-82) and 0.5 µg of Rat IgG2a kappa Isotype Control PE (Product # 12-4321-80) (left) or 0.5 µg of Anti-Mouse BP-1 PE (right). Samples were pre-incubated with Anti-Mouse CD16/CD32 Purified (Product # 14-0161-82). Total viable cells were used for analysis.

15 References

Flow Cytometry (15)

Nature communications	Year 2023
Embryonic keratin19⁺ progenitors generate multiple functionally distinct progeny to maintain epithelial diversity in the adult thymus medulla.	
"Published figure using CD249 (BP-1) monoclonal antibody (Product # 12-5891-82) in Flow Cytometry"	
Authors: Lucas B,White AJ,Klein F,Veiga-Villauriz C,Handel A,Bacon A,Cosway EJ,James KD,Parnell SM,Ohigashi I, Takahama Y,Jenkinson WE,Hollander GA,Lu WY,Anderson G	
iScience	Year 2020
Epigenetic Protection of Vertebrate Lymphoid Progenitor Cells by Dnmt1.	Species Mouse
"12-5891 was used in Flow cytometry/Cell sorting to identify new recessive dnmt1 alleles in medaka and zebrafish and, guided by the structures of mutant proteins, generated a recessive variant of mouse Dnmt1."	
Authors: Iwanami N,Takeshita K,Lawir DF,Suetake I,Tajima S,Sikora K,Trancoso I,ÓMeara C,Siamishi I,Takahama Y, Furutani-Seiki M,Kondoh H,Yonezawa Y,Schorpp M,Boehm T	

[View more Flow references on thermofisher.com](#)

More applications with references on thermofisher.com

For Research Use Only. Not for use in diagnostic procedures. Not for resale without express authorization. Products are warranted to operate or perform substantially in conformance with published Product specifications in effect at the time of sale, as set forth in the Production documentation, specifications and/or accompanying package inserts ("Documentation"). No claim of suitability for use in applications regulated by FDA is made. The warranty provided herein is valid only when used by properly trained individuals. Unless otherwise stated in the Documentation, this warranty is limited to one year from date of shipment when the Product is subjected to normal, proper and intended usage. This warranty does not extend to anyone other than the Buyer. Any model or sample furnished to Buyer is merely illustrative of the general type and quality of goods and does not represent that any Product will conform to such model or sample. NO OTHER WARRANTIES, EXPRESS OR IMPLIED, ARE GRANTED INCLUDING WITHOUT LIMITATION, IMPLIED WARRANTIES OF MERCHANTABILITY, FITNESS FOR ANY PARTICULAR PURPOSE, OR NON INFRINGEMENT. BUYER'S EXCLUSIVE REMEDY FOR NON-CONFORMING PRODUCTS DURING THE WARRANTY PERIOD IS LIMITED TO REPAIR, REPLACEMENT OF OR REFUND FOR THE NON-CONFORMING PRODUCT(S) AT SELLER'S SOLE OPTION. THERE IS NO OBLIGATION TO REPAIR, REPLACE OR REFUND FOR PRODUCTS AS THE RESULT OF (I) ACCIDENT, DISASTER OR EVENT OF FORCE MAJEURE, (II) MISUSE, FAULT OR NEGLIGENCE OF OR BY BUYER, (III) USE OF THE PRODUCTS IN A MANNER FOR WHICH THEY WERE NOT DESIGNED, OR (IV) IMPROPER STORAGE AND HANDLING OF THE PRODUCTS. Unless otherwise expressly stated on the Product or in the documentation accompanying the Product, the Product is intended for research only and is not to be used for any other purpose, including without limitation, unauthorized commercial uses, in vitro diagnostic uses, ex vivo or in vivo therapeutic uses, or any type of consumption by or application to human or animals.