

# MHC Class I (H-2Kd) Monoclonal Antibody (SF1-1.1.1), PE, eBioscience™

Product Details	
Size	100 µg
Species Reactivity	Mouse
Published Species	Artificial Control, Mouse
Host/Isotype	Mouse / IgG2a, kappa
Recommended Isotype Control	Mouse IgG2a kappa Isotype Control (eBM2a), PE, eBioscience™
Class	Monoclonal
Type	Antibody
Clone	SF1-1.1.1
Conjugate	PE
Form	Liquid
Concentration	0.2 mg/mL
Purification	Affinity chromatography
Storage buffer	PBS, pH 7.2, with 0.1% gelatin
Contains	0.09% sodium azide
Storage Conditions	4° C, store in dark, DO NOT FREEZE!
RRID	AB_2043875

Applications	Tested Dilution	Publications
Flow Cytometry (Flow)	0.25 µg/test	8 Publications

## Product Specific Information

**Description:** This SF1-1.1.1 monoclonal antibody reacts with the H-2Kd MHC class I alloantigen. H-2Kd is involved in antigen presentation to T cells expressing CD3/TCR and CD8. Reactivity to other haplotypes (e.g. b, j, k, p, q, s, and v) has not been observed.

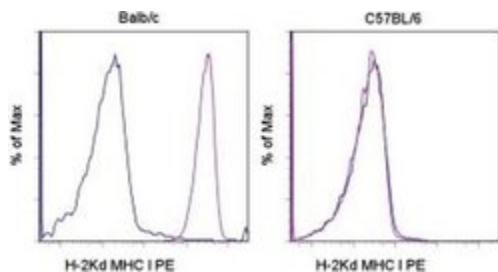
**Applications Reported:** This SF1-1.1.1 antibody has been reported for use in flow cytometric analysis.

**Applications Tested:** This SF1-1.1.1 antibody has been tested by flow cytometric analysis of mouse splenocytes. This can be used at less than or equal to 0.25 µg per test. A test is defined as the amount (µg) of antibody that will stain a cell sample in a final volume of 100 µL. Cell number should be determined empirically but can range from 10<sup>5</sup> to 10<sup>8</sup> cells/test. It is recommended that the antibody be carefully titrated for optimal performance in the assay of interest.

**Excitation:** 488-561 nm; **Emission:** 578 nm; **Laser:** Blue Laser, Green Laser, Yellow-Green Laser.

**Filtration:** 0.2 µm post-manufacturing filtered.

## Product Images For MHC Class I (H-2Kd) Monoclonal Antibody (SF1-1.1.1), PE, eBioscience™



### MHC Class I (H-2Kd) Antibody (12-5957-82) in Flow

Staining of BALB/c (left) and C57BL/6 (right) splenocytes with 0.125 µg of Mouse IgG2a kappa Isotype Control PE (Product # 12-4724-81) (blue histogram) or 0.125 µg of Anti-Mouse MHC Class I (H-2Kd) PE (purple histogram). Total viable cells were used for analysis.

[View more figures on thermofisher.com](#)

## 8 References

### Flow Cytometry (8)

Journal of immunology (Baltimore, Md. : 1950)

#### Mouse mast cell protease-6 and MHC are involved in the development of experimental asthma.

"12-5957 was used in Flow cytometry/Cell sorting to compare the immune responses of BALB/c mice to mMCP-6(-/-) and mMCP-6(-/-)/H-2bc mice in a mouse model of experimental asthma."

Authors: Cui Y,Dahlin JS,Feinstein R,Bankova LG,Xing W,Shin K,Gurish MF,Hallgren J

**Species**  
Mouse

**Dilution**  
Not Cited

**Year**  
2014

Immunity

#### Quiescent Tissue Stem Cells Evade Immune Surveillance.

"12-5957 was used in Flow cytometry/Cell sorting to identify a link between stem cell quiescence, antigen presentation, and immune evasion."

Authors: Agudo J,Park ES,Rose SA,Alibo E,Sweeney R,Dhainaut M,Kobayashi KS,Sachidanandam R,Baccarini A,Merad M,Brown BD

**Species**  
Mouse

**Dilution**  
Not Cited

**Year**  
2018

[View more Flow references on thermofisher.com](#)

## More applications with references on thermofisher.com

For Research Use Only. Not for use in diagnostic procedures. Not for resale without express authorization. Products are warranted to operate or perform substantially in conformance with published Product specifications in effect at the time of sale, as set forth in the Production documentation, specifications and/or accompanying package inserts ("Documentation"). No claim of suitability for use in applications regulated by FDA is made. The warranty provided herein is valid only when used by properly trained individuals. Unless otherwise stated in the Documentation, this warranty is limited to one year from date of shipment when the Product is subjected to normal, proper and intended usage. This warranty does not extend to anyone other than the Buyer. Any model or sample furnished to Buyer is merely illustrative of the general type and quality of goods and does not represent that any Product will conform to such model or sample. NO OTHER WARRANTIES, EXPRESS OR IMPLIED, ARE GRANTED INCLUDING WITHOUT LIMITATION, IMPLIED WARRANTIES OF MERCHANTABILITY, FITNESS FOR ANY PARTICULAR PURPOSE, OR NON INFRINGEMENT. BUYER'S EXCLUSIVE REMEDY FOR NON-CONFORMING PRODUCTS DURING THE WARRANTY PERIOD IS LIMITED TO REPAIR, REPLACEMENT OF OR REFUND FOR THE NON-CONFORMING PRODUCT(S) AT SELLER'S SOLE OPTION. THERE IS NO OBLIGATION TO REPAIR, REPLACE OR REFUND FOR PRODUCTS AS THE RESULT OF (I) ACCIDENT, DISASTER OR EVENT OF FORCE MAJEURE, (II) MISUSE, FAULT OR NEGLIGENCE OF OR BY BUYER, (III) USE OF THE PRODUCTS IN A MANNER FOR WHICH THEY WERE NOT DESIGNED, OR (IV) IMPROPER STORAGE AND HANDLING OF THE PRODUCTS. Unless otherwise expressly stated on the Product or in the documentation accompanying the Product, the Product is intended for research only and is not to be used for any other purpose, including without limitation, unauthorized commercial uses, in vitro diagnostic uses, ex vivo or in vivo therapeutic uses, or any type of consumption by or application to human or animals.