

# IL-6 Monoclonal Antibody (MP5-20F3), PE, eBioscience™

Product Details	
Size	100 µg
Species Reactivity	Mouse
Published Species	Mouse
Host/Isotope	Rat / IgG1, kappa
Recommended Isotype Control	Rat IgG1 kappa Isotype Control (eBRG1), PE, eBioscience™
Class	Monoclonal
Type	Antibody
Clone	MP5-20F3
Conjugate	PE
Form	Liquid
Concentration	0.2 mg/mL
Purification	Affinity chromatography
Storage buffer	PBS, pH 7.2, with 0.1% gelatin
Contains	0.09% sodium azide
Storage Conditions	4° C, store in dark, DO NOT FREEZE!
RRID	AB_466165

Applications	Tested	Dilution	Published
Flow Cytometry (Flow)	✓	0.25 µg/test	7 Publications

## Product Specific Information

**Description:** The MP5-20F3 antibody reacts with mouse interleukin-6 (IL-6). The MP5-20F3 antibody is a neutralizing antibody. Mouse IL-6 (also known as B Cell Stimulating Factor, BCSF, and BSF-2) is a 21-28 kDa factor produced by a variety of cell types, including monocytes, fibroblasts and endothelial cells. Upon stimulation, macrophages, T, B, mast, and glial cells, eosinophils, keratinocytes and granulocytes also secrete IL-6. This pleiotrophic cytokine influences the antigen-specific immune response, inflammatory response, and the development of neurons, and is a major mediator of the acute phase reaction.

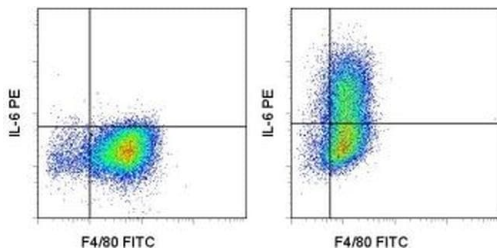
**Applications Reported:** This MP5-20F3 antibody has been reported for use in intracellular staining followed by flow cytometric analysis.

**Applications Tested:** This MP5-20F3 antibody is offered in 2 formats: - µg size: has been tested by intracellular staining and flow cytometric analysis of stimulated peritoneal macrophages. This can be used at less than or equal to 0.25 µg per test. A test is defined as the amount (µg) of antibody that will stain a cell sample in a final volume of 100 µL. Cell number should be determined empirically but can range from 10<sup>5</sup> to 10<sup>8</sup> cells/test. It is recommended that the antibody be carefully titrated for optimal performance in the assay of interest. - test size: has been pre-titrated and tested by intracellular staining and flow cytometric analysis of stimulated peritoneal macrophages. This can be used at test size: 5 µL (0.125 µg) per test. The pre-titrated test size contains BSA and/or gelatin for protein stabilization.

Excitation: 488-561 nm; Emission: 578 nm; Laser: Blue Laser, Green Laser, Yellow-Green Laser.

Filtration: 0.2 µm post-manufacturing filtered.

## Product Images For IL-6 Monoclonal Antibody (MP5-20F3), PE, eBioscience™



### IL-6 Antibody (12-7061-82) in Flow

Mouse thioglycolate-induced peritoneal exudate cells were stimulated with LPS in the presence of Brefeldin A for 6 hours (right) or unstimulated (left). The cells were surface stained with Anti-Mouse F4/80 Antigen FITC (Product # 11-4801-82) and intracellularly stained with Anti-Mouse IL-6 PE.

## 7 References

### Flow Cytometry (7)

**Journal of cerebral blood flow and metabolism : official journal of the International Society of Cerebral Blood Flow and Metabolism**

#### Depletion of microglia exacerbates postischemic inflammation and brain injury.

"Published figure using IL-6 monoclonal antibody (Product # 12-7061-82) in Flow Cytometry"

Authors: Jin WN, Shi SX, Li Z, Li M, Wood K, Gonzales RJ, Liu Q

#### Species

Mouse  
Not Applicable

#### Dilution

Not Cited  
Not Cited

#### Year

2017

PloS one

#### Intestinal barrier dysfunction develops at the onset of experimental autoimmune encephalomyelitis, and can be induced by adoptive transfer of auto-reactive T cells.

"12-7061 was used in Flow cytometry/Cell sorting to show that disruption of intestinal homeostasis is an early and immune-mediated event in experimental autoimmune encephalomyelitis."

Authors: Nouri M, Bredberg A, Weström B, Lavasani S

#### Species

Mouse

#### Dilution

Not Cited

#### Year

2015

[View more Flow references on thermofisher.com](#)

## More applications with references on thermofisher.com

For Research Use Only. Not for use in diagnostic procedures. Not for resale without express authorization. Products are warranted to operate or perform substantially in conformance with published Product specifications in effect at the time of sale, as set forth in the Production documentation, specifications and/or accompanying package inserts ("Documentation"). No claim of suitability for use in applications regulated by FDA is made. The warranty provided herein is valid only when used by properly trained individuals. Unless otherwise stated in the Documentation, this warranty is limited to one year from date of shipment when the Product is subjected to normal, proper and intended usage. This warranty does not extend to anyone other than the Buyer. Any model or sample furnished to Buyer is merely illustrative of the general type and quality of goods and does not represent that any Product will conform to such model or sample. NO OTHER WARRANTIES, EXPRESS OR IMPLIED, ARE GRANTED INCLUDING WITHOUT LIMITATION, IMPLIED WARRANTIES OF MERCHANTABILITY, FITNESS FOR ANY PARTICULAR PURPOSE, OR NON-INFRINGEMENT. BUYER'S EXCLUSIVE REMEDY FOR NON-CONFORMING PRODUCTS DURING THE WARRANTY PERIOD IS LIMITED TO REPAIR, REPLACEMENT OF OR REFUND FOR THE NON-CONFORMING PRODUCT(S) AT SELLER'S SOLE OPTION. THERE IS NO OBLIGATION TO REPAIR, REPLACE OR REFUND FOR PRODUCTS AS THE RESULT OF (I) ACCIDENT, DISASTER OR EVENT OF FORCE MAJEURE, (II) MISUSE, FAULT OR NEGLIGENCE OF OR BY BUYER, (III) USE OF THE PRODUCTS IN A MANNER FOR WHICH THEY WERE NOT DESIGNED, OR (IV) IMPROPER STORAGE AND HANDLING OF THE PRODUCTS. Unless otherwise expressly stated on the Product or in the documentation accompanying the Product, the Product is intended for research only and is not to be used for any other purpose, including without limitation, unauthorized commercial uses, in vitro diagnostic uses, ex vivo or in vivo therapeutic uses, or any type of consumption by or application to human or animals.