

# CCL2 (MCP-1) Monoclonal Antibody (5D3-F7), PE, eBioscience™

Product Details	
Size	25 µg
Species Reactivity	Human
Published Species	Human
Host/Isotype	Mouse / IgG1, kappa
Recommended Isotype Control	Mouse IgG1 kappa Isotype Control (P3.6.2.8.1), PE, eBioscience™
Class	Monoclonal
Type	Antibody
Clone	5D3-F7
Conjugate	PE
Excitation/Emission Max	565/576 nm
Form	Liquid
Concentration	0.2 mg/mL
Purification	Affinity chromatography
Storage buffer	PBS, pH 7.2
Contains	0.09% sodium azide
Storage conditions	4° C, store in dark, DO NOT FREEZE!
RRID	AB_2572652

Applications	Tested Dilution	Publications
Flow Cytometry (Flow)	0.125 µg/test	1 Publication

## Product Specific Information

**Description:** The 5D3-F7 antibody reacts with human, cynomolgus, and rhesus monkey monocyte chemoattractant protein-1 (MCP-1), also known as monocyte chemotactic and activating factor (MCAF) and CCL2. MCP-1 is a CC chemokine which presents as a dimer. Derived from monocytes and vascular endothelial cells, it exerts chemoattractant activity on a variety of cell types, such as monocytes, basophils, T cells and NK cells via chemokine receptors such as CCR2, CCR5, and CCR10.

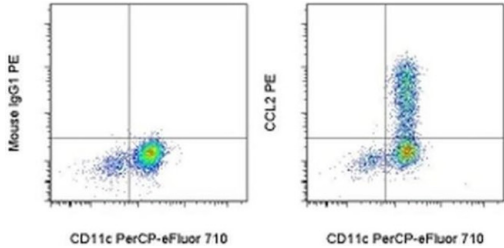
**Applications Reported:** This 5D3-F7 antibody has been reported for use in intracellular staining followed by flow cytometric analysis.

**Applications Tested:** This 5D3-F7 antibody has been tested by intracellular staining and flow cytometric analysis of stimulated normal human peripheral blood cells using the Intracellular Fixation & Permeabilization Buffer Set (cat. 88-8824) and protocol. Please refer to Best Protocols: Protocol A: Two step protocol for (cytoplasmic) intracellular proteins located under the Resources Tab online. This can be used at less than or equal to 0.125 µg per test. A test is defined as the amount (µg) of antibody that will stain a cell sample in a final volume of 100 µL. Cell number should be determined empirically but can range from 10<sup>5</sup> to 10<sup>8</sup> cells/test. It is recommended that the antibody be carefully titrated for optimal performance in the assay of interest.

**Excitation:** 488-561 nm; **Emission:** 578 nm; **Laser:** Blue Laser, Green Laser, Yellow-Green Laser.

**Filtration:** 0.2 µm post-manufacturing filtered.

## Product Images For CCL2 (MCP-1) Monoclonal Antibody (5D3-F7), PE, eBioscience™



### CCL2 (MCP-1) Antibody (12-7099-80) in Flow

Normal human peripheral blood cells were stimulated with LPS for 5 hours in the presence of Monensin Solution (Product # 00-4505-51). The cells were intracellularly stained with Anti-Human CD11c PerCP-eFluor® 710 (Product # 46-0116-42) and 0.06 µg of Mouse IgG1 K Isotype Control PE (Product # 12-4714-81) (left) or 0.06 µg of Anti-Human CCL2 (MCP-1) PE (right) using the Intracellular Fixation & Permeabilization Buffer Set (Product # 88-8824-00) and protocol. Cells in the monocyte gate were used for analysis.

## 1 Reference

## Flow Cytometry (1)

**Oncotarget**

## Acidic pH reduces VEGF-mediated endothelial cell responses by downregulation of VEGFR-2; relevance for anti-angiogenic therapies.

"12-7099 was used in Flow cytometry/Cell sorting to show that endothelial cells prosper independently of VEGF in acidic conditions partly as a consequence of decreased VEGFR-2 expression."

Authors: Faes S,Uldry E,Planche A,Santoro T,Pythoud C,Demartines N,Dormond O

Year  
2016

**Species**  
Human

**Dilution**  
1:100

For Research Use Only. Not for use in diagnostic procedures. Not for use without express authorization. Products are warranted to operate or perform substantially in conformance with published Product specifications in effect at the time of sale, as set forth in the Production documentation and/or accompanying package inserts ("Documentation"). No claim of suitability for use in applications regulated by FDA is made. The warranty provided herein is valid only when used by properly trained individuals. Unless otherwise stated in the Documentation, this warranty is limited to one year from date of shipment when the Product is subjected to normal, proper and intended usage. This warranty does not extend to anyone other than the Buyer. Any model or sample furnished to Buyer is merely illustrative of the general type and quality of goods and does not represent that any Product will conform to such model or sample. NO OTHER WARRANTIES, EXPRESS OR IMPLIED, ARE GRANTED INCLUDING WITHOUT LIMITATION, IMPLIED WARRANTIES OF MERCHANTABILITY, FITNESS FOR ANY PARTICULAR PURPOSE, OR NON-INFRINGEMENT. BUYER'S EXCLUSIVE REMEDY FOR NON-CONFORMING PRODUCTS DURING THE WARRANTY PERIOD IS LIMITED TO REPAIR, REPLACEMENT OF OR REFUND FOR THE NON-CONFORMING PRODUCT(S) AT SELLER'S SOLE OPTION. THERE IS NO OBLIGATION TO REPAIR, REPLACE OR REFUND FOR PRODUCTS AS THE RESULT OF (I) ACCIDENT, DISASTER OR EVENT OF FORCE MAJEURE, (II) MISUSE, FAULT OR NEGLIGENCE OF OR BY BUYER, (III) USE OF THE PRODUCTS IN A MANNER FOR WHICH THEY WERE NOT DESIGNED, OR (IV) IMPROPER STORAGE AND HANDLING OF THE PRODUCTS. Unless otherwise expressly stated on the Product or in the documentation accompanying the Product, the Product is intended for research only and is not to be used for any other purpose, including without limitation, unauthorized commercial uses, in vitro diagnostic uses, ex vivo or in vivo therapeutic uses, or any type of consumption by or application to human or animals.