

CD338 (ABCG2) Monoclonal Antibody (5D3), PE, eBioscience™

Product Details	
Size	100 Tests
Species Reactivity	Human
Published Species	Dog, Pig, Human, Mouse
Host/Isotype	Mouse / IgG2b, kappa
Recommended Isotype Control	Mouse IgG2b kappa Isotype Control (eBMG2b), PE, eBioscience™
Class	Monoclonal
Type	Antibody
Clone	5D3
Conjugate	PE
Excitation/Emission Max	565/576 nm
Form	Liquid
Concentration	5 µL/Test
Purification	Affinity chromatography
Storage buffer	PBS, pH 7.2, with 0.2% BSA
Contains	0.09% sodium azide
Storage conditions	4° C, store in dark, DO NOT FREEZE!
RRID	AB_10854716

Applications	Tested Dilution	Publications
Immunohistochemistry (IHC)	-	1 Publication
Immunocytochemistry (ICC/IF)	-	1 Publication
Flow Cytometry (Flow)	5 µL (0.25 µg)/test	21 Publications

Product Specific Information

Description: The 5D3 monoclonal antibody reacts with the extracellular portion of the human ABCG2 protein, also known as Bcrp1 and MXR. The ABCG2 gene, a member of the multi-drug resistance (MDR) family, is highly expressed on primitive 'side-population' (SP) stem cells, which are defined by the efflux of fluorescent dyes such as Rhodamine 123 and Hoechst 33342. In the bone marrow, about 0.05% of cells display the low fluorescence and are highly enriched for repopulating cells. The SP cells, which express low or undetectable levels of CD34, have been identified in multiple species. In addition, expression of ABCG2 appears to be highly conserved.

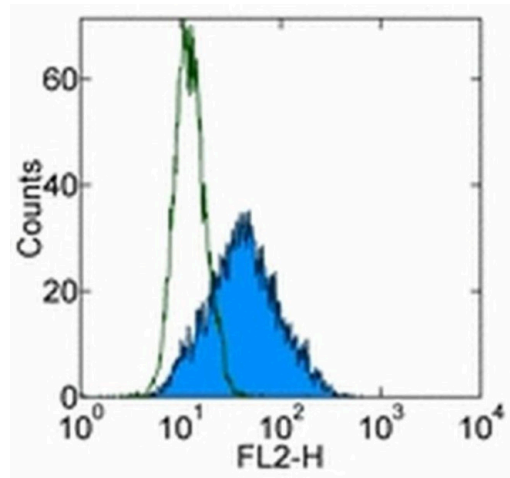
Applications Reported: The 5D3 antibody has been reported for use in flow cytometric analysis.

Applications Tested: This 5D3 antibody is tested by flow cytometric analysis of ABCG2 transfected cells and peripheral blood cells. It is offered in 2 formats: - µg size: has been tested by flow cytometric analysis of ABCG2 transfectant cells and peripheral blood. This can be used at less than or equal to 0.5 µg per test. A test is defined as the amount (µg) of antibody that will stain a cell sample in a final volume of 100 µL. Cell number should be determined empirically but can range from 10⁵ to 10⁸ cells/test. It is recommended that the antibody be carefully titrated for optimal performance in the assay of interest. - test size: has been pre-titrated and tested by flow cytometric analysis of ABCG2 transfected cells and peripheral blood cells. This can be used at 5 µL (0.25 µg) per test. A test is defined as the amount (µg) of antibody that will stain a cell sample in a final volume of 100 µL. Cell number should be determined empirically but can range from 10⁵ to 10⁸ cells/test.

Excitation: 488-561 nm; Emission: 578 nm; Laser: Blue Laser, Green Laser, Yellow-Green Laser.

Filtration: 0.2 µm post-manufacturing filtered.

Product Images For CD338 (ABCG2) Monoclonal Antibody (5D3), PE, eBioscience™



CD338 (ABCG2) Antibody (12-8888-42) in Flow
Staining of human CD338-transfected cells with Mouse IgG2b K Isotype Control PE (Product # 12-4732-81) (open histogram) or Anti-Human CD338 (ABCG2) PE (filled histogram). Total viable cells were used for analysis.

[View more figures on thermofisher.com](https://thermofisher.com)

Immunohistochemistry (1)

<p>PloS one</p> <p>Human prostate side population cells demonstrate stem cell properties in recombination with urogenital sinus mesenchyme.</p> <p>"12-8888 was used in Immunohistochemistry to show that the ABCG2 expressing side population from freshly digested prostate tissue is enriched for prostate stem cells."</p> <p>Authors: Foster BA,Gangavarapu KJ,Mathew G,Azabdaftari G,Morrison CD,Miller A,Huss WJ</p>	<p>Year 2013</p> <p>Species Human</p>
--	---

Immunocytochemistry (1)

<p>Molecular pharmacology</p> <p>Structural determinants of imidazoacridinones facilitating antitumor activity are crucial for substrate recognition by ABCG2.</p> <p>"12-8888 was used in Immunofluorescence to demonstrate that the imidazoacridinone (IA) determinants mediating cytotoxicity also facilitate ABCG2-dependent drug efflux and IA resistance."</p> <p>Authors: Bram EE,Adar Y,Mesika N,Sabisz M,Skladanowski A,Assaraf YG</p>	<p>Year 2009</p> <p>Species Human</p> <p>Dilution 1:100</p>
--	---

Flow Cytometry (21)

<p>F1000Research</p> <p>A double blinded, placebo-controlled pilot study to examine reduction of CD34 +/CD117 +/CD133 + lymphoma progenitor cells and duration of remission induced by neoadjuvant valspodar in dogs with large B-cell lymphoma.</p> <p>"12-8888 was used in Flow cytometry/Cell sorting to examine whether ABCB1 would reduce lymphoma progenitor cells, and extend the length of remission in dogs with therapy naive large B-cell lymphoma."</p> <p>Authors: Ito D,Childress M,Mason N,Winter A,O'Brien T,Henson M,Borgatti A,Lewellen M,Krick E,Stewart J,Lahrman S, Rajwa B,Scott MC,Seelig D,Koopmeiners J,Ruetz S,Modiano J</p>	<p>Year 2021</p> <p>Species Dog</p>
<p>Neoplasia (New York, N.Y.)</p> <p>CBP-mediated Wnt3a/-catenin signaling promotes cervical oncogenesis initiated by Piwil2.</p> <p>"Published figure using CD338 (ABCG2) monoclonal antibody (Product # 12-8888-42) in Flow Cytometry"</p> <p>Authors: Feng D,Yan K,Liang H,Liang J,Wang W,Yu H,Zhou Y,Zhao W,Dong Z,Ling B</p>	<p>Year 2021</p> <p>Species Human</p>

[View more Flow references on thermofisher.com](#)

More applications with references on thermofisher.com

For Research Use Only. Not for use in diagnostic procedures. Not for resale without express authorization. Products are warranted to operate or perform substantially in conformance with published Product specifications in effect at the time of sale, as set forth in the Production documentation, specifications and/or accompanying package inserts ("Documentation"). No claim of suitability for use in applications regulated by FDA is made. The warranty provided herein is valid only when used by properly trained individuals. Unless otherwise stated in the Documentation, this warranty is limited to one year from date of shipment when the Product is subjected to normal, proper and intended usage. This warranty does not extend to anyone other than the Buyer. Any model or sample furnished to Buyer is merely illustrative of the general type and quality of goods and does not represent that any Product will conform to such model or sample. NO OTHER WARRANTIES, EXPRESS OR IMPLIED, ARE GRANTED INCLUDING WITHOUT LIMITATION, IMPLIED WARRANTIES OF MERCHANTABILITY, FITNESS FOR ANY PARTICULAR PURPOSE, OR NON INFRINGEMENT. BUYER'S EXCLUSIVE REMEDY FOR NON-CONFORMING PRODUCTS DURING THE WARRANTY PERIOD IS LIMITED TO REPAIR, REPLACEMENT OF OR REFUND FOR THE NON-CONFORMING PRODUCT(S) AT SELLER'S SOLE OPTION. THERE IS NO OBLIGATION TO REPAIR, REPLACE OR REFUND FOR PRODUCTS AS THE RESULT OF (I) ACCIDENT, DISASTER OR EVENT OF FORCE MAJEURE, (II) MISUSE, FAULT OR NEGLIGENCE OF OR BY BUYER, (III) USE OF THE PRODUCTS IN A MANNER FOR WHICH THEY WERE NOT DESIGNED, OR (IV) IMPROPER STORAGE AND HANDLING OF THE PRODUCTS. Unless otherwise expressly stated on the Product or in the documentation accompanying the Product, the Product is intended for research only and is not to be used for any other purpose, including without limitation, unauthorized commercial uses, in vitro diagnostic uses, ex vivo or in vivo therapeutic uses, or any type of consumption by or application to human or animals.