

CD200 Receptor Monoclonal Antibody (OX108), PE, eBioscience™

Product Details	
Size	100 Tests
Species Reactivity	Human
Published Species	Rat, Human
Host/Isotype	Mouse / IgG1, kappa
Recommended Isotype Control	Mouse IgG1 kappa Isotype Control (P3.6.2.8.1), PE, eBioscience™
Class	Monoclonal
Type	Antibody
Clone	OX108
Conjugate	PE
Excitation/Emission Max	565/576 nm
Form	Liquid
Concentration	5 µL/Test
Purification	Affinity chromatography
Storage buffer	PBS, pH 7.2, with 0.2% BSA
Contains	0.09% sodium azide
Storage conditions	4° C, store in dark, DO NOT FREEZE!
RRID	AB_10717665

Applications	Tested Dilution	Publications
Flow Cytometry (Flow)	5 µL (0.25 µg)/test	6 Publications

Product Specific Information

Description: The monoclonal antibody OX108 recognizes human CD200R also known as OX2. CD200R is an inhibitory receptor with a similar structure as its ligand, CD200, yet lacks an ITIM domain typically found in inhibitory receptors. Instead the CD200R cytoplasmic domain contains a novel phosphotyrosine binding domain, NPXY, which after binding SHIP inhibits ERK, JNK and MAPK p38 pathways. In activated macrophages signaling results in inhibition of TNFalpha secretion. Isoforms of CD200R have been identified and are thought to play a major role in differentiation, especially in regards to tolerogenic DCs.

Expression is restricted to hematopoietic cells: myeloid cells (monocytes, macrophages, DCs, neutrophils, mast cells and basophils) and a subset of T lymphocytes as well as langerhans (LC) cells and dendritic epidermal T cells. The epitope of OX108 is thought to be near the binding site of CD200.

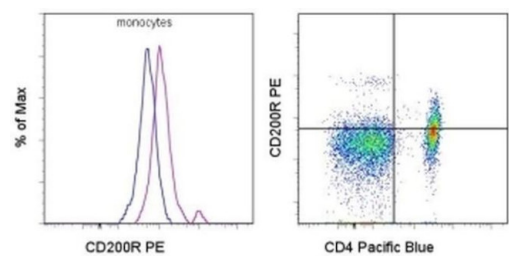
Applications Reported: This OX108 antibody has been reported for use in flow cytometric analysis.

Applications Tested: This OX108 antibody has been pre-titrated and tested by flow cytometric analysis of normal human peripheral blood cells. This can be used at 5 µL (0.25 µg) per test. A test is defined as the amount (µg) of antibody that will stain a cell sample in a final volume of 100 µL. Cell number should be determined empirically but can range from 10⁵ to 10⁸ cells/test.

Excitation: 488-561 nm; Emission: 578 nm; Laser: Blue Laser, Green Laser, Yellow-Green Laser.

Filtration: 0.2 µm post-manufacturing filtered.

Product Images For CD200 Receptor Monoclonal Antibody (OX108), PE, eBioscience™



CD200 Receptor Antibody (12-9201-42) in Flow
Staining of normal human peripheral blood cells with Anti-Human CD4 eFluor® 450 (Product # 48-0048-42) and Mouse IgG1 K Isotype Control PE (Product # 12-4714-81) (blue histogram) or Anti-Human CD200 Receptor PE (purple histogram). Cells in the monocyte (left) or lymphocyte (right) gates were used for analysis.

6 References

Flow Cytometry (6)

<p>PloS one</p> <p>Identification of a novel conserved signaling motif in CD200 receptor required for its inhibitory function.</p> <p>"12-9201-42 was used in Flow Cytometry to investigate whether additional motifs specify the inhibitory function of CD200R."</p> <p>Authors: Timmerman LM,de Graaf JF,Satravelas N,Kesmir Ç,Meyaard L,van der Vlist M</p>	<p>Year 2021</p> <p>Species Human</p>
<p>Frontiers in immunology</p> <p>TLR10 Senses HIV-1 Proteins and Significantly Enhances HIV-1 Infection.</p> <p>"12-9201 was used in Flow cytometry/Cell sorting to evaluate the expression of toll-like receptor 10 (TLR10) in breast milk and its role in HIV-1 infection."</p> <p>Authors: Henrick BM,Yao XD,Zahoor MA,Abimiku A,Osawe S,Rosenthal KL</p>	<p>Year 2020</p> <p>Species Human</p>

[View more Flow references on thermofisher.com](#)

More applications with references on thermofisher.com

For Research Use Only. Not for use in diagnostic procedures. Not for resale without express authorization. Products are warranted to operate or perform substantially in conformance with published Product specifications in effect at the time of sale, as set forth in the Production documentation, specifications and/or accompanying package inserts ("Documentation"). No claim of suitability for use in applications regulated by FDA is made. The warranty provided herein is valid only when used by properly trained individuals. Unless otherwise stated in the Documentation, this warranty is limited to one year from date of shipment when the Product is subjected to normal, proper and intended usage. This warranty does not extend to anyone other than the Buyer. Any model or sample furnished to Buyer is merely illustrative of the general type and quality of goods and does not represent that any Product will conform to such model or sample. NO OTHER WARRANTIES, EXPRESS OR IMPLIED, ARE GRANTED INCLUDING WITHOUT LIMITATION, IMPLIED WARRANTIES OF MERCHANTABILITY, FITNESS FOR ANY PARTICULAR PURPOSE, OR NON INFRINGEMENT. BUYER'S EXCLUSIVE REMEDY FOR NON-CONFORMING PRODUCTS DURING THE WARRANTY PERIOD IS LIMITED TO REPAIR, REPLACEMENT OF OR REFUND FOR THE NON-CONFORMING PRODUCT(S) AT SELLER'S SOLE OPTION. THERE IS NO OBLIGATION TO REPAIR, REPLACE OR REFUND FOR PRODUCTS AS THE RESULT OF (I) ACCIDENT, DISASTER OR EVENT OF FORCE MAJEURE, (II) MISUSE, FAULT OR NEGLIGENCE OF OR BY BUYER, (III) USE OF THE PRODUCTS IN A MANNER FOR WHICH THEY WERE NOT DESIGNED, OR (IV) IMPROPER STORAGE AND HANDLING OF THE PRODUCTS. Unless otherwise expressly stated on the Product or in the documentation accompanying the Product, the Product is intended for research only and is not to be used for any other purpose, including without limitation, unauthorized commercial uses, in vitro diagnostic uses, ex vivo or in vivo therapeutic uses, or any type of consumption by or application to human or animals.