

CD326 (EpCAM) Monoclonal Antibody (1B7), PE, eBioscience™

Product Details	
Size	100 Tests
Species Reactivity	Human
Published Species	Hamster, Human, Mouse
Host/Isotype	Mouse / IgG1, kappa
Recommended Isotype Control	Mouse IgG1 kappa Isotype Control (P3.6.2.8.1), PE, eBioscience™
Class	Monoclonal
Type	Antibody
Clone	1B7
Conjugate	PE
Excitation/Emission Max	565/576 nm
Form	Liquid
Concentration	5 µL/Test
Purification	Affinity chromatography
Storage buffer	PBS, pH 7.2, with 0.2% BSA
Contains	0.09% sodium azide
Storage conditions	4° C, store in dark, DO NOT FREEZE!
RRID	AB_11044497

Applications	Tested Dilution	Publications
Immunohistochemistry (IHC)	-	1 Publication
Flow Cytometry (Flow)	5 µL (0.125 µg)/test	24 Publications

Product Specific Information

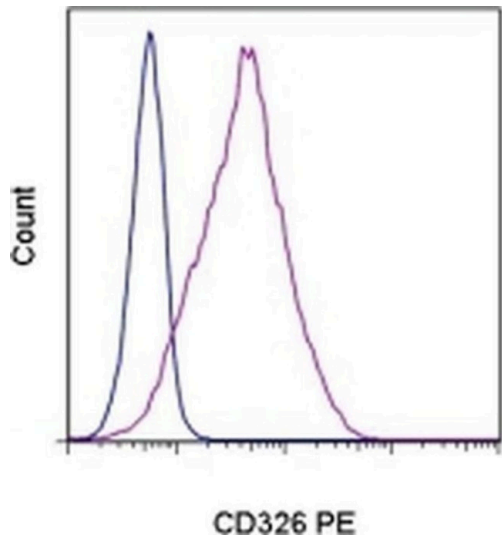
Description: EpCAM (Epithelial cell adhesion molecule, CD326, KSA, TROP1) is a 40 kD cell-surface adhesion molecule participating in homophilic, calcium-independent cell-cell interactions. EpCAM is a type-I transmembrane protein, and is expressed primarily on the basolateral surface of most epithelia. Although normal epithelia express low levels of EpCAM, increased expression has been correlated with increased proliferation and progression to a mesenchymal phenotype. EpCAM has also been used as a diagnostic marker on circulating metastatic carcinoma cells, while cancer cells of non-epithelial origin do not express EpCAM.

Applications Reported: This 1B7 antibody has been reported for use in flow cytometric analysis.

Applications Tested: This 1B7 antibody has been pre-titrated and tested by flow cytometric analysis of A549 human lung carcinoma cells. This can be used at 5 µL (0.125 µg) per test. A test is defined as the amount (µg) of antibody that will stain a cell sample in a final volume of 100 µL. Cell number should be determined empirically but can range from 10⁵ to 10⁸ cells /test.

Excitation: 488-561 nm; **Emission:** 578 nm; **Laser:** Blue Laser, Green Laser, Yellow-Green Laser.

Filtration: 0.2 µm post-manufacturing filtered.



CD326 (EpCAM) Antibody (12-9326-42) in Flow
Staining of A549 human lung carcinoma cell line with Mouse IgG1 kappa Isotype Control PE (Product # 12-4714-82) (blue histogram) or Anti-Human CD326 (EpCAM) PE (purple histogram). Total viable cells were used for analysis.

[View more figures on thermofisher.com](https://thermofisher.com)

Immunohistochemistry (1)

<p>BMC cancer</p> <p>A cell transportation solution that preserves live circulating tumor cells in patient blood samples.</p> <p>"12-9326 was used in Immunohistochemistry to examine the long term viability of human cancer cell lines in a novel sugar-based cell transportation solution."</p> <p>Authors: Stefansson S,Adams DL,Ershler WB,Le H,Ho DH</p>	<p>Year 2016</p> <p>Species Human Hamster</p>
--	---

Flow Cytometry (24)

<p>International journal of cancer</p> <p>Dynamics of CXCR4 positive circulating tumor cells in prostate cancer patients during radiotherapy.</p> <p>"Published figure using CD326 (EpCAM) monoclonal antibody (Product # 12-9326-42) in Flow Cytometry"</p> <p>Authors: Klusa D,Lohaus F,Franken A,Baumbach M,Cojoc M,Dowling P,Linge A,Offermann A,Löck S,Huřman D, Rivandi M,Polzer B,Freytag V,Lange T,Neubauer H,Kücken M,Perner S,Hölscher T,Dubrovskaa A,Krause M,Kurth I, Baumann M,Peitzsch C</p>	<p>Year 2023</p>
--	-----------------------------

<p>Frontiers in immunology</p> <p>Dendritic cell phenotype and function in a 3D co-culture model of patient-derived metastatic colorectal cancer organoids.</p> <p>"12-9326-42 was used in Flow cytometry/Cell sorting to examine expression of activation markers in both mature and immature DCs and their ability to activate T cells were impacted by co-culture with tumor organoids using a 3D modelling."</p> <p>Authors: Subtil B,Iyer KK,Poel D,Bakkerus L,Gorris MAJ,Escalona JC,van den Dries K,Cambi A,Verheul HMW,de Vries IJM,Tauriello DVF</p>	<p>Year 2023</p> <p>Species Human</p> <p>Dilution 1:30</p>
---	---

View more Flow references on thermofisher.com

More applications with references on thermofisher.com

For Research Use Only. Not for use in diagnostic procedures. Not for resale without express authorization. Products are warranted to operate or perform substantially in conformance with published Product specifications in effect at the time of sale, as set forth in the Production documentation, specifications and/or accompanying package inserts ("Documentation"). No claim of suitability for use in applications regulated by FDA is made. The warranty provided herein is valid only when used by properly trained individuals. Unless otherwise stated in the Documentation, this warranty is limited to one year from date of shipment when the Product is subjected to normal, proper and intended usage. This warranty does not extend to anyone other than the Buyer. Any model or sample furnished to Buyer is merely illustrative of the general type and quality of goods and does not represent that any Product will conform to such model or sample. NO OTHER WARRANTIES, EXPRESS OR IMPLIED, ARE GRANTED INCLUDING WITHOUT LIMITATION, IMPLIED WARRANTIES OF MERCHANTABILITY, FITNESS FOR ANY PARTICULAR PURPOSE, OR NON INFRINGEMENT. BUYER'S EXCLUSIVE REMEDY FOR NON-CONFORMING PRODUCTS DURING THE WARRANTY PERIOD IS LIMITED TO REPAIR, REPLACEMENT OF OR REFUND FOR THE NON-CONFORMING PRODUCT(S) AT SELLER'S SOLE OPTION. THERE IS NO OBLIGATION TO REPAIR, REPLACE OR REFUND FOR PRODUCTS AS THE RESULT OF (I) ACCIDENT, DISASTER OR EVENT OF FORCE MAJEURE, (II) MISUSE, FAULT OR NEGLIGENCE OF OR BY BUYER, (III) USE OF THE PRODUCTS IN A MANNER FOR WHICH THEY WERE NOT DESIGNED, OR (IV) IMPROPER STORAGE AND HANDLING OF THE PRODUCTS. Unless otherwise expressly stated on the Product or in the documentation accompanying the Product, the Product is intended for research only and is not to be used for any other purpose, including without limitation, unauthorized commercial uses, in vitro diagnostic uses, ex vivo or in vivo therapeutic uses, or any type of consumption by or application to human or animals.