

# HLA-E Monoclonal Antibody (3D12HLA-E), PE, eBioscience™

Product Details	
Size	100 Tests
Species Reactivity	Human
Published Species	Rat, Human
Host/Isotype	Mouse / IgG1, kappa
Recommended Isotype Control	Mouse IgG1 kappa Isotype Control (P3.6.2.8.1), PE, eBioscience™
Class	Monoclonal
Type	Antibody
Clone	3D12HLA-E
Conjugate	PE
Excitation/Emission Max	565/576 nm
Form	Liquid
Concentration	5 µL/Test
Purification	Affinity chromatography
Storage buffer	PBS, pH 7.2, with 0.2% BSA
Contains	0.09% sodium azide
Storage conditions	4° C, store in dark, DO NOT FREEZE!
RRID	AB_1834461

Applications	Tested Dilution	Publications
Flow Cytometry (Flow)	5 µL (0.5 µg)/test	14 Publications

## Product Specific Information

**Description:** The monoclonal antibody 3D12 (HLA-E) recognizes human HLA-E, a member of the Human Leukocyte Antigen family. HLA-E is a MHC Class IB member, which has a specialized role in NK cell recognition. Binding of a restricted set of peptides derived from other Class I leader sequences to the HLA-E and B2M (beta2 microglobulin) complex leads to interaction with NKG2A on NK cells. This binding protects the HLA-G-expressing cell from NK cell killing. HLA-E expression is ubiquitous.

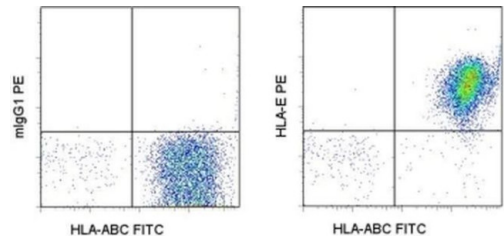
**Applications Reported:** This 3D12 (HLA-E) antibody has been reported for use in flow cytometric analysis.

**Applications Tested:** This 3D12HLA-E antibody has been pre-titrated and tested by flow cytometric analysis of normal human peripheral blood cells. This can be used at 5 µL (0.5 µg) per test. A test is defined as the amount (µg) of antibody that will stain a cell sample in a final volume of 100 µL. Cell number should be determined empirically but can range from 10<sup>5</sup> to 10<sup>8</sup> cells /test.

**Excitation:** 488-561 nm; **Emission:** 578 nm; **Laser:** Blue Laser, Green Laser, Yellow-Green Laser.

**Filtration:** 0.2 µm post-manufacturing filtered.

Product Images For HLA-E Monoclonal Antibody (3D12HLA-E), PE, eBioscience™



**HLA-E Antibody (12-9953-42) in Flow**  
Staining of normal human peripheral blood cells with Anti-Human HLA-ABC FITC (Product # 11-9983-42) and Mouse IgG1 kappa Isotype Control PE (Product # 12-4714-81) (left) or Anti-Human HLA-E PE (right). Cells in the lymphocyte gate were used for analysis.

14 References

Flow Cytometry (14)

<p>Frontiers in immunology</p> <p><b>V9V2 T Cells Activation Through Phosphoantigens Can Be Impaired by a RHOB Rerouting in Lung Cancer.</b></p> <p>"12-9953-42 was used in Flow Cytometry to study T cell activation in lung cancer."</p> <p>Authors: Laplagne C,Meddour S,Figarol S,Michelas M,Calvayrac O,Favre G,Laurent C,Fournié JJ,Cabantous S,Poupot M</p>	<p>Year 2021</p> <p>Species Human</p>
<p>Oncology reports</p> <p><b>Selection of tumorresistant variants following sustained natural killer cellmediated immune stress.</b></p> <p>"12-9953 was used in Flow cytometry/Cell sorting to study the role of NK cells which may span far beyond the mere killing of malignant cells, and NK cells may be important effectors during cancer immunoediting."</p> <p>Authors: Carré T,Thiery J,Janji B,Terry S,Gros G,Meurice G,Kieda C,Olive D,Chouaib S</p>	<p>Year 2021</p> <p>Species Human</p>

View more Flow references on thermofisher.com

More applications with references on thermofisher.com

For Research Use Only. Not for use in diagnostic procedures. Not for resale without express authorization. Products are warranted to operate or perform substantially in conformance with published Product specifications in effect at the time of sale, as set forth in the Production documentation, specifications and/or accompanying package inserts ("Documentation"). No claim of suitability for use in applications regulated by FDA is made. The warranty provided herein is valid only when used by properly trained individuals. Unless otherwise stated in the Documentation, this warranty is limited to one year from date of shipment when the Product is subjected to normal, proper and intended usage. This warranty does not extend to anyone other than the Buyer. Any model or sample furnished to Buyer is merely illustrative of the general type and quality of goods and does not represent that any Product will conform to such model or sample. NO OTHER WARRANTIES, EXPRESS OR IMPLIED, ARE GRANTED INCLUDING WITHOUT LIMITATION, IMPLIED WARRANTIES OF MERCHANTABILITY, FITNESS FOR ANY PARTICULAR PURPOSE, OR NON INFRINGEMENT. BUYER'S EXCLUSIVE REMEDY FOR NON-CONFORMING PRODUCTS DURING THE WARRANTY PERIOD IS LIMITED TO REPAIR, REPLACEMENT OF OR REFUND FOR THE NON-CONFORMING PRODUCT(S) AT SELLER'S SOLE OPTION. THERE IS NO OBLIGATION TO REPAIR, REPLACE OR REFUND FOR PRODUCTS AS THE RESULT OF (i) ACCIDENT, DISASTER OR EVENT OF FORCE MAJEURE, (ii) MISUSE, FAULT OR NEGLIGENCE OF OR BY BUYER, (iii) USE OF THE PRODUCTS IN A MANNER FOR WHICH THEY WERE NOT DESIGNED, OR (iv) IMPROPER STORAGE AND HANDLING OF THE PRODUCTS. Unless otherwise expressly stated on the Product or in the documentation accompanying the Product, the Product is intended for research only and is not to be used for any other purpose, including without limitation, unauthorized commercial uses, in vitro diagnostic uses, ex vivo or in vivo therapeutic uses, or any type of consumption by or application to human or animals.