

CD273 (B7-DC) Monoclonal Antibody (122), PE, eBioscience™

Product Details

Size	50 µg
Species Reactivity	Mouse
Published Species	Mouse
Host/Isotype	Rat / IgG2a, kappa
Recommended Isotype Control	Rat IgG2a kappa Isotype Control (eBR2a), PE, eBioscience™
Class	Monoclonal
Type	Antibody
Clone	122
Conjugate	PE
Form	Liquid
Concentration	0.2 mg/mL
Storage conditions	4° C, store in dark, DO NOT FREEZE!
RRID	AB_466284

Applications

Tested Dilution

Publications

Flow Cytometry (Flow)

0.125 µg/test

5 Publications

Product Specific Information

Description: The 122 monoclonal antibody reacts with mouse B7-DC, also known as PD-L2. B7-DC, a recently identified member of the B7 family, has a predicted molecular weight of approximately 25 kDa and belongs to the Ig superfamily. The mouse B7-DC has a short cytoplasmic tail (4aa). B7-DC is primarily expressed by subpopulations of dendritic cells and monocytes/macrophages in the mouse. Although B7-DC has structural and sequence similarities to the B7 family, it does not bind CD28/CTLA-4, rather it is a ligand for PD-1. The interactions between PD-1 and B7-DC/PD-L2 have been reported to be involved in costimulation or suppression of T cell proliferation depending on state of cellular activation. 122 has been demonstrated to block binding of TY25 (Cat. No.14-5986), another mAb specific for mouse B7-DC.

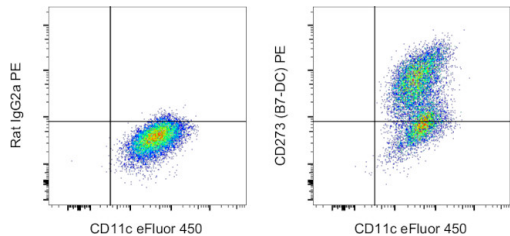
Applications Reported: 122 has been reported for use in flow cytometric analysis.

Applications Tested: The 122 antibody has been tested by flow cytometric analysis of mouse dendritic cells or mouse B7-DC transfected cells. This can be used at less than or equal to 0.125 µg per test. A test is defined as the amount (µg) of antibody that will stain a cell sample in a final volume of 100 µL. Cell number should be determined empirically but can range from 10⁵ to 10⁸ cells/test. It is recommended that the antibody be carefully titrated for optimal performance in the assay of interest.

Excitation: 488-561 nm; **Emission:** 578 nm; **Laser:** Blue Laser, Green Laser, Yellow-Green Laser.

Filtration: 0.2 µm post-manufacturing filtered.

Product Images For CD273 (B7-DC) Monoclonal Antibody (122), PE, eBioscience™



CD273 (B7-DC) Antibody (12-9972-81) in Flow
C57BL/6 bone marrow derived dendritic cells were stained with CD11c Monoclonal Antibody, eFluor 450 (Product # 48-0114-82) and 0.06 µg of Rat IgG2a kappa Isotype Control, PE (Product # 12-4321-83) (left) or 0.06 µg of CD273 (B7-DC) Monoclonal Antibody, PE (right). Total viable cells were used for analysis, as determined by Fixable Viability Dye eFluor 780 (Product # 65-0865-18).

5 References

Flow Cytometry (5)

<p>Oncoimmunology</p> <p>Impact of myeloid-derived suppressor cell on Kupffer cells from mouse livers with hepatocellular carcinoma.</p> <p>"12-9972 was used in Flow cytometry/Cell sorting to investigate the function of the myeloid-derived suppressor cell subsets, and their impact on Kupffer cell phenotype and function."</p> <p>Authors: Lacotte S,Slits F,Orci LA,Meyer J,Oldani G,Delaune V,Gonelle-Gispert C,Morel P,Toso C</p>	<p>Year 2021</p> <p>Species Mouse</p>
<p>The Journal of experimental medicine</p> <p>ILC2s regulate adaptive Th2 cell functions via PD-L1 checkpoint control.</p> <p>"12-9972 was used in Flow cytometry/Cell sorting to study how group 2 innate lymphoid cells regulate adaptive Th2 cell functions."</p> <p>Authors: Schwartz C,Khan AR,Floudas A,Saunders SP,Hams E,Rodewald HR,McKenzie ANJ,Fallon PG</p>	<p>Year 2017</p> <p>Species Mouse</p>

[View more Flow references on thermofisher.com](#)

More applications with references on thermofisher.com

For Research Use Only. Not for use in diagnostic procedures. Not for resale without express authorization. Products are warranted to operate or perform substantially in conformance with published Product specifications in effect at the time of sale, as set forth in the Production documentation, specifications and/or accompanying package inserts ("Documentation"). No claim of suitability for use in applications regulated by FDA is made. The warranty provided herein is valid only when used by properly trained individuals. Unless otherwise stated in the Documentation, this warranty is limited to one year from date of shipment when the Product is subjected to normal, proper and intended usage. This warranty does not extend to anyone other than the Buyer. Any model or sample furnished to Buyer is merely illustrative of the general type and quality of goods and does not represent that any Product will conform to such model or sample. NO OTHER WARRANTIES, EXPRESS OR IMPLIED, ARE GRANTED INCLUDING WITHOUT LIMITATION, IMPLIED WARRANTIES OF MERCHANTABILITY, FITNESS FOR ANY PARTICULAR PURPOSE, OR NON-INFRINGEMENT. BUYER'S EXCLUSIVE REMEDY FOR NON-CONFORMING PRODUCTS DURING THE WARRANTY PERIOD IS LIMITED TO REPAIR, REPLACEMENT OF OR REFUND FOR THE NON-CONFORMING PRODUCT(S) AT SELLER'S SOLE OPTION. THERE IS NO OBLIGATION TO REPAIR, REPLACE OR REFUND FOR PRODUCTS AS THE RESULT OF (I) ACCIDENT, DISASTER OR EVENT OF FORCE MAJEURE, (II) MISUSE, FAULT OR NEGLIGENCE OF OR BY BUYER, (III) USE OF THE PRODUCTS IN A MANNER FOR WHICH THEY WERE NOT DESIGNED, OR (IV) IMPROPER STORAGE AND HANDLING OF THE PRODUCTS. Unless otherwise expressly stated on the Product or in the documentation accompanying the Product, the Product is intended for research only and is not to be used for any other purpose, including without limitation, unauthorized commercial uses, in vitro diagnostic uses, ex vivo or in vivo therapeutic uses, or any type of consumption by or application to human or animals.