

# CD2 Monoclonal Antibody (RPA-2.10), Biotin, eBioscience™

Product Details	
Size	100 µg
Species Reactivity	Baboon, Chimpanzee, Cynomolgus monkey, Human, Non-human primate, Pig, Rhesus monkey
Published Species	Mouse, Human
Host/Isotype	Mouse / IgG1, kappa
Recommended Isotype Control	Mouse IgG1 kappa Isotype Control (P3.6.2.8.1), Biotin, eBioscience™
Class	Monoclonal
Type	Antibody
Clone	RPA-2.10
Conjugate	Biotin
Form	Liquid
Concentration	0.5 mg/mL
Purification	Affinity chromatography
Storage buffer	PBS, pH 7.2
Contains	0.09% sodium azide
Storage conditions	4° C, store in dark, DO NOT FREEZE!
RRID	AB_466314

Applications	Tested Dilution	Publications
Immunohistochemistry (IHC)	-	2 Publications
Immunohistochemistry (Frozen) (IHC (F))	-	1 Publication
Flow Cytometry (Flow)	1 µg/test	2 Publications
Functional Assay (FN)	-	1 Publication

## Product Specific Information

Description: The RPA-2.10 monoclonal antibody reacts with human CD2, a 50 kDa cell surface receptor expressed by a majority of thymocytes, all mature T cells and subset of NK cells. CD2 is a ligand for CD58 in the human and is involved in adhesion and activation of T cells. RPA-2.10 blocks mixed lymphocyte reaction.

RPA-2.10 crossreacts to non-human primates and pigs.

Applications Reported: The RPA-2.10 antibody has been reported for use in flow cytometric analysis.

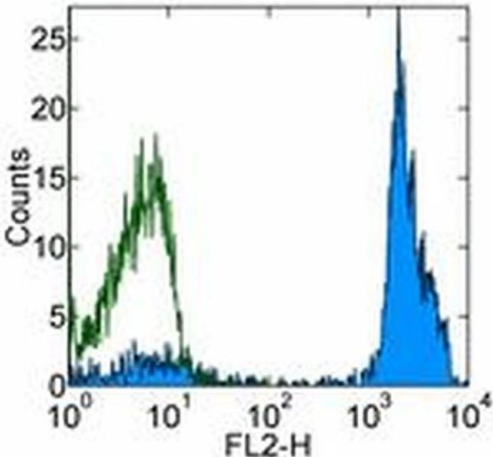
Applications Tested: The RPA-2.10 antibody has been tested by flow cytometric analysis of normal human peripheral blood cells. This can be used at less than or equal to 1 µg per test. A test is defined as the amount (µg) of antibody that will stain a cell sample in a final volume of 100 µL. Cell number should be determined empirically but can range from 10<sup>5</sup> to 10<sup>8</sup> cells/test. It is recommended that the antibody be carefully titrated for optimal performance in the assay of interest.

Filtration: 0.2 µm post-manufacturing filtered.

Product Images For CD2 Monoclonal Antibody (RPA-2.10), Biotin, eBioscience™

**CD2 Antibody (13-0029-82) in Flow**

Staining of normal human peripheral blood cells with 0.125 µg of Mouse IgG1 kappa Isotype Control Biotin (Product # 13-4714-85) (open histogram) or 0.125 µg of Anti-Human CD2 Biotin (filled histogram) followed by Streptavidin PE (Product # 12-4317-87). Cells in the lymphocyte gate were used for analysis.



## 6 References

### Immunohistochemistry (2)

Nature immunology

#### Divergent expression patterns of IL-4 and IL-13 define unique functions in allergic immunity.

"13-0029 was used in Immunohistochemistry to assess the temporal and spatial production of IL-4 and IL-13 in vivo."

Authors: Liang HE,Reinhardt RL,Bando JK,Sullivan BM,Ho IC,Locksley RM

**Species**  
Mouse

**Dilution**  
Not Cited

**Year**  
2011

Nature immunology

#### Cytokine-secreting follicular T cells shape the antibody repertoire.

"13-0029 was used in Immunohistochemistry to study how B cells compete for cytokines produced by follicular helper T cells that shape the affinity and isotype of the antibody response."

Authors: Reinhardt RL,Liang HE,Locksley RM

**Species**  
Mouse

**Dilution**  
Not Cited

**Year**  
2009

### Immunohistochemistry (Frozen) (1)

The journal of histochemistry and cytochemistry : official journal of the Histochemistry Society

#### A monoclonal antibody selection for immunohistochemical examination of lymphoid tissues from non-human primates.

Authors: Kap YS,van Meurs M,van Driel N,Koopman G,Melief MJ,Brok HP,Laman JD,'t Hart BA

**Species**  
Not Applicable

**Dilution**  
Not Cited

**Year**  
2009

### Flow Cytometry (2)

Biophysical journal

#### Constraints on GPCR Heterodimerization Revealed by the Type-4 Induced-Association BRET Assay.

"Published figure using CD2 monoclonal antibody (Product # 13-0029-82) in Flow Cytometry"

Authors: Felce JH,MacRae A,Davis SJ

**Species**  
Not Applicable

**Dilution**  
Not Cited

**Year**  
2019

### More applications with references on thermofisher.com

## FN (1)

For Research Use Only. Not for use in diagnostic procedures. Not for resale without express authorization. Products are warranted to operate or perform substantially in conformance with published Product specifications in effect at the time of sale, as set forth in the Production documentation, specifications and/or accompanying package inserts ("Documentation"). No claim of suitability for use in applications regulated by FDA is made. The warranty provided herein is valid only when used by properly trained individuals. Unless otherwise stated in the Documentation, this warranty is limited to one year from date of shipment when the Product is subjected to normal, proper and intended usage. This warranty does not extend to anyone other than the Buyer. Any model or sample furnished to Buyer is merely illustrative of the general type and quality of goods and does not represent that any Product will conform to such model or sample. NO OTHER WARRANTIES, EXPRESS OR IMPLIED, ARE GRANTED INCLUDING WITHOUT LIMITATION, IMPLIED WARRANTIES OF MERCHANTABILITY, FITNESS FOR ANY PARTICULAR PURPOSE, OR NON INFRINGEMENT. BUYER'S EXCLUSIVE REMEDY FOR NON-CONFORMING PRODUCTS DURING THE WARRANTY PERIOD IS LIMITED TO REPAIR, REPLACEMENT OF OR REFUND FOR THE NON-CONFORMING PRODUCT(S) AT SELLER'S SOLE OPTION. THERE IS NO OBLIGATION TO REPAIR, REPLACE OR REFUND FOR PRODUCTS AS THE RESULT OF (I) ACCIDENT, DISASTER OR EVENT OF FORCE MAJEURE, (II) MISUSE, FAULT OR NEGLIGENCE OF OR BY BUYER, (III) USE OF THE PRODUCTS IN A MANNER FOR WHICH THEY WERE NOT DESIGNED, OR (IV) IMPROPER STORAGE AND HANDLING OF THE PRODUCTS. Unless otherwise expressly stated on the Product or in the documentation accompanying the Product, the Product is intended for research only and is not to be used for any other purpose, including without limitation, unauthorized commercial uses, in vitro diagnostic uses, ex vivo or in vivo therapeutic uses, or any type of consumption by or application to human or animals.