

beta Amyloid Monoclonal Antibody (AMY-33)

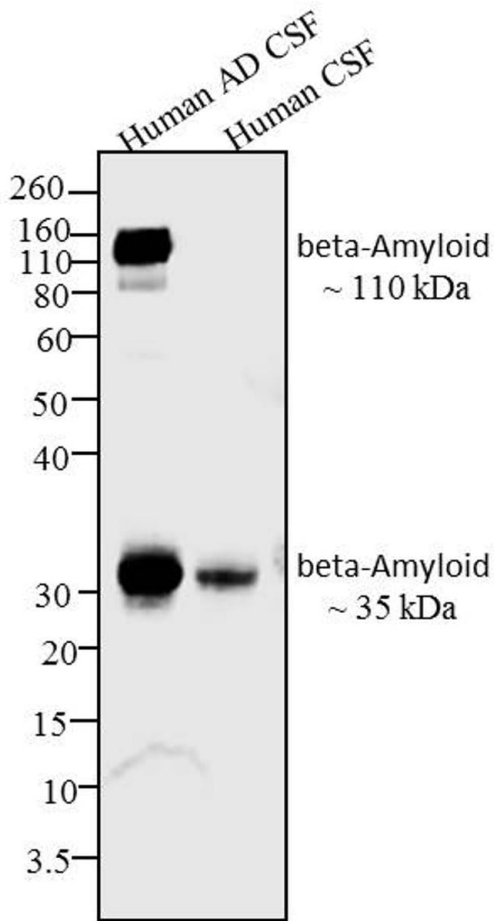
Product Details	
Size	100 µg
Species Reactivity	Human
Published Species	Mouse, Human
Host/Isotope	Mouse / IgG1, kappa
Class	Monoclonal
Type	Antibody
Clone	AMY-33
Conjugate	Unconjugated
Immunogen	A 28 amino acid synthetic peptide derived from the beta-amyloid peptide.
Form	Liquid
Concentration	0.5 mg/mL
Purification	purified
Storage buffer	PBS, pH 7.4
Contains	0.1% sodium azide
Storage Conditions	-20°C
RRID	AB_2532992

Applications	Tested	Dilution	Published
Functional Assay (FN)	-		1 Publication
ELISA (ELISA)	✓	Assay Dependent	2 Publications
Miscellaneous PubMed (MISC)	-		2 Publications
Immunohistochemistry (IHC)	✓	Assay Dependent	1 Publication
Western Blot (WB)	✓	2 µg/mL	

Advanced Verification Data

beta Amyloid Antibody (13-0100Z)

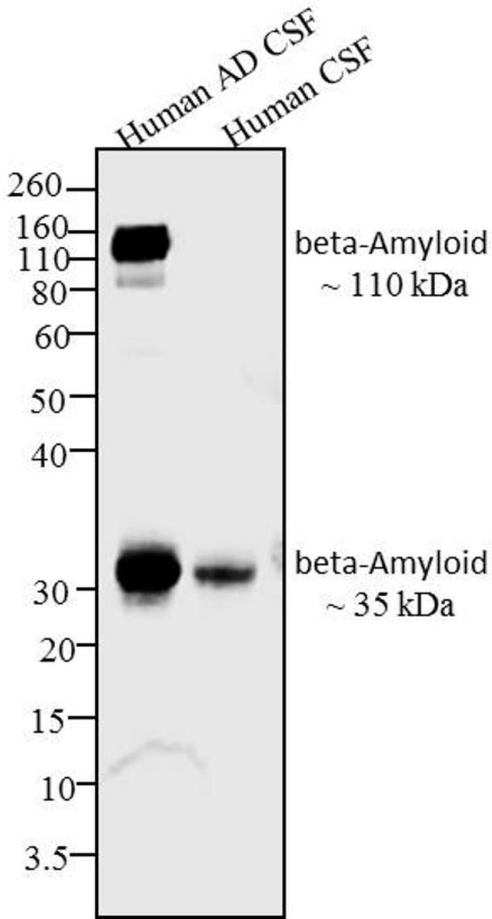
Antibody specificity was demonstrated by detection of differential expression of the target between the relevant diseased and normal natural samples. Expression of beta Amyloid was observed specifically in human AD CSF sample using beta Amyloid Mouse monoclonal Antibody (Product # 13-0100Z) in western blot. Relative expression validation info.



Product Images For beta Amyloid Monoclonal Antibody (AMY-33)

beta Amyloid Antibody (13-0100Z) in WB

Western blot analysis was performed on Human samples (30 µg) of Alzheimer's Disease patient CSF sample (Lane 1) and corresponding normal CSF sample (Lane 2). The blots were probed with Anti-beta-Amyloid Mouse Monoclonal Antibody (Product # 13-0100Z, 2 µg/mL) and detected by chemiluminescence using Goat anti-Mouse IgG (H+L) Superclonal™ Secondary Antibody, HRP conjugate (Product # A28177, 0.4 µg/mL, 1:2500 dilution). A ~ 110 kDa band corresponding to beta-Amyloid was observed in Alzheimer's Disease patient CSF sample and a 35 kDa band was observed across both human samples. Known quantity of protein samples were electrophoresed using Novex® NuPAGE® 10 % Bis-Tris gel (Product # NP0302BOX), XCell SureLock™ Electrophoresis System (Product # EI0002) and Novex® Sharp Pre-Stained Protein Standard (Product # LC5800). Resolved proteins were then transferred onto a nitrocellulose membrane with Pierce™ Power Blotter System (22834). The membrane was probed with the relevant primary and secondary Antibody using iBind™ Flex Western Starter Kit (Product # SLF2000S). Chemiluminescent detection was performed using Pierce™ ECL Western Blotting Substrate (Product # 32106).



6 References

Functional Assay (1)

Molecular and cellular proteomics : MCP

Novel Molecular Insights into Classical and Alternative Activation States of Microglia as Revealed by Stable Isotope Labeling by Amino Acids in Cell Culture (SILAC)-based Proteomics.

Authors: Bell-Temin H,Culver-Cochran AE,Chaput D,Carlson CM,Kuehl M,Burkhardt BR,Bickford PC,Liu B,Stevens SM

Species
Mouse

Dilution
Not Cited

Year
2015

ELISA (2)

Bioorganic and medicinal chemistry letters

Inhibiting protein-amyloid interactions with small molecules: a surface chemistry approach.

Authors: Inbar P,Yang J

Species
Human

Dilution
Not Cited

Year
2006

Expert review of vaccines

Intracerebroventricular passive immunization in transgenic mouse models of Alzheimer's disease.

"13-0100Z was used in ELISA to use intracerebroventricular injection of anti-Abeta antibody to treat murine models of Alzheimer's disease"

Authors: Chauhan NB,Siegel GJ

Species
Not Applicable

Dilution
Not Cited

Year
2004

Miscellaneous PubMed (2)

Bioorganic and medicinal chemistry letters

Inhibiting protein-amyloid interactions with small molecules: a surface chemistry approach.

Authors: Inbar P,Yang J

Species
Human

Dilution
Not Cited

Year
2006

More applications with references on thermofisher.com

IHC (1)

For Research Use Only. Not for use in diagnostic procedures. Not for resale without express authorization. Products are warranted to operate or perform substantially in conformance with published Product specifications in effect at the time of sale, as set forth in the Production documentation, specifications and/or accompanying package inserts ("Documentation"). No claim of suitability for use in applications regulated by FDA is made. The warranty provided herein is valid only when used by properly trained individuals. Unless otherwise stated in the Documentation, this warranty is limited to one year from date of shipment when the Product is subjected to normal, proper and intended usage. This warranty does not extend to anyone other than the Buyer. Any model or sample furnished to Buyer is merely illustrative of the general type and quality of goods and does not represent that any Product will conform to such model or sample. NO OTHER WARRANTIES, EXPRESS OR IMPLIED, ARE GRANTED INCLUDING WITHOUT LIMITATION, IMPLIED WARRANTIES OF MERCHANTABILITY, FITNESS FOR ANY PARTICULAR PURPOSE, OR NON-INFRINGEMENT. BUYER'S EXCLUSIVE REMEDY FOR NON-CONFORMING PRODUCTS DURING THE WARRANTY PERIOD IS LIMITED TO REPAIR, REPLACEMENT OF OR REFUND FOR THE NON-CONFORMING PRODUCT(S) AT SELLER'S SOLE OPTION. THERE IS NO OBLIGATION TO REPAIR, REPLACE OR REFUND FOR PRODUCTS AS THE RESULT OF (I) ACCIDENT, DISASTER OR EVENT OF FORCE MAJEURE, (II) MISUSE, FAULT OR NEGLIGENCE OF OR BY BUYER, (III) USE OF THE PRODUCTS IN A MANNER FOR WHICH THEY WERE NOT DESIGNED, OR (IV) IMPROPER STORAGE AND HANDLING OF THE PRODUCTS. Unless otherwise expressly stated on the Product or in the documentation accompanying the Product, the Product is intended for research only and is not to be used for any other purpose, including without limitation, unauthorized commercial uses, in vitro diagnostic uses, ex vivo or in vivo therapeutic uses, or any type of consumption by or application to human or animals.