

NEFL Monoclonal Antibody (DA2)

Product Details	
Size	200 µg
Species Reactivity	Human, Mouse, Rat
Published Species	Rat, Mouse, Human
Host/Isotype	Mouse / IgG1, kappa
Class	Monoclonal
Type	Antibody
Clone	DA2
Conjugate	Unconjugated
Immunogen	Specifically recognizes a phosphate-independent epitope on NF-L.
Form	Liquid
Purification	purified
Storage buffer	PBS
Contains	0.1% sodium azide
Storage Conditions	-20°C
RRID	AB_2532995

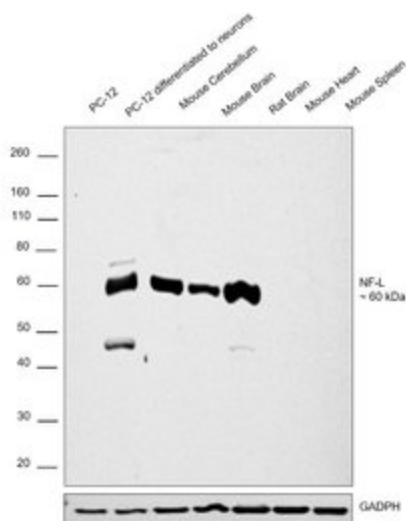
Applications	Tested Dilution	Publications
ELISA (ELISA)	0.1-0.5 µg/mL	-
Immunocytochemistry (ICC)	1:20	1 Publication
Immunofluorescence (IF)	1:20	2 Publications
Immunohistochemistry (IHC)	1:20 - 1:100	3 Publications
Immunohistochemistry (Paraffin) (IHC (P))	1:20	-
Immunoprecipitation (IP)	2-5 µg	-
Western Blot (WB)	0.5-2 µg/mL	7 Publications
Immunohistochemistry (Frozen) (IHC (F))	-	1 Publication
Miscellaneous PubMed (Misc)	-	3 Publications

Product Specific Information

13-0400 detects the neurofilament, light chain in human, rat, and mouse samples.

NEFL Antibody (13-0400)

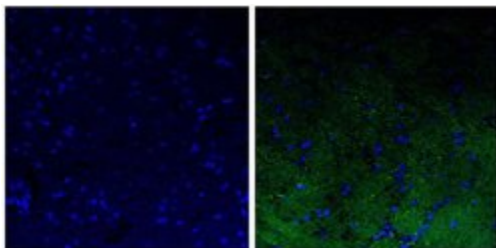
Antibody specificity was demonstrated by detection of differential basal expression of the target across tissue tested owing to their inherent genetic constitution. Relative expression of NEFL was observed in PC-12 differentiated to neurons in comparison to PC-12 undifferentiated cells. Relative expression was also observed in Mouse Cerebellum, Mouse Brain, Rat Brain in comparison to Mouse Heart and Mouse Spleen using Anti-NEFL Monoclonal Antibody (DA2) (Product # 13-0400) in Western Blot. Relative expression validation info.



Product Images For NEFL Monoclonal Antibody (DA2)

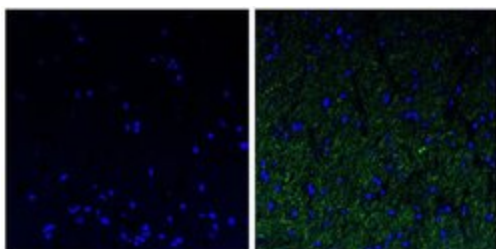
NEFL Antibody (13-0400) in IHC (P)

Immunofluorescent analysis of the neurofilament light chain in paraffin-embedded mouse brain tissue (right) compared to a negative control without primary antibody (left). Tissue sections were deparaffinized with xylene, and rehydrated with ethanol. To expose target proteins, antigen retrieval was performed using 10mM sodium citrate (pH 6.0) and microwaved for 8-15 min. Following antigen retrieval, tissues were washed with water and PBS, and then blocked in 0.3% BSA for 30 min at room temperature. Tissues were then probed with a neurofilament light chain monoclonal antibody (Product # 13-0400) in 0.3% BSA at a dilution of 1:20 for 1 hour at 37°C. Tissues were then incubated with a Goat anti-Mouse IgG (H+L) Secondary Antibody, DyLight 488 conjugate for 1 hour at 37°C (green). Nuclei (blue) were stained with DAPI. Images were taken at 40X magnification.



NEFL Antibody (13-0400) in IHC (P)

Immunofluorescent analysis of the neurofilament light chain in paraffin-embedded human brain tissue (right) compared to a negative control without primary antibody (left). Tissue sections were deparaffinized with xylene, and rehydrated with ethanol. To expose target proteins, antigen retrieval was performed using 10mM sodium citrate (pH 6.0) and microwaved for 8-15 min. Following antigen retrieval, tissues were washed with water and PBS, and then blocked in 0.3% BSA for 30 min at room temperature. Tissues were then probed with a neurofilament light chain monoclonal antibody (Product # 13-0400) in 0.3% BSA at a dilution of 1:20 for 1 hour at 37°C. Tissues were then incubated with a Goat anti-Mouse IgG (H+L) Secondary Antibody, DyLight 488 conjugate for 1 hour at 37°C (green). Nuclei (blue) were stained with DAPI. Images were taken at 40X magnification.



View more figures on thermofisher.com

Western Blot (7)

Behavioural brain research

Beneficial effects of benzodiazepine diazepam on chronic stress-induced impairment of hippocampal structural plasticity and depression-like behavior in mice.

"13-0400 was used in western blot to report the results from four preclinical experiments to determine the effects of benzodiazepines using a chronic unpredictable stress model."

Authors: Zhao Y,Wang Z,Dai J,Chen L,Huang Y,Zhan Z

Species
Mouse

Dilution
1:500

Year
2012

The Journal of neuroscience : the official journal of the Society for Neuroscience

Unbiased Proteomics of Early Lewy Body Formation Model Implicates Active Microtubule Affinity-Regulating Kinases (MARKs) in Synucleinopathies.

"13-0400 was used in Western Blotting to support a role for autophagy as a survival mechanism in response to stress due to ribosomal P proteins protein deficiency."

Authors: Henderson MX,Chung CH,Riddle DM,Zhang B,Gathagan RJ,Seeholzer SH,Trojanowski JQ,Lee VMY

Species
Mouse

Dilution
1:500

Year
2017

[View more WB references on thermofisher.com](#)

Immunohistochemistry (3)

Nature cell biology

A NUDEL-dependent mechanism of neurofilament assembly regulates the integrity of CNS neurons.

Authors: Nguyen MD,Shu T,Sanada K,Larivière RC,Tseng HC,Park SK,Julien JP,Tsai LH

Species
Human
Mouse

Dilution
Not Cited
Not Cited

Year
2004

Proceedings. Biological sciences

Substituting mouse transcription factor Pou4f2 with a sea urchin orthologue restores retinal ganglion cell development.

"13-0400 was used in immunohistochemistry to characterize restoration of retinal ganglion cell development by substitution of mouse transcription factor Pou4f2 with a sea urchin orthologue"

Authors: Mao CA,Agca C,Mocko-Strand JA,Wang J,Ullrich-Lüter E,Pan P,Wang SW,Arnone MI,Frishman LJ,Klein WH

Species
Not Applicable

Dilution
1:1000

Year
2016

[View more IHC references on thermofisher.com](#)

More applications with references on thermofisher.com

IHC (F) (1) ICC (1) IF (2) Misc (3)

For Research Use Only. Not for use in diagnostic procedures. Not for resale without express authorization. Products are warranted to operate or perform substantially in conformance with published Product specifications in effect at the time of sale, as set forth in the Production documentation, specifications and/or accompanying package inserts ("Documentation"). No claim of suitability for use in applications regulated by FDA is made. The warranty provided herein is valid only when used by properly trained individuals. Unless otherwise stated in the Documentation, this warranty is limited to one year from date of shipment when the Product is subjected to normal, proper and intended usage. This warranty does not extend to anyone other than the Buyer. Any model or sample furnished to Buyer is merely illustrative of the general type and quality of goods and does not represent that any Product will conform to such model or sample. NO OTHER WARRANTIES, EXPRESS OR IMPLIED, ARE GRANTED INCLUDING WITHOUT LIMITATION, IMPLIED WARRANTIES OF MERCHANTABILITY, FITNESS FOR ANY PARTICULAR PURPOSE, OR NON INFRINGEMENT. BUYER'S EXCLUSIVE REMEDY FOR NON-CONFORMING PRODUCTS DURING THE WARRANTY PERIOD IS LIMITED TO REPAIR, REPLACEMENT OF OR REFUND FOR THE NON-CONFORMING PRODUCT(S) AT SELLER'S SOLE OPTION. THERE IS NO OBLIGATION TO REPAIR, REPLACE OR REFUND FOR PRODUCTS AS THE RESULT OF (I) ACCIDENT, DISASTER OR EVENT OF FORCE MAJEURE, (II) MISUSE, FAULT OR NEGLIGENCE OF OR BY BUYER, (III) USE OF THE PRODUCTS IN A MANNER FOR WHICH THEY WERE NOT DESIGNED, OR (IV) IMPROPER STORAGE AND HANDLING OF THE PRODUCTS. Unless otherwise expressly stated on the Product or in the documentation accompanying the Product, the Product is intended for research only and is not to be used for any other purpose, including without limitation, unauthorized commercial uses, in vitro diagnostic uses, ex vivo or in vivo therapeutic uses, or any type of consumption by or application to human or animals.