

CD152 (CTLA-4) Monoclonal Antibody (14D3), Biotin, eBioscience™

Product Details	
Size	100 µg
Species Reactivity	Human, Rhesus monkey
Published Species	Artificial Control, Human
Host/Isotype	Mouse / IgG2a, kappa
Recommended Isotype Control	Mouse IgG2a kappa Isotype Control (eBM2a), Biotin, eBioscience™
Class	Monoclonal
Type	Antibody
Clone	14D3
Conjugate	Biotin
Form	Liquid
Concentration	0.5 mg/mL
Purification	Affinity chromatography
Storage buffer	PBS, pH 7.2, with 0.1% gelatin
Contains	0.09% sodium azide
Storage Conditions	4° C, store in dark, DO NOT FREEZE!
RRID	AB_466621

Applications	Tested Dilution	Publications
Immunohistochemistry (IHC)	-	1 Publication
Immunocytochemistry (ICC)	-	1 Publication
Flow Cytometry (Flow)	0.06 µg/test	3 Publications
Miscellaneous PubMed (Misc)	-	1 Publication

Product Specific Information

Description: The 14D3 monoclonal antibody reacts with human CD152, also known as cytotoxic T lymphocyte antigen-4 (CTLA-4). CTLA-4, a protein with structural similarities to CD28, is expressed on activated T cells (activated B cells may also express CTLA-4) and binds the B7 family members, CD80 (B7-1) and CD86 (B7-2), with higher affinity than CD28 does. CTLA-4 and CD28 appear to deliver opposing signals to T cells: while CD28 is a potent costimulator, CTLA-4 restricts the progression of T cells to an activated state by inhibiting IL-2 secretion and cellular proliferation. The cytoplasmic portion of CTLA-4 contains ER retention motifs, resulting in intracellular localization of a large proportion of newly synthesized CTLA-4 in response to TCR signaling.

The 14D3 antibody also recognizes rhesus monkey and has inhibitor activity.

Applications Reported: This 14D3 antibody has been reported for use in intracellular staining followed by flow cytometric analysis.

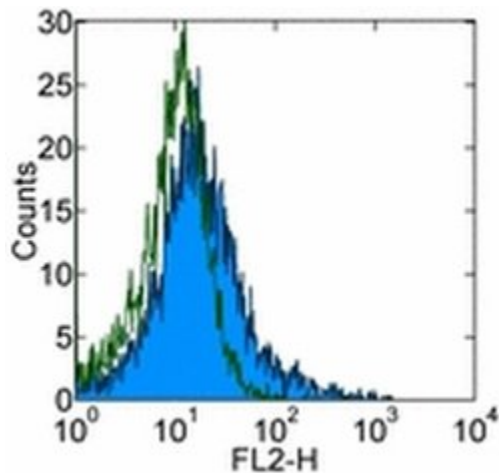
Applications Tested: This 14D3 antibody has been tested This 14D3 antibody has been pre-titrated and tested by intracellular staining and flow cytometric analysis of stimulated human peripheral blood cells using the Intracellular Fixation and Permeabilization Buffer Set (cat. 88-8824) and protocol. Please refer to Best Protocols: Protocol A: Two step protocol for

(cytoplasmic) intracellular proteins located under the Resources Tab online. This can be used at less than or equal to 0.06 µg per test. A test is defined as the amount (µg) of antibody that will stain a cell sample in a final volume of 100 µL. Cell number should be determined empirically but can range from 10⁵ to 10⁸ cells/test. It is recommended that the antibody be carefully titrated for optimal performance in the assay of interest.

Furthermore, due to the intracellular localization of a large portion of CTLA-4, for complete detection it may be necessary to assess intracellular expression, in addition to surface expression of CTLA-4.

Filtration: 0.2 µm post-manufacturing filtered.

Product Images For CD152 (CTLA-4) Monoclonal Antibody (14D3), Biotin, eBioscience™



CD152 (CTLA-4) Antibody (13-1529-82) in Flow

PHA-stimulated human peripheral blood cells were intracellularly stained with 0.03 µg of Mouse IgG2a K Isotype Control Biotin (Product # 13-4724-85) (open histogram) or 0.03 µg of Anti-Human CD152 (CTLA-4) Biotin (filled histogram) followed by Streptavidin PE (Product # 12-4317-87) using the Intracellular Fixation and Permeabilization Buffer Set (Product # 88-8824-00) and protocol. Total viable cells were used for analysis.

[View more figures on thermofisher.com](http://thermofisher.com)

6 References

Immunohistochemistry (1)

Scientific reports

Low Expression of miR-424-3p is Highly Correlated with Clinical Failure in Prostate Cancer.

"Published figure using CD152 (CTLA-4) monoclonal antibody (Product # 13-1529-82) in Immunohistochemistry"

Authors: Richardsen E, Andersen S, Al-Saad S, Rakae M, Nordby Y, Pedersen MI, Ness N, Ingebriksen LM, Fassina A, Taskén KA, Mills IG, Donnem T, Bremnes RM, Busund LT

Species
Artificial Control

Dilution
Not Cited

Year
2019

Immunocytochemistry (1)

Journal of Cancer

CD103⁺ tumor-infiltrating lymphocytes predict favorable prognosis in patients with esophageal squamous cell carcinoma.

"Published figure using CD152 (CTLA-4) monoclonal antibody (Product # 13-1529-82) in Immunocytochemistry"

Authors: Chu Y, Liao J, Li J, Wang Y, Yu X, Wang J, Xu X, Xu L, Zheng L, Xu J, Li L

Species
Not Applicable

Dilution
Not Cited

Year
2020

Flow Cytometry (3)

Oncotarget

HDAC inhibition potentiates immunotherapy in triple negative breast cancer.

"Published figure using CD152 (CTLA-4) monoclonal antibody (Product # 13-1529-82) in Flow Cytometry"

Authors: Terranova-Barberio M, Thomas S, Ali N, Pawlowska N, Park J, Krings G, Rosenblum MD, Budillon A, Munster PN

Species
Human
Not Applicable

Dilution
Not Cited
Not Cited

Year
2017

The Journal of clinical endocrinology and metabolism

Programmed death-1⁺ T cells and regulatory T cells are enriched in tumor-involved lymph nodes and associated with aggressive features in papillary thyroid cancer.

"13-1529 was used in Flow cytometry/Cell sorting to characterise the CD4(+) T cell response to metastatic PTC."

Authors: French JD, Kotnis GR, Said S, Raeburn CD, McIntyre RC, Klopper JP, Haugen BR

Species
Human

Dilution
Not Cited

Year
2012

[View more Flow references on thermofisher.com](#)

More applications with references on thermofisher.com

Misc (1)

For Research Use Only. Not for use in diagnostic procedures. Not for resale without express authorization. Products are warranted to operate or perform substantially in conformance with published Product specifications in effect at the time of sale, as set forth in the Production documentation, specifications and/or accompanying package inserts ("Documentation"). No claim of suitability for use in applications regulated by FDA is made. The warranty provided herein is valid only when used by properly trained individuals. Unless otherwise stated in the Documentation, this warranty is limited to one year from date of shipment when the Product is subjected to normal, proper and intended usage. This warranty does not extend to anyone other than the Buyer. Any model or sample furnished to Buyer is merely illustrative of the general type and quality of goods and does not represent that any Product will conform to such model or sample. NO OTHER WARRANTIES, EXPRESS OR IMPLIED, ARE GRANTED INCLUDING WITHOUT LIMITATION, IMPLIED WARRANTIES OF MERCHANTABILITY, FITNESS FOR ANY PARTICULAR PURPOSE, OR NON INFRINGEMENT. BUYER'S EXCLUSIVE REMEDY FOR NON-CONFORMING PRODUCTS DURING THE WARRANTY PERIOD IS LIMITED TO REPAIR, REPLACEMENT OF OR REFUND FOR THE NON-CONFORMING PRODUCT(S) AT SELLER'S SOLE OPTION. THERE IS NO OBLIGATION TO REPAIR, REPLACE OR REFUND FOR PRODUCTS AS THE RESULT OF (I) ACCIDENT, DISASTER OR EVENT OF FORCE MAJEURE, (II) MISUSE, FAULT OR NEGLIGENCE OF OR BY BUYER, (III) USE OF THE PRODUCTS IN A MANNER FOR WHICH THEY WERE NOT DESIGNED, OR (IV) IMPROPER STORAGE AND HANDLING OF THE PRODUCTS. Unless otherwise expressly stated on the Product or in the documentation accompanying the Product, the Product is intended for research only and is not to be used for any other purpose, including without limitation, unauthorized commercial uses, in vitro diagnostic uses, ex vivo or in vivo therapeutic uses, or any type of consumption by or application to human or animals.