

Ki-67 Monoclonal Antibody (SolA15), Biotin, eBioscience™

Product Details

Size	100 µg
Species Reactivity	Dog, Cynomolgus Monkey, Human, Mouse, Non-human primate, Rat
Published Species	Artificial Control, Rat, Fish, Mouse, Human
Host/Isotype	Rat / IgG2a, kappa
Recommended Isotype Control	Rat IgG2a kappa Isotype Control (eBR2a), Biotin, eBioscience™
Class	Monoclonal
Type	Antibody
Clone	SolA15
Conjugate	Biotin
Form	Liquid
Concentration	0.5 mg/mL
Purification	Affinity chromatography
Storage buffer	PBS, pH 7.2, with 0.1% gelatin
Contains	0.09% sodium azide
Storage Conditions	4° C, store in dark, DO NOT FREEZE!
RRID	AB_2572794

Applications	Tested Dilution	Publications
Western Blot (WB)	-	1 Publication
Immunohistochemistry (IHC)	-	18 Publications
Immunohistochemistry (Paraffin) (IHC (P))	Assay-Dependent	1 Publication
Immunohistochemistry (Frozen) (IHC (F))	Assay-Dependent	-
Immunocytochemistry (ICC)	5 µg/mL	4 Publications
Immunofluorescence (IF)	5 µg/mL	29 Publications
Flow Cytometry (Flow)	0.125 µg/test	34 Publications
Functional Assay (FN)	-	1 Publication

Product Specific Information

Description: The monoclonal antibody SolA15 recognizes mouse and rat Ki-67, a 300 kDa nuclear protein. Ki-67 is present during all active phases of the cell cycle (G1, S, G2, and mitosis), but is absent from resting cells (G0). Ki-67 is detected within the nucleus during interphase but redistributes to the chromosomes during mitosis. Ki-67 is used as a marker for determining the growth fraction of a given population of cells. In studies of tumor cells, the "Ki-67 labeling index" refers to the number of Ki-67 positive cells within the population and this is used to predict outcome of particular cancer types. Ki-67 has been shown to interact with the DNA-bound protein chromobox protein homolog 3 (CBX3) (heterochromatin).

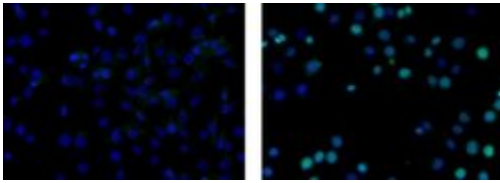
The SolA15 antibody also recognizes human, non-human primate and canine Ki-67.

Applications Reported: This SolA15 antibody has been reported for use in intracellular staining followed by flow cytometric analysis, immunohistochemical staining of frozen tissue sections, immunohistochemical staining of formalin-fixed paraffin embedded tissue sections, microscopy, and immunocytochemistry.

Applications Tested: This SolA15 antibody has been tested immunocytochemistry of fixed and permeabilized C2C12 cells and can be used at less than or equal to 5 µg/mL or intracellular staining and flow cytometric analysis of stimulated mouse splenocytes cells using the Foxp3/Transcription Factor Buffer Set (cat. 00-5523) and protocol. Please see Best Protocols Section (Staining intracellular Antigens for Flow Cytometry) for staining protocol (refer to Protocol B: One-step protocol for intracellular (nuclear) proteins). This can be used at less than or equal to 0.125 µg per test. It is recommended that the antibody be carefully titrated for optimal performance in the assay of interest.

Filtration: 0.2 µm post-manufacturing filtered.

Product Images For Ki-67 Monoclonal Antibody (SolA15), Biotin, eBioscience™



Ki-67 Antibody (13-5698-82) in ICC

Immunocytochemistry of fixed and permeabilized C2C12 cells stained with 5 µg/mL of Rat IgG2a K Isotype Control Biotin (left) or 5 µg/mL of Anti-Mouse/Rat Ki-67 Biotin (right) followed by Streptavidin FITC. Nuclei are stained with DAPI, colocalization of signal with DAPI appears aqua.

[View more figures on thermofisher.com](https://www.thermofisher.com)

Western Blot (1)

eLife
The cell proliferation antigen Ki-67 organises heterochromatin.
 "Published figure using Ki-67 monoclonal antibody (Product # 13-5698-82) in Flow Cytometry"
 Authors: Sobecki M, Mrouj K, Camasses A, Parisi N, Nicolas E, Lières D, Gerbe F, Prieto S, Krasinska L, David A, Eguren M, Birling MC, Urbach S, Hem S, Déjardin J, Malumbres M, Jay P, Dulic V, Lafontaine DLJ, Feil R, Fisher D

Species
 Human
 Mouse
 Not Applicable

Dilution
 Not Cited
 Not Cited

Year
 2016

Immunohistochemistry (18)

Nature communications
SORLA regulates endosomal trafficking and oncogenic fitness of HER2.
 "Published figure using Ki-67 monoclonal antibody (Product # 13-5698-82) in Immunohistochemistry"
 Authors: Pietilä M, Sahgal P, Peuhu E, Jääntti NZ, Paatero I, Närvä E, Al-Akhrass H, Lijja J, Georgiadou M, Andersen OM, Padzik A, Sihto H, Joensuu H, Blomqvist M, Saarinen I, Boström PJ, Taimen P, Ivaska J

Species
 Artificial Control

Dilution
 Not Cited

Year
 2019

Nature communications
The adhesion G protein-coupled receptor GPR56 is a cell-autonomous regulator of oligodendrocyte development.
 "Published figure using Ki-67 monoclonal antibody (Product # 13-5698-82) in Immunofluorescence"
 Authors: Giera S, Deng Y, Luo R, Ackerman SD, Mogha A, Monk KR, Ying Y, Jeong SJ, Makinodan M, Bialas AR, Chang BS, Stevens B, Corfas G, Piao X

Species
 Not Applicable

Dilution
 Not Cited

Year
 2015

[View more IHC references on thermofisher.com](#)

Immunohistochemistry (Paraffin) (1)

Journal of translational medicine
Selective pharmacological inhibition of DDR1 prevents experimentally-induced glomerulonephritis in prevention and therapeutic regime.
 "Published figure using Ki-67 monoclonal antibody (Product # 13-5698-82) in Immunohistochemistry (Paraffin)"
 Authors: Moll S, Yasui Y, Abed A, Murata T, Shimada H, Maeda A, Fukushima N, Kanamori M, Uhles S, Badi L, Cagarelli T, Formentini I, Drawnel F, Georges G, Bergauer T, Gasser R, Bonfil RD, Fridman R, Richter H, Funk J, Moeller MJ, Chatziantoniou C, Prunotto M

Species
 Not Applicable

Dilution
 Not Cited

Year
 2018

More applications with references on thermofisher.com

ICC (4) IF (29) Flow (34) FN (1)

For Research Use Only. Not for use in diagnostic procedures. Not for resale without express authorization. Products are warranted to operate or perform substantially in conformance with published Product specifications in effect at the time of sale, as set forth in the Production documentation, specifications and/or accompanying package inserts ("Documentation"). No claim of suitability for use in applications regulated by FDA is made. The warranty provided herein is valid only when used by properly trained individuals. Unless otherwise stated in the Documentation, this warranty is limited to one year from date of shipment when the Product is subjected to normal, proper and intended usage. This warranty does not extend to anyone other than the Buyer. Any model or sample furnished to Buyer is merely illustrative of the general type and quality of goods and does not represent that any Product will conform to such model or sample. NO OTHER WARRANTIES, EXPRESS OR IMPLIED, ARE GRANTED INCLUDING WITHOUT LIMITATION, IMPLIED WARRANTIES OF MERCHANTABILITY, FITNESS FOR ANY PARTICULAR PURPOSE, OR NON INFRINGEMENT. BUYER'S EXCLUSIVE REMEDY FOR NON-CONFORMING PRODUCTS DURING THE WARRANTY PERIOD IS LIMITED TO REPAIR, REPLACEMENT OF OR REFUND FOR THE NON-CONFORMING PRODUCT(S) AT SELLER'S SOLE OPTION. THERE IS NO OBLIGATION TO REPAIR, REPLACE OR REFUND FOR PRODUCTS AS THE RESULT OF (I) ACCIDENT, DISASTER OR EVENT OF FORCE MAJEURE, (II) MISUSE, FAULT OR NEGLIGENCE OF OR BY BUYER, (III) USE OF THE PRODUCTS IN A MANNER FOR WHICH THEY WERE NOT DESIGNED, OR (IV) IMPROPER STORAGE AND HANDLING OF THE PRODUCTS. Unless otherwise expressly stated on the Product or in the documentation accompanying the Product, the Product is intended for research only and is not to be used for any other purpose, including without limitation, unauthorized commercial uses, in vitro diagnostic uses, ex vivo or in vivo therapeutic uses, or any type of consumption by or application to human or animals.