

# CCL2 (MCP-1) Monoclonal Antibody (2H5), Biotin, eBioscience™

## Product Details

Size	500 µg
Species Reactivity	Human, Mouse, Rat
Published Species	Human, Mouse
Host/Isotype	Armenian hamster / IgG
Recommended Isotype Control	Armenian Hamster IgG Isotype Control (eBio299Arm), Biotin, eBioscience™
Class	Monoclonal
Type	Antibody
Clone	2H5
Conjugate	Biotin
Form	Liquid
Concentration	0.5 mg/mL
Purification	Affinity chromatography
Storage buffer	PBS, pH 7.2
Contains	0.09% sodium azide
Storage conditions	4° C, store in dark, DO NOT FREEZE!
RRID	AB_466915

Applications	Tested Dilution	Publications
Western Blot (WB)	-	1 Publication
Immunohistochemistry (IHC)	-	1 Publication
Immunocytochemistry (ICC/IF)	-	1 Publication
Flow Cytometry (Flow)	Assay-dependent	1 Publication
ELISA (ELISA)	0.5-2 µg/mL	5 Publications

## Product Specific Information

**Description:** The 2H5 monoclonal antibody reacts with mouse, rat, and human monocyte chemoattractant protein-1 (MCP-1), also known as CCL2 and MCAF.

**Applications Reported:** The 2H5 antibody has been reported for use in ELISA, intracellular staining for flow cytometric analysis, and cytokine neutralization. (Please use Functional Grade purified 2H5, cat. 16-7096, in functional assays.).

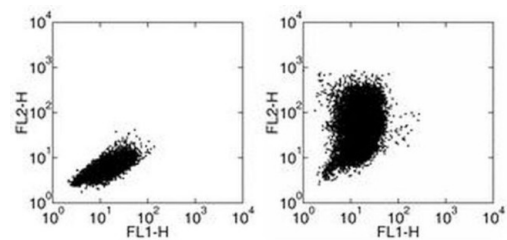
**Applications Tested:** Mouse MCP-1 ELISA: The biotinylated 2H5 antibody has been tested as the detection antibody in a sandwich ELISA for analysis of mouse MCP-1 in combination with the affinity purified 4E2/MCP (14-7091) antibody for capture and recombinant mouse MCP-1 as the standard. A suitable range of concentrations of this antibody for ELISA detection is 0.5-2.0 µg/mL. A standard curve consisting of doubling dilutions of the recombinant standard over the range of 2000 pg/mL - 15 pg/mL should be included in each ELISA plate.

Human MCP-1 ELISA: The biotinylated 2H5 antibody has been tested as the detection antibody in a sandwich ELISA for analysis of human MCP-1 in combination with the affinity purified 5D3-F7 (14-7099) antibody for capture and recombinant human MCP-1 as the standard. A suitable range of concentrations of this antibody for ELISA detection is 0.5-2.0 µg/mL. A standard curve consisting of doubling dilutions of the recombinant standard over the range of 2000 pg/mL - 15 pg/mL should be included in each ELISA plate.

The Functional Grade purified 2H5 antibody has been tested for neutralization of MCP-1 bioactivity. The fluorochrome-conjugated 2H5 antibody has been tested for intracellular staining and flow cytometric analysis of mouse, rat, and human cells and can be used at less than or equal to 0.5 µg per test. A test is defined as the amount (µg) of antibody that will stain a cell sample in a final volume of 100 µL. Cell number should be determined empirically but can range from 10<sup>5</sup> to 10<sup>8</sup> cells/test. It is recommended that the antibody be carefully titrated for optimal performance in the assay of interest.

Filtration: 0.2 µm post-manufacturing filtered.

**Product Images For CCL2 (MCP-1) Monoclonal Antibody (2H5), Biotin, eBioscience™**



**CCL2 (MCP-1) Antibody (13-7096-85) in Flow**  
Staining of mouse thioglycolate induced peritoneal exudate cells (PECs) stimulated with LPS in the presence of Brefeldin A for 24 hours. with Anti-mouse F4/80 FITC (Product # 11-4801-82) followed by intracellular staining with Rat IgG2a kappa Isotype Control PE (Product # 12-4321-82) (left) or Anti-Mouse CCL2 PE.

[View more figures on thermofisher.com](https://thermofisher.com)

Western Blot (1)

<p>Cells</p> <p><b>Cholangiocyte-Derived Exosomal lncRNA H19 Promotes Macrophage Activation and Hepatic Inflammation under Cholestatic Conditions.</b></p> <p>"Published figure using CCL2 (MCP-1) monoclonal antibody (Product # 13-7096-81) in Western Blot"</p> <p>Authors: Li X,Liu R,Wang Y,Zhu W,Zhao D,Wang X,Yang H,Gurley EC,Chen W,Hylemon PB,Zhou H</p>	<p>Year</p> <p>2020</p>
--	-------------------------

Immunohistochemistry (1)

<p>Journal of extracellular vesicles</p> <p><b>Apoptotic vesicles restore liver macrophage homeostasis to counteract type 2 diabetes.</b></p> <p>"Published figure using CCL2 (MCP-1) monoclonal antibody (Product # 13-7096-81) in Immunohistochemistry"</p> <p>Authors: Zheng C,Sui B,Zhang X,Hu J,Chen J,Liu J,Wu D,Ye Q,Xiang L,Qiu X,Liu S,Deng Z,Zhou J,Liu S,Shi S,Jin Y</p>	<p>Year</p> <p>2021</p>
---	-------------------------

Immunocytochemistry (1)

<p>Journal of extracellular vesicles</p> <p><b>Apoptotic vesicles restore liver macrophage homeostasis to counteract type 2 diabetes.</b></p> <p>"Published figure using CCL2 (MCP-1) monoclonal antibody (Product # 13-7096-81) in Immunohistochemistry"</p> <p>Authors: Zheng C,Sui B,Zhang X,Hu J,Chen J,Liu J,Wu D,Ye Q,Xiang L,Qiu X,Liu S,Deng Z,Zhou J,Liu S,Shi S,Jin Y</p>	<p>Year</p> <p>2021</p>
---	-------------------------

Flow Cytometry (1)

<p>Molecular medicine reports</p> <p><b>Conditioned medium from umbilical cord mesenchymal stem cells induces migration and angiogenesis.</b></p> <p>"Published figure using CCL2 (MCP-1) monoclonal antibody (Product # 13-7096-81) in Flow Cytometry"</p> <p>Authors: Shen C,Lie P,Miao T,Yu M,Lu Q,Feng T,Li J,Zu T,Liu X,Li H</p>	<p>Year</p> <p>2015</p> <p>Species</p> <p>Human</p>
---	---

More applications with references on thermofisher.com

ELISA (5)

For Research Use Only. Not for use in diagnostic procedures. Not for resale without express authorization. Products are warranted to operate or perform substantially in conformance with published Product specifications in effect at the time of sale, as set forth in the Production documentation, specifications and/or accompanying package inserts ("Documentation"). No claim of suitability for use in applications regulated by FDA is made. The warranty provided herein is valid only when used by properly trained individuals. Unless otherwise stated in the Documentation, this warranty is limited to one year from date of shipment when the Product is subjected to normal, proper and intended usage. This warranty does not extend to anyone other than the Buyer. Any model or sample furnished to Buyer is merely illustrative of the general type and quality of goods and does not represent that any Product will conform to such model or sample. NO OTHER WARRANTIES, EXPRESS OR IMPLIED, ARE GRANTED INCLUDING WITHOUT LIMITATION, IMPLIED WARRANTIES OF MERCHANTABILITY, FITNESS FOR ANY PARTICULAR PURPOSE, OR NON-INFRINGEMENT. BUYER'S EXCLUSIVE REMEDY FOR NON-CONFORMING PRODUCTS DURING THE WARRANTY PERIOD IS LIMITED TO REPAIR, REPLACEMENT OF OR REFUND FOR THE NON-CONFORMING PRODUCT(S) AT SELLER'S SOLE OPTION. THERE IS NO OBLIGATION TO REPAIR, REPLACE OR REFUND FOR PRODUCTS AS THE RESULT OF (I) ACCIDENT, DISASTER OR EVENT OF FORCE MAJEURE, (II) MISUSE, FAULT OR NEGLIGENCE OF OR BY BUYER, (III) USE OF THE PRODUCTS IN A MANNER FOR WHICH THEY WERE NOT DESIGNED, OR (IV) IMPROPER STORAGE AND HANDLING OF THE PRODUCTS. Unless otherwise expressly stated on the Product or in the documentation accompanying the Product, the Product is intended for research only and is not to be used for any other purpose, including without limitation, unauthorized commercial uses, in vitro diagnostic uses, ex vivo or in vivo therapeutic uses, or any type of consumption by or application to human or animals.