

CD45R (B220) Monoclonal Antibody (RA3-6B2), eBioscience™

Product Details	
Size	100 µg
Species Reactivity	Human, Mouse
Published Species	Fish, Mouse, Human
Host/Isotope	Rat / IgG2a, kappa
Class	Monoclonal
Type	Antibody
Clone	RA3-6B2
Conjugate	Unconjugated
Form	Liquid
Concentration	0.5 mg/mL
Purification	Affinity chromatography
Storage buffer	PBS, pH 7.2
Contains	0.09% sodium azide
Storage Conditions	4° C
RRID	AB_467254

Applications	Tested Dilution	Publications
Flow Cytometry (Flow)	1 µg/test	181 Publications
Immunohistochemistry (Frozen) (IHC (F))	5 µg/mL	6 Publications
Immunohistochemistry (Paraffin) (IHC (P))	5 µg/mL	2 Publications
Immunoprecipitation (IP)	Assay-Dependent	-
ELISA (ELISA)	-	1 Publication
Immunocytochemistry (ICC)	-	2 Publications
Immunofluorescence (IF)	-	16 Publications
Immunohistochemistry (IHC)	-	28 Publications
Neutralization (Neu)	-	1 Publication

Product Specific Information

Description: The RA3-6B2 monoclonal antibody reacts with exon A-restricted isoform of mouse CD45, a 220 kDa surface molecule. CD45R/B220 epitope is mainly expressed by the B cell lineage from early Pro-B to mature B cells. However, some activated T cells, lymphokine activated killer cells (LAK), NK cell progenitors in the bone marrow, and T cells of the lpr/lpr mutant mouse also express this antigen.

Applications Reported: The RA3-6B2 antibody has been reported for use in flow cytometric analysis, immunoprecipitation, and immunohistochemical staining of frozen or formalin-fixed paraffin embedded tissue sections. RA3-6B2 has also been reported in functional studies of B cells. (Please use Functional Grade purified RA3-6B2, cat. 16-0452, in functional assays.)

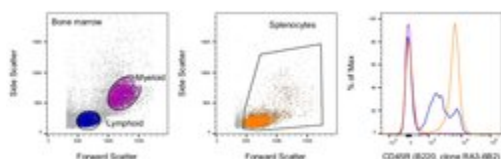
Applications Tested: The RA3-6B2 antibody has been tested by flow cytometric analysis of mouse splenocytes. This can be used at less than or equal to 1 µg per test. A test is defined as the amount (µg) of antibody that will stain a cell sample in a final volume of 100 µL. Cell number should be determined empirically but can range from 10⁵ to 10⁸ cells/test. The RA3-6B2 antibody has been tested by immunohistochemistry of formalin-fixed paraffin embedded mouse tissue using low and high pH antigen retrieval and can be used at less than or equal to 5 µg/mL. The RA3-6B2 antibody has been tested by immunohistochemistry of frozen mouse tissue and can be used at less than or equal to 5 µg/mL. It is recommended that the antibody be carefully titrated for optimal performance in the assay of interest.

Purity: Greater than 90%, as determined by SDS-PAGE.

Aggregation: Less than 10%, as determined by HPLC.

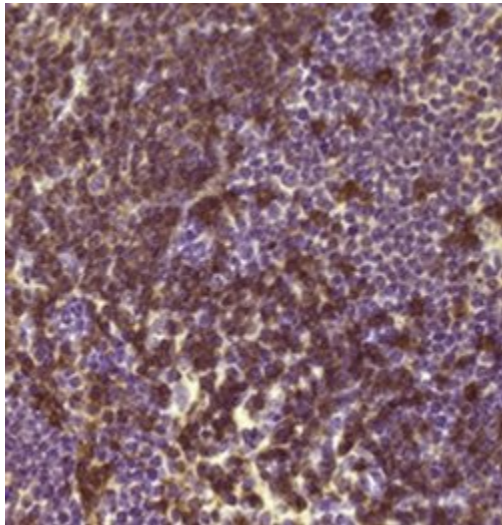
Filtration: 0.2 µm post-manufacturing filtered.

✓ Advanced Verification Data



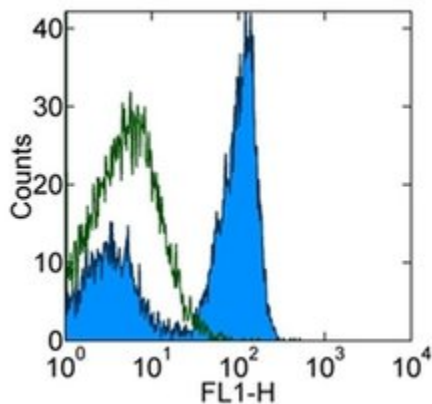
CD45R (B220) Antibody (14-0452-82)

Staining of mouse splenocytes and bone marrow cells. As expected based on known relative expression patterns, CD45R (B220) clone RA3-6B2 stains subsets in both the splenocytes gate and the bone marrow lymphoid gate but not the bone marrow myeloid gate. Details: Balb/c bone marrow cells (left) and splenocytes (middle) were surface stained with CD45R (B220, clone RA3-6B2) followed by staining with 7-AAD. Viable bone marrow cells in the lymphoid (blue histogram) and myeloid (purple histogram) gates and viable splenocytes (orange histogram) were used for analysis. Relative expression validation info.



CD45R (B220) Antibody (14-0452-82) in IHC (P)

Immunohistochemistry of formalin-fixed paraffin embedded mouse spleen using 5 µg /mL Anti-Human/Mouse CD45R (B220) Purified followed by Anti-Rat IgG Biotin, Avidin HRP, and DAB visualization. Nuclei are counterstained with hematoxylin.



CD45R (B220) Antibody (14-0452-82) in Flow

Staining of C57Bl/6 splenocytes with 0.5 µg of Rat IgG2a Isotype Control Purified (Product # 14-4321-82) (open histogram) or 0.5 µg of Anti-Human/Mouse CD45R (B220) Purified (filled histogram) followed by Anti-Rat IgG FITC (Product # 11-4811-85). Cells in the lymphocyte gate were used for analysis.

[View more figures on thermofisher.com](https://www.thermofisher.com)

Flow Cytometry (181)

Immunoendocrinology (Houston, Tex.)

PD-1 pathway-mediated regulation of islet-specific CD4⁺ T cell subsets in autoimmune diabetes.

"14-0452 was used in Flow cytometry/Cell sorting to understand the role of PD-1 in maintaining islet-specific tolerance in diabetes-resistant strains."

Authors: Martinov T,Spanier JA,Pauken KE,Fife BT

Species
Mouse

Dilution
Not Cited

Year
2019

Frontiers in immunology

Absence of the Non-Signalling Chemerin Receptor CCRL2 Exacerbates Acute Inflammatory Responses *In Vivo*.

"14-0452 was used in Flow cytometry/Cell sorting to investigate what role, if any, CCRL2 plays during acute inflammation."

Authors: Regan-Komito D,Valaris S,Kapellos TS,Recio C,Taylor L,Greaves DR,Iqbal AJ

Species
Mouse

Dilution
Not Cited

Year
2019

[View more Flow references on thermofisher.com](#)

Immunohistochemistry (28)

PLoS one

Tumor-immune profiling of murine syngeneic tumor models as a framework to guide mechanistic studies and predict therapy response in distinct tumor microenvironments.

"Published figure using CD45R (B220) monoclonal antibody (Product # 14-0452-82) in Immunohistochemistry"

Authors: Yu JW,Bhattacharya S,Yanamandra N,Kilian D,Shi H,Yadavilli S,Katlinskaya Y,Kaczynski H,Conner M,Benson W,Hahn A,Seestaller-Wehr L,Bi M,Vitali NJ,Tsvetkov L,Halsey W,Hughes A,Traini C,Zhou H,Jing J,Lee T,Figueroa DJ, Brett S,Hopson CB,Smother JF,Hoos A,Srinivasan R

Species
Mouse

Dilution
1:400

Year
2019

Cell reports

Group 2 Innate Lymphoid Cells Attenuate Inflammatory Arthritis and Protect from Bone Destruction in Mice.

"14-0452 was used in Immunohistochemistry to elucidate the role of group 2 innate lymphoid cells in arthritis."

Authors: Omata Y,Frech M,Primbs T,Lucas S,Andreev D,Scholtysek C,Sarter K,Kindermann M,Yeremenko N,Baeten DL,Andreas N,Kamradt T,Bozec A,Ramming A,Krönke G,Wirtz S,Schett G,Zaiss MM

Species
Mouse

Dilution
Not Cited

Year
2018

[View more IHC references on thermofisher.com](#)

More applications with references on thermofisher.com

IHC (P) (2)

IF (16)

ICC (2)

IHC (F) (6)

ELISA (1)

Neu (1)

For Research Use Only. Not for use in diagnostic procedures. Not for resale without express authorization. Products are warranted to operate or perform substantially in conformance with published Product specifications in effect at the time of sale, as set forth in the Production documentation, specifications and/or accompanying package inserts ("Documentation"). No claim of suitability for use in applications regulated by FDA is made. The warranty provided herein is valid only when used by properly trained individuals. Unless otherwise stated in the Documentation, this warranty is limited to one year from date of shipment when the Product is subjected to normal, proper and intended usage. This warranty does not extend to anyone other than the Buyer. Any model or sample furnished to Buyer is merely illustrative of the general type and quality of goods and does not represent that any Product will conform to such model or sample. NO OTHER WARRANTIES, EXPRESS OR IMPLIED, ARE GRANTED INCLUDING WITHOUT LIMITATION, IMPLIED WARRANTIES OF MERCHANTABILITY, FITNESS FOR ANY PARTICULAR PURPOSE, OR NON INFRINGEMENT. BUYER'S EXCLUSIVE REMEDY FOR NON-CONFORMING PRODUCTS DURING THE WARRANTY PERIOD IS LIMITED TO REPAIR, REPLACEMENT OF OR REFUND FOR THE NON-CONFORMING PRODUCT(S) AT SELLER'S SOLE OPTION. THERE IS NO OBLIGATION TO REPAIR, REPLACE OR REFUND FOR PRODUCTS AS THE RESULT OF (I) ACCIDENT, DISASTER OR EVENT OF FORCE MAJEURE, (II) MISUSE, FAULT OR NEGLIGENCE OF OR BY BUYER, (III) USE OF THE PRODUCTS IN A MANNER FOR WHICH THEY WERE NOT DESIGNED, OR (IV) IMPROPER STORAGE AND HANDLING OF THE PRODUCTS. Unless otherwise expressly stated on the Product or in the documentation accompanying the Product, the Product is intended for research only and is not to be used for any other purpose, including without limitation, unauthorized commercial uses, in vitro diagnostic uses, ex vivo or in vivo therapeutic uses, or any type of consumption by or application to human or animals.