

CD115 (c-fms) Monoclonal Antibody (12-3A3-1B10), eBioscience™

Product Details	
Size	2 mg
Species Reactivity	Human
Published Species	Human
Host/Isotype	Rat / IgG2a, kappa
Class	Monoclonal
Type	Antibody
Clone	12-3A3-1B10
Conjugate	Unconjugated
Form	Liquid
Concentration	0.5 mg/mL
Purification	Affinity chromatography
Storage buffer	PBS, pH 7.2
Contains	0.09% sodium azide
Storage conditions	4° C
RRID	AB_2864974

Applications	Tested Dilution	Publications
Western Blot (WB)	Assay-Dependent	-
Immunohistochemistry (IHC)	Assay-Dependent	-
Flow Cytometry (Flow)	1 µg/test	2 Publications
Immunoprecipitation (IP)	Assay-Dependent	-

Product Specific Information

Description: CD115 or Colony-Stimulating Factor-1 Receptor (CSF-1R) is expressed on cells committed to the monocyte lineage and osteoclasts. CSF-1R is a disulfide-linked homodimer, which upon binding of its ligand, CSF-1, undergoes tyrosine autophosphorylation and subsequently, phosphorylates other membrane-proximal downstream targets which results in cytoskeletal remodeling, gene transcription and protein translation. CSF-1R activation promotes the survival, proliferation and differentiation of mononuclear phagocytes and the spreading and motility of macrophages. In osteoclasts, CSF-1R synergizes with RANKL to regulate the differentiation of mononuclear phagocytes to osteoclasts.

Applications Reported: This 12-3A3-1B10 antibody has been reported for use in flow cytometric analysis, immunoprecipitation, immunoblotting (WB), and immunohistochemical staining.

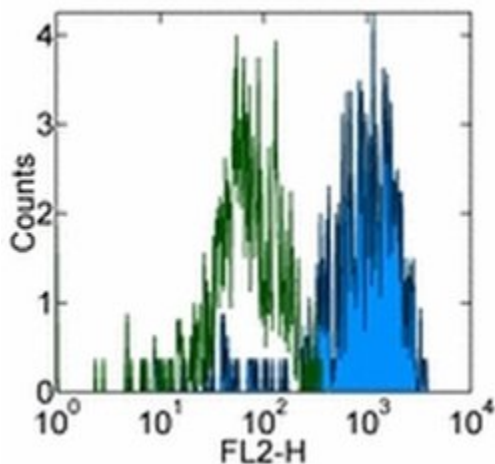
Applications Tested: This 12-3A3-1B10 antibody has been tested by flow cytometric analysis of normal human peripheral blood cells. This can be used at less than or equal to 1 µg per test. A test is defined as the amount (µg) of antibody that will stain a cell sample in a final volume of 100 µL. Cell number should be determined empirically but can range from 10⁵ to 10⁸ cells/test. It is recommended that the antibody be carefully titrated for optimal performance in the assay of interest.

Purity: Greater than 90%, as determined by SDS-PAGE.

Aggregation: Less than 10%, as determined by HPLC.

Filtration: 0.2 µm post-manufacturing filtered.

Product Images For CD115 (c-fms) Monoclonal Antibody (12-3A3-1B10), eBioscience™



CD115 (c-fms) Antibody (14-1159-37) in Flow

Staining of normal human peripheral blood cells with 0.5 µg of Rat IgG2a K Isotype Control Purified (Product # 14-4321-82) (open histogram) or 0.5 µg of Anti-Human CD115 (c-fms) Purified (filled histogram) followed by Anti-Rat IgG Biotin (Product # 13-4813-85) and Streptavidin PE (Product # 12-4317-87). Cells in the monocyte gate were used for analysis.

2 References

Flow Cytometry (2)

mAbs

A unique anti-CD115 monoclonal antibody which inhibits osteolysis and skews human monocyte differentiation from M2-polarized macrophages toward dendritic cells.

"14-1159 was used in Flow cytometry/Cell sorting to study how the non-depleting mAb H27K15 is a promising anti-tumor candidate, able to inhibit osteoclast differentiation."

Authors: Haegel H,Thioudellet C,Hallet R,Geist M,Menguy T,Le Pogam F,Marchand JB,Toh ML,Duong V,Calcei A,Settelen N,Preville X,Hennequi M,Grellier B,Ancian P,Rissanen J,Clayette P,Guillen C,Rooke R,Bonnefoy JY

Species
Human

Dilution
Not Cited

Year
2014

Blood

Comparison of gene expression profiles between human and mouse monocyte subsets.

"14-1159 was used in Flow cytometry/Cell sorting to identify how human and mouse monocyte subsets are far more broadly conserved than currently recognised."

Authors: Ingersoll MA,Spanbroek R,Lottaz C,Gautier EL,Frankenberger M,Hoffmann R,Lang R,Haniffa M,Collin M,Tacke F,Habenicht AJ,Ziegler-Heitbrock L,Randolph GJ

Species
Human

Dilution
Not Cited

Year
2010

For Research Use Only. Not for use in diagnostic procedures. Not for resale without express authorization. Products are warranted to operate or perform substantially in conformance with published Product specifications in effect at the time of sale, as set forth in the Production documentation, specifications and/or accompanying package inserts ("Documentation"). No claim of suitability for use in applications regulated by FDA is made. The warranty provided herein is valid only when used by properly trained individuals. Unless otherwise stated in the Documentation, this warranty is limited to one year from date of shipment when the Product is subjected to normal, proper and intended usage. This warranty does not extend to anyone other than the Buyer. Any model or sample furnished to Buyer is merely illustrative of the general type and quality of goods and does not represent that any Product will conform to such model or sample. NO OTHER WARRANTIES, EXPRESS OR IMPLIED, ARE GRANTED INCLUDING WITHOUT LIMITATION, IMPLIED WARRANTIES OF MERCHANTABILITY, FITNESS FOR ANY PARTICULAR PURPOSE, OR NON-INFRINGEMENT. BUYER'S EXCLUSIVE REMEDY FOR NON-CONFORMING PRODUCTS DURING THE WARRANTY PERIOD IS LIMITED TO REPAIR, REPLACEMENT OF OR REFUND FOR THE NON-CONFORMING PRODUCT(S) AT SELLER'S SOLE OPTION. THERE IS NO OBLIGATION TO REPAIR, REPLACE OR REFUND FOR PRODUCTS AS THE RESULT OF (I) ACCIDENT, DISASTER OR EVENT OF FORCE MAJEURE, (II) MISUSE, FAULT OR NEGLIGENCE OF OR BY BUYER, (III) USE OF THE PRODUCTS IN A MANNER FOR WHICH THEY WERE NOT DESIGNED, OR (IV) IMPROPER STORAGE AND HANDLING OF THE PRODUCTS. Unless otherwise expressly stated on the Product or in the documentation accompanying the Product, the Product is intended for research only and is not to be used for any other purpose, including without limitation, unauthorized commercial uses, in vitro diagnostic uses, ex vivo or in vivo therapeutic uses, or any type of consumption by or application to human or animals.