

# CD196 (CCR6) Monoclonal Antibody (R6H1), eBioscience™

Product Details	
Size	100 µg
Species Reactivity	Human
Published Species	Human
Host/Isotope	Mouse / IgG1, kappa
Class	Monoclonal
Type	Antibody
Clone	R6H1
Conjugate	Unconjugated
Form	Liquid
Concentration	0.5 mg/mL
Purification	Affinity chromatography
Storage buffer	PBS, pH 7.2
Contains	0.09% sodium azide
Storage Conditions	4° C
RRID	AB_1257199

Applications	Tested	Dilution	Published
Flow Cytometry (Flow)	✓	Assay-Dependent	1 Publication
Immunofluorescence (IF)	-		1 Publication
Western Blot (WB)	✓	5 µg/mL	2 Publications
Miscellaneous PubMed (MISC)	-		1 Publication
Immunoprecipitation (IP)	✓	Assay-Dependent	

## Product Specific Information

**Description:** This R6H1 monoclonal antibody reacts with CD196 (also known as CCR6), a seven transmembrane G protein-coupled receptor expressed on T, B, dendritic, natural killer, and Langerhans cells. This CC chemokine receptor uniquely binds MIP-3a/CCL20, a chemoattractant for dendritic cells, effector/memory T cells, and B cells. CD196 is also involved in host defense and inflammation at epithelial sites. Furthermore, this receptor has been implicated in Th17 differentiation and CD4+FoxP3+ regulatory T cell development.

**Applications Reported:** This R6H1 antibody has been reported for use in flow cytometric analysis, immunoblotting (WB), and immunoprecipitation.

**Applications Tested:** This R6H1 antibody has been tested by western blot on lysates prepared from normal human peripheral blood cells. This antibody can be used at less than or equal to 5 µg/mL.

**Purity:** Greater than 90%, as determined by SDS-PAGE.

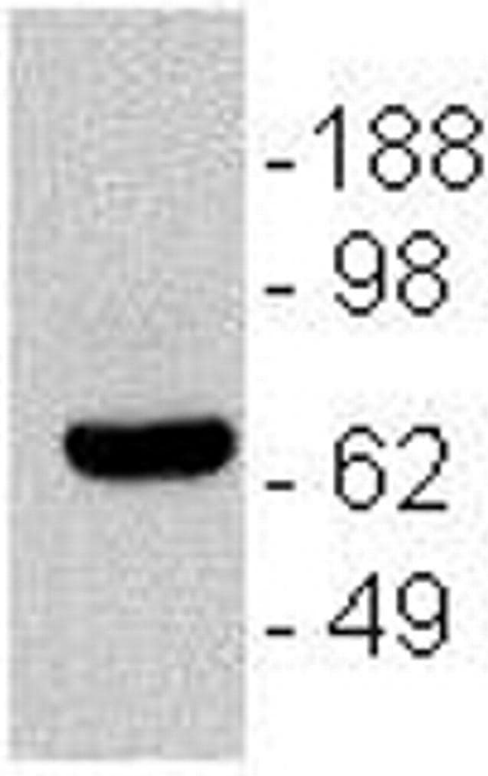
**Aggregation:** Less than 10%, as determined by HPLC.

Filtration: 0.2 µm post-manufacturing filtered.

## Product Images For CD196 (CCR6) Monoclonal Antibody (R6H1), eBioscience™

### CD196 (CCR6) Antibody (14-1969-82) in WB

Immunoblotting of 10e6 normal peripheral blood cell lysates with 5 µg/mL of Anti-Human CD196 (CCR6) Purified. The band was visualized using Anti-Mouse IgG HRP.



[View more figures on thermofisher.com](https://www.thermofisher.com)

## 5 References

### Flow Cytometry (1)

<p>PloS one</p> <p><b>CCL20 Secretion from the Nucleus Pulposus Improves the Recruitment of CCR6-Expressing Th17 Cells to Degenerated IVD Tissues.</b></p> <p>"Published figure using CD196 (CCR6) monoclonal antibody (Product # 14-1969-82) in Flow Cytometry"</p> <p>Authors: Zhang W,Nie L,Wang Y,Wang XP,Zhao H,Dongol S,Maharjan S,Cheng L</p>	<p><b>Species</b> Not Applicable</p> <p><b>Dilution</b> Not Cited</p> <p><b>Year</b> 2017</p>
--	---

### Immunofluorescence (1)

<p>PloS one</p> <p><b>CCL20 Secretion from the Nucleus Pulposus Improves the Recruitment of CCR6-Expressing Th17 Cells to Degenerated IVD Tissues.</b></p> <p>"Published figure using CD196 (CCR6) monoclonal antibody (Product # 14-1969-82) in Flow Cytometry"</p> <p>Authors: Zhang W,Nie L,Wang Y,Wang XP,Zhao H,Dongol S,Maharjan S,Cheng L</p>	<p><b>Species</b> Not Applicable</p> <p><b>Dilution</b> Not Cited</p> <p><b>Year</b> 2017</p>
--	---

### Western Blot (2)

<p>PLoS genetics</p> <p><b>The Rheumatoid Arthritis Risk Variant CCR6DNP Regulates CCR6 via PARP-1.</b></p> <p>"14-1969 was used in Western Blotting to investigate whether CCR6DNP is causal for rheumatoid arthritis."</p> <p>Authors: Li G,Cunin P,Wu D,Diogo D,Yang Y,Okada Y,Plenge RM,Nigrovic PA</p>	<p><b>Species</b> Human</p> <p><b>Dilution</b> Not Cited</p> <p><b>Year</b> 2016</p>
---	--

<p>PloS one</p> <p><b>CCR6 is a prognostic marker for overall survival in patients with colorectal cancer, and its overexpression enhances metastasis in vivo.</b></p> <p>"Published figure using CD196 (CCR6) monoclonal antibody (Product # 14-1969-82) in Western Blot"</p> <p>Authors: Liu J,Ke F,Xu Z,Liu Z,Zhang L,Yan S,Wang Z,Wang H,Wang H</p>	<p><b>Species</b> Human</p> <p><b>Dilution</b> Not Cited</p> <p><b>Year</b> 2015</p>
---	--

### More applications with references on thermofisher.com

### MISC (1)

For Research Use Only. Not for use in diagnostic procedures. Not for resale without express authorization. Products are warranted to operate or perform substantially in conformance with published Product specifications in effect at the time of sale, as set forth in the Production documentation, specifications and/or accompanying package inserts ("Documentation"). No claim of suitability for use in applications regulated by FDA is made. The warranty provided herein is valid only when used by properly trained individuals. Unless otherwise stated in the Documentation, this warranty is limited to one year from date of shipment when the Product is subjected to normal, proper and intended usage. This warranty does not extend to anyone other than the Buyer. Any model or sample furnished to Buyer is merely illustrative of the general type and quality of goods and does not represent that any Product will conform to such model or sample. NO OTHER WARRANTIES, EXPRESS OR IMPLIED, ARE GRANTED INCLUDING WITHOUT LIMITATION, IMPLIED WARRANTIES OF MERCHANTABILITY, FITNESS FOR ANY PARTICULAR PURPOSE, OR NON INFRINGEMENT. BUYER'S EXCLUSIVE REMEDY FOR NON-CONFORMING PRODUCTS DURING THE WARRANTY PERIOD IS LIMITED TO REPAIR, REPLACEMENT OF OR REFUND FOR THE NON-CONFORMING PRODUCT(S) AT SELLER'S SOLE OPTION. THERE IS NO OBLIGATION TO REPAIR, REPLACE OR REFUND FOR PRODUCTS AS THE RESULT OF (I) ACCIDENT, DISASTER OR EVENT OF FORCE MAJEURE, (II) MISUSE, FAULT OR NEGLIGENCE OF OR BY BUYER, (III) USE OF THE PRODUCTS IN A MANNER FOR WHICH THEY WERE NOT DESIGNED, OR (IV) IMPROPER STORAGE AND HANDLING OF THE PRODUCTS. Unless otherwise expressly stated on the Product or in the documentation accompanying the Product, the Product is intended for research only and is not to be used for any other purpose, including without limitation, unauthorized commercial uses, in vitro diagnostic uses, ex vivo or in vivo therapeutic uses, or any type of consumption by or application to human or animals.