

MASH1 Monoclonal Antibody (24B72D11), eBioscience™

Product Details	
Size	100 µg
Species Reactivity	Mouse, Rat
Published Species	Mouse
Host/Isotype	Mouse / IgG1, kappa
Class	Monoclonal
Type	Antibody
Clone	24B72D11
Conjugate	Unconjugated
Form	Liquid
Concentration	0.5 mg/mL
Purification	Affinity chromatography
Storage buffer	PBS, pH 7.2
Contains	0.09% sodium azide
Storage Conditions	4° C
RRID	AB_2572887

Applications	Tested Dilution	Publications
Immunocytochemistry (ICC)	20 µg/mL	-
Immunofluorescence (IF)	20 µg/mL	1 Publication
Immunohistochemistry (Frozen) (IHC (F))	Assay-Dependent	-
Western Blot (WB)	5 µg/mL	-
Immunohistochemistry (IHC)	-	2 Publications

Product Specific Information

Description: The monoclonal antibody 24B72D11 recognizes mouse and rat Mammalian achaete-scute homolog 1 (MASH1), a 34 kDa basic helix-loop-helix (bHLH) transcription factor. MASH1, like family members Olig2 and Ngn2, is expressed in progenitor cells throughout the nervous system and retina and is a key regulator of cell fate specification. Expression of MASH1 is regulated by the Delta/Notch1 pathway through direct binding of Hes1 to MASH1 as well as competitive binding to MASH1 hetero-dimerizing proteins. At a transcriptional level, MASH1 expression is controlled by notch-mediated regulation of sox2, which binds to the MASH1 promoter region up-regulating expression. MASH1 has been implicated in the formation of multiple neural cell types including dopaminergic, serotonergic, glutaminergic and GABAergic neurons. Overexpression of MASH1 has been shown in small cell lung carcinoma and medullary thyroid cancer.

Applications Reported: This 24B72D11 antibody has been reported for use in western blotting, immunohistochemical staining of frozen tissue sections, and immunocytochemistry.

Applications Tested: This 24B72D11 antibody has been tested by western blot on reduced PC12 cells and can be used at less than or equal to 5 µg/mL. The 24B72D11 antibody has also been tested by immunocytochemistry on fixed and permeabilized PC12 cells at can be used at less than or equal to 20 µg/mL. It is recommended that the antibody be carefully titrated for optimal

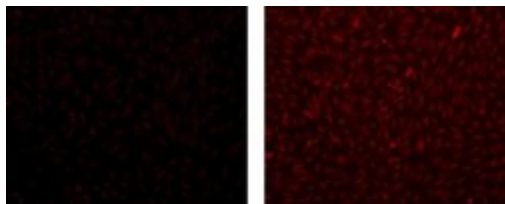
performance in the assay of interest.

Purity: Greater than 90%, as determined by SDS-PAGE.

Aggregation: Less than 10%, as determined by HPLC.

Filtration: 0.2 µm post-manufacturing filtered.

Product Images For MASH1 Monoclonal Antibody (24B72D11), eBioscience™



MASH1 Antibody (14-5794-82) in ICC

Immunocytochemistry of PC-12 cells stained with 20 µg/mL Mouse IgG1 Isotype Control (left) or 20 µg/mL Anti-Mouse/Rat MASH1 Purified (right) followed by Anti-Mouse IgG TRITC.

[View more figures on thermofisher.com](https://www.thermofisher.com)

3 References

Immunohistochemistry (2)

eLife

Jagged and Delta-like ligands control distinct events during airway progenitor cell differentiation.

"Published figure using MASH1 monoclonal antibody (Product # 14-5794-82) in Immunofluorescence"

Authors: Stupnikov MR, Yang Y, Mori M, Lu J, Cardoso WV

Species
Not Applicable

Dilution
Not Cited

Year
2019

Nature neuroscience

Neural stem cells sustain natural killer cells that dictate recovery from brain inflammation.

"14-5794 was used in Immunohistochemistry to reveal that reciprocal interactions between neural stem cells and natural killer cells regulate neurorepair."

Authors: Liu Q, Sanai N, Jin WN, La Cava A, Van Kaer L, Shi FD

Species
Mouse

Dilution
1:100

Year
2016

Immunofluorescence (1)

eLife

Jagged and Delta-like ligands control distinct events during airway progenitor cell differentiation.

"Published figure using MASH1 monoclonal antibody (Product # 14-5794-82) in Immunofluorescence"

Authors: Stupnikov MR, Yang Y, Mori M, Lu J, Cardoso WV

Species
Not Applicable

Dilution
Not Cited

Year
2019

For Research Use Only. Not for use in diagnostic procedures. Not for resale without express authorization. Products are warranted to operate or perform substantially in conformance with published Product specifications in effect at the time of sale, as set forth in the Production documentation, specifications and/or accompanying package inserts ("Documentation"). No claim of suitability for use in applications regulated by FDA is made. The warranty provided herein is valid only when used by properly trained individuals. Unless otherwise stated in the Documentation, this warranty is limited to one year from date of shipment when the Product is subjected to normal, proper and intended usage. This warranty does not extend to anyone other than the Buyer. Any model or sample furnished to Buyer is merely illustrative of the general type and quality of goods and does not represent that any Product will conform to such model or sample. NO OTHER WARRANTIES, EXPRESS OR IMPLIED, ARE GRANTED INCLUDING WITHOUT LIMITATION, IMPLIED WARRANTIES OF MERCHANTABILITY, FITNESS FOR ANY PARTICULAR PURPOSE, OR NON INFRINGEMENT. BUYER'S EXCLUSIVE REMEDY FOR NON-CONFORMING PRODUCTS DURING THE WARRANTY PERIOD IS LIMITED TO REPAIR, REPLACEMENT OF OR REFUND FOR THE NON-CONFORMING PRODUCT(S) AT SELLER'S SOLE OPTION. THERE IS NO OBLIGATION TO REPAIR, REPLACE OR REFUND FOR PRODUCTS AS THE RESULT OF (I) ACCIDENT, DISASTER OR EVENT OF FORCE MAJEURE, (II) MISUSE, FAULT OR NEGLIGENCE OF OR BY BUYER, (III) USE OF THE PRODUCTS IN A MANNER FOR WHICH THEY WERE NOT DESIGNED, OR (IV) IMPROPER STORAGE AND HANDLING OF THE PRODUCTS. Unless otherwise expressly stated on the Product or in the documentation accompanying the Product, the Product is intended for research only and is not to be used for any other purpose, including without limitation, unauthorized commercial uses, in vitro diagnostic uses, ex vivo or in vivo therapeutic uses, or any type of consumption by or application to human or animals.