

Ly-6G/Ly-6C Monoclonal Antibody (RB6-8C5), eBioscience™

Product Details

Size	100 µg
Species Reactivity	Mouse
Published Species	Dog, Fish, Mouse, Human
Host/Isotope	Rat / IgG2b, kappa
Class	Monoclonal
Type	Antibody
Clone	RB6-8C5
Conjugate	Unconjugated
Form	Liquid
Concentration	0.5 mg/mL
Purification	Affinity chromatography
Storage buffer	PBS, pH 7.2
Contains	0.09% sodium azide
Storage Conditions	4° C
RRID	AB_467730

Applications	Tested	Dilution	Published
Flow Cytometry (Flow)	✓	0.5 µg/test	169 Publications
Immunofluorescence (IF)	-	1:100	27 Publications
Immunohistochemistry (IHC)	-	1:100	24 Publications
Immunohistochemistry (Paraffin) (IHC (P))	✓	10 µg/mL	5 Publications
Immunohistochemistry (Frozen) (IHC (F))	✓	10 µg/mL	8 Publications
Miscellaneous PubMed (MISC)	-		4 Publications
Functional Assay (FN)	✓	Assay-Dependent	18 Publications
Immunocytochemistry (ICC)	-	1:100	3 Publications
In Situ Hybridization (ISH) (ISH)	-		1 Publication
Neutralization (Neu)	-		4 Publications
Immunoprecipitation (IP)	✓	Assay-Dependent	2 Publications
Inhibition Assays (IA)	-		1 Publication
Western Blot (WB)	✓	Assay-Dependent	

Product Specific Information

Description: The RB6-8C5 monoclonal antibody reacts with mouse Ly-6G, a 21-25 kDa protein also known as the myeloid differentiation antigen Gr-1. A GPI-linked protein, Gr-1 is expressed by the myeloid lineage in a developmentally regulated manner in the bone marrow. While monocytes only express Gr-1 transiently during their bone marrow development, the expression of Gr-1 on bone marrow granulocytes as well as on peripheral neutrophils is a good marker for these populations.

eBioscience testing indicates that in the bone marrow and lysed whole blood, the antibody clone RB6-8C5 also stains cells that express the highest levels of Ly6c (as defined by staining with antibody clone HK1.4). It is recommended that 1A8-Ly6G (cat. 9668) be used when looking at Ly-6G specific targets.

Applications Reported: The RB6-8C5 antibody has been reported for use in flow cytometric analysis, immunoprecipitation, immunoblotting (WB), and immunohistochemical staining of frozen or formalin-fixed paraffin embedded tissue. It has also been reported in cell depletion. (Please use Functional Grade purified RB6-8C5, cat. 16-5931, in functional assays.).

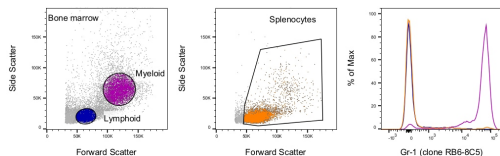
Applications Tested: The RB6-8C5 antibody has been tested by flow cytometric analysis of mouse bone marrow cells and splenocytes. This can be used at less than or equal to 0.5 µg per test. A test is defined as the amount (µg) of antibody that will stain a cell sample in a final volume of 100 µL. Cell number should be determined empirically but can range from 10⁵ to 10⁸ cells /test. The RB6-8C5 antibody has been tested by immunohistochemistry of formalin-fixed paraffin embedded mouse tissue using low or high pH antigen retrieval and can be used at less than or equal to 10 µg/mL. It is recommended that the antibody be carefully titrated for optimal performance in the assay of interest.

Purity: Greater than 90%, as determined by SDS-PAGE.

Aggregation: Less than 10%, as determined by HPLC.

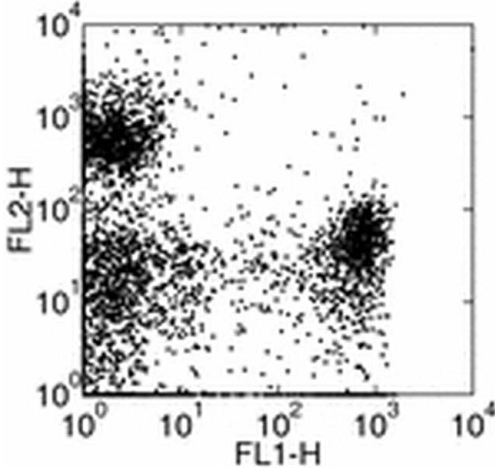
Filtration: 0.2 µm post-manufacturing filtered.

✓ Advanced Verification Data



Ly-6G/Ly-6C Antibody (14-5931-82)

Staining of mouse splenocytes and bone marrow cells. As expected based on known relative expression patterns, Gr-1 clone RB6-8C5 stains cells in the bone marrow myeloid gate and not in the splenocytes gate or bone marrow lymphoid gate. Details: Balb/c bone marrow cells (left) and splenocytes (middle) were surface stained with Gr-1 (clone RB6-8C5) followed by staining with 7-AAD. Viable bone marrow cells in the lymphoid (blue histogram) and myeloid (purple histogram) gates and viable splenocytes (orange histogram) were used for analysis. Relative expression validation info.



Ly-6G/Ly-6C Antibody (14-5931-82) in Flow
Staining of mouse bone marrow with Anti-Mouse Ly-6G (Gr-1) FITC and Anti-Human /Mouse CD45R (B220) PE (Product # 12-0452-82). Total viable cells were used for analysis.

[View more figures on thermofisher.com](http://thermofisher.com)

Flow Cytometry (169)

mSphere

Microbiota Reconstitution Does Not Cause Bone Loss in Germ-Free Mice.

"Published figure using Ly-6G/Ly-6C monoclonal antibody (Product # 14-5931-82) in Flow Cytometry"

Authors: Quach D,Collins F,Parameswaran N,McCabe L,Britton RA

Species
Not Applicable

Dilution
Not Cited

Year
2019

Cell discovery

Antiviral effects of ferric ammonium citrate.

"Published figure using Ly-6G/Ly-6C monoclonal antibody (Product # 14-5931-82) in Flow Cytometry"

Authors: Wang H,Li Z,Niu J,Xu Y,Ma L,Lu A,Wang X,Qian Z,Huang Z,Jin X,Leng Q,Wang J,Zhong J,Sun B,Meng G

Species
Not Applicable

Dilution
Not Cited

Year
2018

[View more Flow references on thermofisher.com](#)

Immunofluorescence (27)

Frontiers in cellular and infection microbiology

Gastric TFF1 Expression from Acute to Chronic *Helicobacter* Infection.

"Published figure using Ly-6G/Ly-6C monoclonal antibody (Product # 14-5931-82) in Immunofluorescence"

Authors: Esposito R,Morello S,Vllahu M,Eletto D,Porta A,Tosco A

Species
Mouse
Not Applicable

Dilution
1:100
Not Cited

Year
2018

Scientific reports

Healing of Preterm Ruptured Fetal Membranes.

"14-5931 was used in Immunofluorescence-paraffin to provide novel insights regarding unique healing mechanisms of amnion."

Authors: Mogami H,Hari Kishore A,Akgul Y,Word RA

Species
Mouse

Dilution
1:100

Year
2017

[View more IF references on thermofisher.com](#)

More applications with references on thermofisher.com

IHC (24)

IHC (P) (5)

IHC (F) (8)

MISC (4)

FN (18)

ICC (3)

ISH (1)

Neu (4)

IP (2)

IA (1)

For Research Use Only. Not for use in diagnostic procedures. Not for resale without express authorization. Products are warranted to operate or perform substantially in conformance with published Product specifications in effect at the time of sale, as set forth in the Production documentation, specifications and/or accompanying package inserts ("Documentation"). No claim of suitability for use in applications regulated by FDA is made. The warranty provided herein is valid only when used by properly trained individuals. Unless otherwise stated in the Documentation, this warranty is limited to one year from date of shipment when the Product is subjected to normal, proper and intended usage. This warranty does not extend to anyone other than the Buyer. Any model or sample furnished to Buyer is merely illustrative of the general type and quality of goods and does not represent that any Product will conform to such model or sample. NO OTHER WARRANTIES, EXPRESS OR IMPLIED, ARE GRANTED INCLUDING WITHOUT LIMITATION, IMPLIED WARRANTIES OF MERCHANTABILITY, FITNESS FOR ANY PARTICULAR PURPOSE, OR NON INFRINGEMENT. BUYER'S EXCLUSIVE REMEDY FOR NON-CONFORMING PRODUCTS DURING THE WARRANTY PERIOD IS LIMITED TO REPAIR, REPLACEMENT OF OR REFUND FOR THE NON-CONFORMING PRODUCT(S) AT SELLER'S SOLE OPTION. THERE IS NO OBLIGATION TO REPAIR, REPLACE OR REFUND FOR PRODUCTS AS THE RESULT OF (I) ACCIDENT, DISASTER OR EVENT OF FORCE MAJEURE, (II) MISUSE, FAULT OR NEGLIGENCE OF OR BY BUYER, (III) USE OF THE PRODUCTS IN A MANNER FOR WHICH THEY WERE NOT DESIGNED, OR (IV) IMPROPER STORAGE AND HANDLING OF THE PRODUCTS. Unless otherwise expressly stated on the Product or in the documentation accompanying the Product, the Product is intended for research only and is not to be used for any other purpose, including without limitation, unauthorized commercial uses, in vitro diagnostic uses, ex vivo or in vivo therapeutic uses, or any type of consumption by or application to human or animals.