

Cytochrome C Monoclonal Antibody (6H2), eBioscience™

Product Details

Size	100 µg
Species Reactivity	Human, Mouse, Rat
Host/Isotype	Mouse / IgG1, kappa
Class	Monoclonal
Type	Antibody
Clone	6H2
Conjugate	Unconjugated
Form	Liquid
Concentration	0.5 mg/mL
Purification	Affinity chromatography
Storage buffer	PBS, pH 7.2
Contains	0.09% sodium azide
Storage conditions	4° C
RRID	AB_468174

Applications	Tested Dilution	Publications
Immunohistochemistry (IHC)	-	1 Publication
Immunocytochemistry (ICC/IF)	-	1 Publication
Flow Cytometry (Flow)	Assay-Dependent	2 Publications
Immunoprecipitation (IP)	Assay-Dependent	-

Product Specific Information

Description: The 6H2 antibody reacts with the native form of mouse, human, and rat cytochrome c.

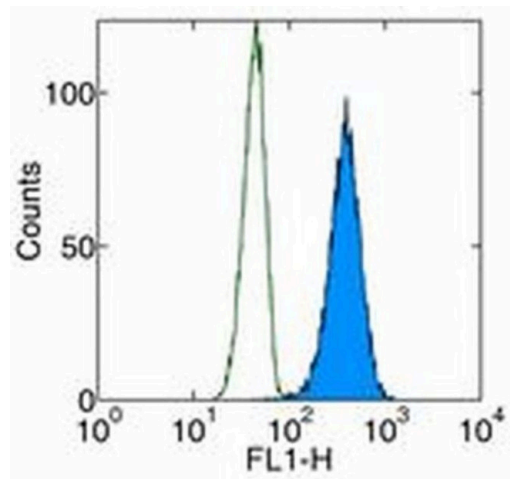
Applications Reported: The 6H2 antibody has been reported for use in intracellular flow cytometric analysis, and immunoprecipitation. (Fluorochrome conjugated 6H2 is recommended for use in intracellular flow cytometry.).

Applications Tested: The 6H2 antibody has been tested by intracellular flow cytometric analysis. It is recommended that the antibody be carefully titrated for optimal performance in the assay of interest.

Purity: Greater than 90%, as determined by SDS-PAGE.

Aggregation: Less than 10%, as determined by HPLC.

Filtration: 0.2 µm post-manufacturing filtered.



Cytochrome C Antibody (14-6601-82) in Flow
Intracellular staining of HeLa cells with Anti-Cytochrome C FITC. Appropriate isotype controls were used (open histogram). Total cells were used for analysis.

[View more figures on thermofisher.com](https://thermofisher.com)

Immunohistochemistry (1)

<p>PLoS neglected tropical diseases</p> <p>Caspase dependent programmed cell death in developing embryos: a potential target for therapeutic intervention against pathogenic nematodes.</p> <p>"Published figure using Cytochrome C monoclonal antibody (Product # 14-6601-82) in Immunofluorescence"</p> <p>Authors: Mohapatra AD,Kumar S,Satapathy AK,Ravindran B</p>	<p>Year</p> <p>2011</p>
--	-------------------------

Immunocytochemistry (1)

<p>PLoS neglected tropical diseases</p> <p>Caspase dependent programmed cell death in developing embryos: a potential target for therapeutic intervention against pathogenic nematodes.</p> <p>"Published figure using Cytochrome C monoclonal antibody (Product # 14-6601-82) in Immunofluorescence"</p> <p>Authors: Mohapatra AD,Kumar S,Satapathy AK,Ravindran B</p>	<p>Year</p> <p>2011</p>
--	-------------------------

Flow Cytometry (2)

<p>JCI insight</p> <p>Inhibition of antiapoptotic BCL-2 proteins with ABT-263 induces fibroblast apoptosis, reversing persistent pulmonary fibrosis.</p> <p>"Published figure using Cytochrome C monoclonal antibody (Product # 14-6601-82) in Flow Cytometry"</p> <p>Authors: Cooley JC,Javkhlan N,Wilson JA,Foster DG,Edelman BL,Ortiz LA,Schwartz DA,Riches DW,Redente EF</p>	<p>Year</p> <p>2023</p>
<p>Scientific reports</p> <p>Metabolite and thymocyte development defects in ADA-SCID mice receiving enzyme replacement therapy.</p> <p>"Published figure using Cytochrome C monoclonal antibody (Product # 14-6601-82) in Flow Cytometry"</p> <p>Authors: Moretti FA,Giardino G,Attenborough TCH,Gkazi AS,Margetts BK,Ia Marca G,Fairbanks L,Crompton T,Gaspar HB</p>	<p>Year</p> <p>2021</p>

For Research Use Only. Not for use in diagnostic procedures. Not for resale without express authorization. Products are warranted to operate or perform substantially in conformance with published Product specifications in effect at the time of sale, as set forth in the Production documentation, specifications and/or accompanying package inserts ("Documentation"). No claim of suitability for use in applications regulated by FDA is made. The warranty provided herein is valid only when used by properly trained individuals. Unless otherwise stated in the Documentation, this warranty is limited to one year from date of shipment when the Product is subjected to normal, proper and intended usage. This warranty does not extend to anyone other than the Buyer. Any model or sample furnished to Buyer is merely illustrative of the general type and quality of goods and does not represent that any Product will conform to such model or sample. NO OTHER WARRANTIES, EXPRESS OR IMPLIED, ARE GRANTED INCLUDING WITHOUT LIMITATION, IMPLIED WARRANTIES OF MERCHANTABILITY, FITNESS FOR ANY PARTICULAR PURPOSE, OR NON INFRINGEMENT. BUYER'S EXCLUSIVE REMEDY FOR NON-CONFORMING PRODUCTS DURING THE WARRANTY PERIOD IS LIMITED TO REPAIR, REPLACEMENT OF OR REFUND FOR THE NON-CONFORMING PRODUCT(S) AT SELLER'S SOLE OPTION. THERE IS NO OBLIGATION TO REPAIR, REPLACE OR REFUND FOR PRODUCTS AS THE RESULT OF (I) ACCIDENT, DISASTER OR EVENT OF FORCE MAJEURE, (II) MISUSE, FAULT OR NEGLIGENCE OF OR BY BUYER, (III) USE OF THE PRODUCTS IN A MANNER FOR WHICH THEY WERE NOT DESIGNED, OR (IV) IMPROPER STORAGE AND HANDLING OF THE PRODUCTS. Unless otherwise expressly stated on the Product or in the documentation accompanying the Product, the Product is intended for research only and is not to be used for any other purpose, including without limitation, unauthorized commercial uses, in vitro diagnostic uses, ex vivo or in vivo therapeutic uses, or any type of consumption by or application to human or animals.