

IL-10 Monoclonal Antibody (JES5-16E3), eBioscience™

Product Details	
Size	50 µg
Species Reactivity	Mouse
Published Species	Mouse, Human
Host/Isotope	Rat / IgG2b, kappa
Class	Monoclonal
Type	Antibody
Clone	JES5-16E3
Conjugate	Unconjugated
Form	Liquid
Concentration	0.5 mg/mL
Purification	Affinity chromatography
Storage buffer	PBS, pH 7.2
Contains	0.09% sodium azide
Storage Conditions	4° C
RRID	AB_468434

Applications	Tested Dilution	Publications
ELISA (ELISA)	1-4 µg/mL	6 Publications
Flow Cytometry (Flow)	-	29 Publications
Neutralization (Neu)	-	5 Publications

Product Specific Information

Description: The JES5-16E3 antibody reacts with mouse interleukin-10 (IL-10). Mouse IL-10 is an ~18 kDa factor also known as Cytokine Synthesis Inhibitory Factor (CSIF). In the mouse, Th2 cells, B1 cells, macrophages, and keratinocytes are the major cell subsets that produce IL-10. IL-10 inhibits synthesis of Th1 cytokines and proliferation of T cells, and acts as a costimulatory signal for mast cells, developing thymocytes and the Th2 response.

Applications Reported: The JES5-16E3 antibody has been reported for use in capture of mouse IL-10 by ELISA and ELISPOT, intracellular staining for flow cytometric analysis, IHC, and neutralization of IL-10 bioactivity.

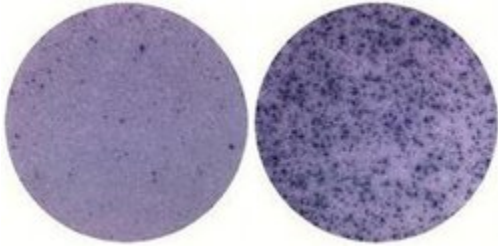
Applications Tested: The JES5-16E3 antibody has been tested as the capture antibody in a sandwich ELISA for analysis of mouse Interleukin-10 (IL-10) in combination with the biotin JES5-2A5 (13-7102) antibody for detection and recombinant mouse IL-10 (14-8101) as the standard. A suitable range of concentrations of this antibody for ELISA capture is 1-4 µg/mL. A standard curve consisting of doubling dilutions of the recombinant standard over the range of 4000 pg/mL - 30 pg/mL should be included in each ELISA plate.

Purity: Greater than 90%, as determined by SDS-PAGE.

Aggregation: Less than 10%, as determined by HPLC.

Filtration: 0.2 µm post-manufacturing filtered.

Product Images For IL-10 Monoclonal Antibody (JES5-16E3), eBioscience™



IL-10 Antibody (14-7101-81) in ELISA

Mouse splenocytes (500,000 cells per well) were activated with LPS (1 μ /mL) for 48 hrs in Mouse IL-10 ELISPOT assay. Control well is medium alone.

[View more figures on thermofisher.com](https://www.thermofisher.com)

ELISA (6)

Scientific reports

Analysis of the *Trichuris suis* excretory/secretory proteins as a function of life cycle stage and their immunomodulatory properties.

"14-7101 was used in an ELISA assay to analyse the *Trichuris suis* excretory/secretory proteins as a function of life cycle stage and their immunomodulatory properties."

Authors: Leroux LP, Nasr M, Valanparambil R, Tam M, Rosa BA, Siciliani E, Hill DE, Zarlenga DS, Jaramillo M, Weinstock JV, Geary TG, Stevenson MM, Urban JF, Mitreva M, Jardim A

Species
Mouse

Dilution
Not Cited

Year
2018

PloS one

IFNGR1 signaling is associated with adverse pregnancy outcomes during infection with malaria parasites.

Authors: Niikura M, Inoue SI, Mineo S, Asahi H, Kobayashi F

Species
Mouse

Dilution
Not Cited

Year
2017

[View more ELISA references on thermofisher.com](#)

Neutralization (5)

EMBO molecular medicine

TGF-1 secreted by Tregs in lymph nodes promotes breast cancer malignancy via up-regulation of IL-17RB.

"Published figure using IL-10 monoclonal antibody (Product # 14-7101-81) in Neutralization"

Authors: Huang SC, Wei PC, Hwang-Verslues WW, Kuo WH, Jeng YM, Hu CM, Shew JY, Huang CS, Chang KJ, Lee EY, Lee WH

Species
Not Applicable

Dilution
Not Cited

Year
2017

Journal of leukocyte biology

Immunosuppressive monocytes: possible homeostatic mechanism to restrain chronic intestinal inflammation.

"14-7101 was used in Blocking experiments to characterise the interplay between colitis-induced myeloid cells and the CD4 T cell response."

Authors: Kurmaeva E, Bhattacharya D, Goodman W, Omenetti S, Merendino A, Berney S, Pizarro T, Ostanin DV

Species
Mouse

Dilution
Not Cited

Year
2014

[View more Neu references on thermofisher.com](#)

More applications with references on thermofisher.com

Flow (29)

For Research Use Only. Not for use in diagnostic procedures. Not for resale without express authorization. Products are warranted to operate or perform substantially in conformance with published Product specifications in effect at the time of sale, as set forth in the Production documentation, specifications and/or accompanying package inserts ("Documentation"). No claim of suitability for use in applications regulated by FDA is made. The warranty provided herein is valid only when used by properly trained individuals. Unless otherwise stated in the Documentation, this warranty is limited to one year from date of shipment when the Product is subjected to normal, proper and intended usage. This warranty does not extend to anyone other than the Buyer. Any model or sample furnished to Buyer is merely illustrative of the general type and quality of goods and does not represent that any Product will conform to such model or sample. NO OTHER WARRANTIES, EXPRESS OR IMPLIED, ARE GRANTED INCLUDING WITHOUT LIMITATION, IMPLIED WARRANTIES OF MERCHANTABILITY, FITNESS FOR ANY PARTICULAR PURPOSE, OR NON INFRINGEMENT. BUYER'S EXCLUSIVE REMEDY FOR NON-CONFORMING PRODUCTS DURING THE WARRANTY PERIOD IS LIMITED TO REPAIR, REPLACEMENT OF OR REFUND FOR THE NON-CONFORMING PRODUCT(S) AT SELLER'S SOLE OPTION. THERE IS NO OBLIGATION TO REPAIR, REPLACE OR REFUND FOR PRODUCTS AS THE RESULT OF (I) ACCIDENT, DISASTER OR EVENT OF FORCE MAJEURE, (II) MISUSE, FAULT OR NEGLIGENCE OF OR BY BUYER, (III) USE OF THE PRODUCTS IN A MANNER FOR WHICH THEY WERE NOT DESIGNED, OR (IV) IMPROPER STORAGE AND HANDLING OF THE PRODUCTS. Unless otherwise expressly stated on the Product or in the documentation accompanying the Product, the Product is intended for research only and is not to be used for any other purpose, including without limitation, unauthorized commercial uses, in vitro diagnostic uses, ex vivo or in vivo therapeutic uses, or any type of consumption by or application to human or animals.