

Estrogen Receptor beta Monoclonal Antibody (MC10), eBioscience™

Product Details	
Size	100 µg
Species Reactivity	Human
Host/Isotype	Mouse / IgG2a, kappa
Class	Monoclonal
Type	Antibody
Clone	MC10
Conjugate	Unconjugated
Form	Liquid
Concentration	0.5 mg/mL
Purification	Affinity chromatography
Storage buffer	PBS, pH 7.2
Contains	0.09% sodium azide
Storage conditions	4° C
RRID	AB_2572943

Applications	Tested Dilution	Publications
Western Blot (WB)	Assay-Dependent	1 Publication
Immunohistochemistry (IHC)	-	1 Publication
Immunohistochemistry (Paraffin) (IHC (P))	30 µg/mL	-
Immunocytochemistry (ICC/IF)	Assay-Dependent	1 Publication
ELISA (ELISA)	Assay-Dependent	-
Immunoprecipitation (IP)	Assay-Dependent	-

Product Specific Information

Description: The MC10 monoclonal antibody recognizes all forms of human estrogen receptor (ER) beta. ER beta is a member of a superfamily of nuclear receptors, which are ligand-dependent transcription factors. ER beta like ER alpha, becomes activated by binding the hormone estrogen, causing a dissociation from chaperone proteins and subsequent dimerization with either ER beta or ER alpha. Unlike ER alpha, the result of ER beta signaling is thought to be anti-proliferative and proapoptotic. The MC10 clone recognizes full length ER beta as well as each of its splice variants.

Applications Reported: This MC10 antibody has been reported for use in immunoprecipitation, western blotting, immunohistochemical staining of formalin-fixed paraffin embedded tissue sections, microscopy, ELISA, and immunocytochemistry.

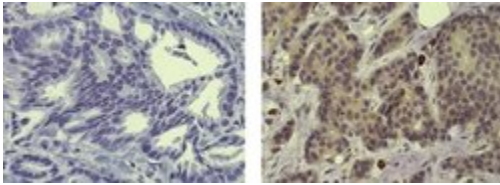
Applications Tested: This MC10 antibody has been tested by immunohistochemistry on formalin-fixed paraffin embedded human tissue using either low or high pH antigen retrieval and can be used at less than or equal to 30 µg/mL. It is recommended that the antibody be carefully titrated for optimal performance in the assay of interest.

Purity: Greater than 90%, as determined by SDS-PAGE.

Aggregation: Less than 10%, as determined by HPLC.

Filtration: 0.2 µm post-manufacturing filtered.

Product Images For Estrogen Receptor beta Monoclonal Antibody (MC10), eBioscience™



Estrogen Receptor beta Antibody (14-9336-82) in IHC (P)

Immunohistochemistry of formalin-fixed paraffin embedded human infiltrating ductal carcinoma tissue using 30 µg/mL Mouse IgG2a K Isotype Control (left) or 30 µg/mL Anti-Human Estrogen Receptor beta Purified (right) followed by Anti-Mouse Biotin, Streptavidin-HRP, and DAB visualization. Nuclei are counterstained with hematoxylin.

[View more figures on thermofisher.com](#)

3 References

Western Blot (1)

Journal of cellular biochemistry

Development, characterization, and applications of a novel estrogen receptor beta monoclonal antibody.

"Published figure using Estrogen Receptor beta monoclonal antibody (Product # 14-9336-82) in Immunocytochemistry"

Authors: Wu X, Subramaniam M, Negron V, Cicek M, Reynolds C, Lingle WL, Goetz MP, Ingle JN, Spelsberg TC, Hawse JR

Species

Not Applicable

Dilution

Not Cited

Year

2012

Immunohistochemistry (1)

Journal of cellular biochemistry

Development, characterization, and applications of a novel estrogen receptor beta monoclonal antibody.

"Published figure using Estrogen Receptor beta monoclonal antibody (Product # 14-9336-82) in Immunocytochemistry"

Authors: Wu X, Subramaniam M, Negron V, Cicek M, Reynolds C, Lingle WL, Goetz MP, Ingle JN, Spelsberg TC, Hawse JR

Species

Not Applicable

Dilution

Not Cited

Year

2012

Immunocytochemistry (1)

Journal of cellular biochemistry

Development, characterization, and applications of a novel estrogen receptor beta monoclonal antibody.

"Published figure using Estrogen Receptor beta monoclonal antibody (Product # 14-9336-82) in Immunocytochemistry"

Authors: Wu X, Subramaniam M, Negron V, Cicek M, Reynolds C, Lingle WL, Goetz MP, Ingle JN, Spelsberg TC, Hawse JR

Species

Not Applicable

Dilution

Not Cited

Year

2012

For Research Use Only. Not for use in diagnostic procedures. Not for resale without express authorization. Products are warranted to operate or perform substantially in conformance with published Product specifications in effect at the time of sale, as set forth in the Production documentation, specifications and/or accompanying package inserts ("Documentation"). No claim of suitability for use in applications regulated by FDA is made. The warranty provided herein is valid only when used by properly trained individuals. Unless otherwise stated in the Documentation, this warranty is limited to one year from date of shipment when the Product is subjected to normal, proper and intended usage. This warranty does not extend to anyone other than the Buyer. Any model or sample furnished to Buyer is merely illustrative of the general type and quality of goods and does not represent that any Product will conform to such model or sample. NO OTHER WARRANTIES, EXPRESS OR IMPLIED, ARE GRANTED INCLUDING WITHOUT LIMITATION, IMPLIED WARRANTIES OF MERCHANTABILITY, FITNESS FOR ANY PARTICULAR PURPOSE, OR NON INFRINGEMENT. BUYER'S EXCLUSIVE REMEDY FOR NON-CONFORMING PRODUCTS DURING THE WARRANTY PERIOD IS LIMITED TO REPAIR, REPLACEMENT OF OR REFUND FOR THE NON-CONFORMING PRODUCT(S) AT SELLER'S SOLE OPTION. THERE IS NO OBLIGATION TO REPAIR, REPLACE OR REFUND FOR PRODUCTS AS THE RESULT OF (I) ACCIDENT, DISASTER OR EVENT OF FORCE MAJEURE, (II) MISUSE, FAULT OR NEGLIGENCE OF OR BY BUYER, (III) USE OF THE PRODUCTS IN A MANNER FOR WHICH THEY WERE NOT DESIGNED, OR (IV) IMPROPER STORAGE AND HANDLING OF THE PRODUCTS. Unless otherwise expressly stated on the Product or in the documentation accompanying the Product, the Product is intended for research only and is not to be used for any other purpose, including without limitation, unauthorized commercial uses, in vitro diagnostic uses, ex vivo or in vivo therapeutic uses, or any type of consumption by or application to human or animals.