

ALDH1L1 Monoclonal Antibody (7G8), eBioscience™

Product Details	
Size	100 µg
Species Reactivity	Human
Published Species	Human
Host/Isotype	Mouse / IgG2b, kappa
Class	Monoclonal
Type	Antibody
Clone	7G8
Conjugate	Unconjugated
Form	Liquid
Concentration	0.5 mg/mL
Purification	Affinity chromatography
Storage buffer	PBS, pH 7.2
Contains	0.09% sodium azide
Storage conditions	4° C
RRID	AB_2572952

Applications	Tested Dilution	Publications
Western Blot (WB)	Assay-Dependent	-
Immunohistochemistry (IHC)	-	1 Publication
Immunohistochemistry (Paraffin) (IHC (P))	Assay-dependent	1 Publication
Immunocytochemistry (ICC/IF)	Assay-Dependent	-
Flow Cytometry (Flow)	Assay-Dependent	-

Product Specific Information

Description: This 7G8 monoclonal antibody reacts with human 10-formyltetrahydrofolate dehydrogenase (ALDH1L1) a protein involved in folate metabolism. The cytosolic enzyme, with homology to the aldehyde dehydrogenase (ALDH) family, is involved in the conversion of 10-formyltetrahydrofolate, NADP and water to tetrahydrofolate, NADPH and carbon dioxide. Folate metabolism is essential for cell growth and proliferation and decreased levels of folate have been implicated in neural tube defects in addition to increased cancer risk. This isoform (1L1) is expressed in glial cells has been identified as a highly specific marker for astrocytes labeling both the cell body and processes.

Applications Reported: This 7G8 antibody has been reported for use in flow cytometric analysis, western blotting, immunohistochemical staining, and immunocytochemistry.

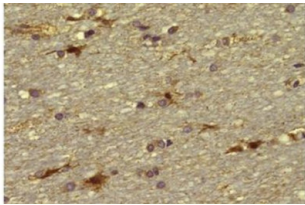
Applications Tested: This 7G8 antibody has been tested by immunohistochemistry on human FFPE tissue using both high and low pH antigen retrieval. Both antigen retrieval methods resulted in staining although low pH antigen retrieval is optimal. The antibody can be used at less than or equal to 1 µg/mL. It is recommended that antibody be carefully titrated for optimal performance in the assay of interest.

Purity: Greater than 90%, as determined by SDS-PAGE.

Aggregation: Less than 10%, as determined by HPLC.

Filtration: 0.2 µm post-manufacturing filtered.

Product Images For ALDH1L1 Monoclonal Antibody (7G8), eBioscience™



ALDH1L1 Antibody (14-9595-82) in IHC (P)
Immunohistochemistry of formalin-fixed paraffin embedded human cerebellar white matter stained with 1 µg/mL Anti-Human 10-formyltetrahydrofolate dehydrogenase (ALDH1L1) Purified followed Anti-Mouse IgG Biotin, avidin HRP, and DAB visualization. Nuclei are counterstained with hematoxylin.

2 References

Immunohistochemistry (1)

Brain pathology (Zurich, Switzerland)	Year 2018
Severe white matter astrocytopathy in CADASIL.	Species Human
"14-9595-82 was used in Immunohistochemistry-immunofluorescence to report that there is significant astrocyte pathology in CADASIL, with the temporal lobe being most affected, and provide clear evidence that astrocyte death in CADASIL involves the autophagy pathway."	Dilution 1:100
Authors: Hase Y,Chen A,Bates LL,Craggs LJJ,Yamamoto Y,Gemmell E,Oakley AE,Korolchuk VI,Kalaria RN	

Immunohistochemistry (Paraffin) (1)

Brain : a journal of neurology	Year 2016
Frontal white matter hyperintensities, clasmatodendrosis and gliovascular abnormalities in ageing and post-stroke dementia.	Species Human
Authors: Chen A,Akinyemi RO,Hase Y,Firbank MJ,Ndung'u MN,Foster V,Craggs LJ,Washida K,Okamoto Y,Thomas AJ, Polvikoski TM,Allan LM,Oakley AE,O'Brien JT,Horsburgh K,Ihara M,Kalaria RN	Dilution 1:100

For Research Use Only. Not for use in diagnostic procedures. Not for resale without express authorization. Products are warranted to operate or perform substantially in conformance with published Product specifications in effect at the time of sale, as set forth in the Production documentation, specifications and/or accompanying package inserts ("Documentation"). No claim of suitability for use in applications regulated by FDA is made. The warranty provided herein is valid only when used by properly trained individuals. Unless otherwise stated in the Documentation, this warranty is limited to one year from date of shipment when the Product is subjected to normal, proper and intended usage. This warranty does not extend to anyone other than the Buyer. Any model or sample furnished to Buyer is merely illustrative of the general type and quality of goods and does not represent that any Product will conform to such model or sample. NO OTHER WARRANTIES, EXPRESS OR IMPLIED, ARE GRANTED INCLUDING WITHOUT LIMITATION, IMPLIED WARRANTIES OF MERCHANTABILITY, FITNESS FOR ANY PARTICULAR PURPOSE, OR NON INFRINGEMENT. BUYER'S EXCLUSIVE REMEDY FOR NON-CONFORMING PRODUCTS DURING THE WARRANTY PERIOD IS LIMITED TO REPAIR, REPLACEMENT OF OR REFUND FOR THE NON-CONFORMING PRODUCT(S) AT SELLER'S SOLE OPTION. THERE IS NO OBLIGATION TO REPAIR, REPLACE OR REFUND FOR PRODUCTS AS THE RESULT OF (i) ACCIDENT, DISASTER OR EVENT OF FORCE MAJEURE, (ii) MISUSE, FAULT OR NEGLIGENCE OF OR BY BUYER, (iii) USE OF THE PRODUCTS IN A MANNER FOR WHICH THEY WERE NOT DESIGNED, OR (iv) IMPROPER STORAGE AND HANDLING OF THE PRODUCTS. Unless otherwise expressly stated on the Product or in the documentation accompanying the Product, the Product is intended for research only and is not to be used for any other purpose, including without limitation, unauthorized commercial uses, in vitro diagnostic uses, ex vivo or in vivo therapeutic uses, or any type of consumption by or application to human or animals.