

HES1 Monoclonal Antibody (4H1HES1), eBioscience™

Product Details	
Size	100 µg
Species Reactivity	Human
Host/Isotype	Mouse / IgG1, kappa
Class	Monoclonal
Type	Antibody
Clone	4H1HES1
Conjugate	Unconjugated
Form	Liquid
Concentration	0.5 mg/mL
Purification	Affinity chromatography
Storage buffer	PBS, pH 7.2
Contains	0.09% sodium azide
Storage conditions	4° C
RRID	AB_10853019

Applications	Tested Dilution	Publications
Immunohistochemistry (Paraffin) (IHC (P))	20 µg/mL	-
Immunohistochemistry (Frozen) (IHC (F))	20 µg/mL	-

Product Specific Information

Description: This 4H1HES monoclonal antibody reacts with human Hes1, a 30-kDa basic-helix-loop-helix transcriptional repressor. Hes1 is expressed in thymocytes, as well as neural, retinal, liver, and pancreatic tissues. Expression of Hes1 is controlled by Notch signaling, and thus plays an important role in T cell development. This regulation by Notch is also critical for neural stem cell differentiation and neurogenesis. Reports have demonstrated that Hes1 antagonizes transcription of MASH1, a basic-helix-loop-helix factor involved in neuronal determination. Finally, Hes1 has been associated with Notch-induced T cell acute lymphoblastic lymphoma and other cancers.

Applications Reported: This 4H1HES antibody has been reported for use in immunohistochemical staining of frozen (IHC-F) and formalin-fixed paraffin embedded (FFPE) tissue sections (IHC-P).

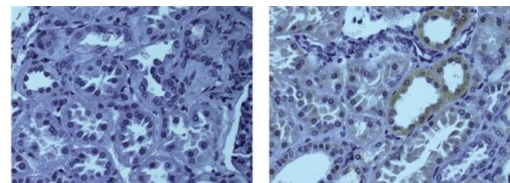
Applications Tested: This 4H1HES antibody has been tested by immunohistochemistry on FFPE human kidney cortex at less than or equal to 20 µg/mL both without antigen retrieval or with high pH antigen retrieval. It is recommended that this antibody be carefully titrated for optimal performance in the assay of interest.

Purity: Greater than 90%, as determined by SDS-PAGE.

Aggregation: Less than 10%, as determined by HPLC.

Filtration: 0.2 µm post-manufacturing filtered.

Product Images For HES1 Monoclonal Antibody (4H1HES1), eBioscience™



HES1 Antibody (14-9799-82) in IHC (P)

Immunohistochemistry on FFPE human kidney cortex using 20 µg/mL of Mouse IgG1 K Isotype Control (left) or 20 µg/mL Anti-Human Hes1 Purified (right).Nuclei are counterstained with hematoxylin.

For Research Use Only. Not for use in diagnostic procedures. Not for resale without express authorization. Products are warranted to operate or perform substantially in conformance with published Product specifications in effect at the time of sale, as set forth in the Production documentation, specifications and/or accompanying package inserts ("Documentation"). No claim of suitability for use in applications regulated by FDA is made. The warranty provided herein is valid only when used by properly trained individuals. Unless otherwise stated in the Documentation, this warranty is limited to one year from date of shipment when the Product is subjected to normal, proper and intended usage. This warranty does not extend to anyone other than the Buyer. Any model or sample furnished to Buyer is merely illustrative of the general type and quality of goods and does not represent that any Product will conform to such model or sample. NO OTHER WARRANTIES, EXPRESS OR IMPLIED, ARE GRANTED INCLUDING WITHOUT LIMITATION, IMPLIED WARRANTIES OF MERCHANTABILITY, FITNESS FOR ANY PARTICULAR PURPOSE, OR NON INFRINGEMENT. BUYER'S EXCLUSIVE REMEDY FOR NON-CONFORMING PRODUCTS DURING THE WARRANTY PERIOD IS LIMITED TO REPAIR, REPLACEMENT OF OR REFUND FOR THE NON-CONFORMING PRODUCT(S) AT SELLER'S SOLE OPTION. THERE IS NO OBLIGATION TO REPAIR, REPLACE OR REFUND FOR PRODUCTS AS THE RESULT OF (I) ACCIDENT, DISASTER OR EVENT OF FORCE MAJEURE, (II) MISUSE, FAULT OR NEGLIGENCE OF OR BY BUYER, (III) USE OF THE PRODUCTS IN A MANNER FOR WHICH THEY WERE NOT DESIGNED, OR (IV) IMPROPER STORAGE AND HANDLING OF THE PRODUCTS. Unless otherwise expressly stated on the Product or in the documentation accompanying the Product, the Product is intended for research only and is not to be used for any other purpose, including without limitation, unauthorized commercial uses, in vitro diagnostic uses, ex vivo or in vivo therapeutic uses, or any type of consumption by or application to human or animals.