

HLA-ABC Monoclonal Antibody (W6/32), eBioscience™

Product Details	
Size	100 µg
Species Reactivity	Human
Published Species	Cynomolgus monkey, Fruit fly, Human, Mouse
Host/Isotype	Mouse / IgG2a, kappa
Class	Monoclonal
Type	Antibody
Clone	W6/32
Conjugate	Unconjugated
Form	Liquid
Concentration	0.5 mg/mL
Purification	Affinity chromatography
Storage buffer	PBS, pH 7.2
Contains	0.09% sodium azide
Storage conditions	4° C
RRID	AB_468661

Applications	Tested Dilution	Publications
Western Blot (WB)	-	2 Publications
Immunohistochemistry (Frozen) (IHC (F))	Assay-Dependent	2 Publications
Immunocytochemistry (ICC/IF)	-	2 Publications
Flow Cytometry (Flow)	1 µg/test	15 Publications
ELISA (ELISA)	-	2 Publications
Immunoprecipitation (IP)	Assay-Dependent	-
Neutralization (Neu)	-	1 Publication
Functional Assay (FN)	-	4 Publications
Inhibition Assays (IA)	-	2 Publications
In vitro Assay (IV)	-	2 Publications

Product Specific Information

Description: The W6/32 monoclonal antibody reacts with the human major histocompatibility complex (MHC) class I, HLA-A, B, C. MHC class I antigens associated with beta 2-microglobulin are expressed by all human nucleated cells and are central in cell-mediated immune response and tumor surveillance. W6/32 mAb recognizes a non-polymorphic epitope shared among products of the HLA-A, B, and C loci and immunoprecipitates both 43 kDa and 11-12 kDa chains. Crossreactivity is also seen in baboon, rhesus and cynomolgus monkey.

Applications Reported: This W6/32 antibody has been reported for use in flow cytometric analysis, immunoprecipitation, and immunohistology staining of frozen tissue sections.

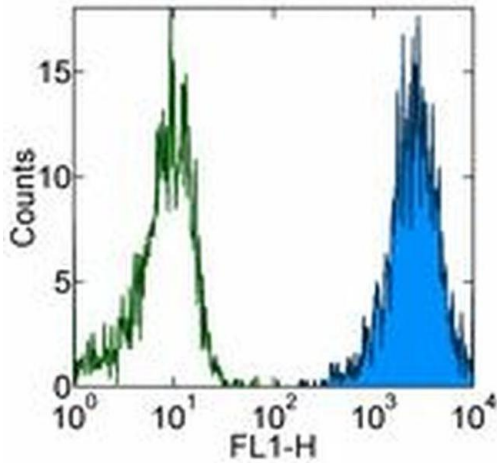
Applications Tested: The W6/32 antibody has been tested by flow cytometric analysis of normal human peripheral blood cells. This can be used at less than or equal to 1 µg per test. A test is defined as the amount (µg) of antibody that will stain a cell sample in a final volume of 100 µL. Cell number should be determined empirically but can range from 10⁵ to 10⁸ cells/test. It is recommended that the antibody be carefully titrated for optimal performance in the assay of interest.

Purity: Greater than 90%, as determined by SDS-PAGE.

Aggregation: Less than 10%, as determined by HPLC.

Filtration: 0.2 µm post-manufacturing filtered.

Product Images For HLA-ABC Monoclonal Antibody (W6/32), eBioscience™



HLA-ABC Antibody (14-9983-82) in Flow

Staining of normal human peripheral blood cells with 0.5 µg of Mouse IgG2a kappa Isotype Control Purified (Product # 14-4724-82) (open histogram) or 0.5 µg of Anti-Human HLA-ABC Purified (filled histogram) followed by Anti-Mouse IgG FITC (Product # 11-4011-85). Cells in the lymphocyte gate were used for analysis.

[View more figures on thermofisher.com](http://thermofisher.com)

Western Blot (2)

Molecular cancer therapeutics

Monoclonal Antibody Targeting Sialyl-di-Lewis^a-Containing Internalizing and Noninternalizing Glycoproteins with Cancer Immunotherapy Development Potential.

"14-9983-82 was used in Western Blot to describe the characterization of the mAb, FG129, which targets tumor-associated sialylated glycan, and demonstrate its potential for multimodal cancer therapy."

Authors: Tivadar ST, McIntosh RS, Chua JX, Moss R, Parsons T, Zaitoun AM, Madhusudan S, Durrant LG, Vankemmelbeke M

Species
Human

Dilution
Not Cited

Year
2020

Journal of leukocyte biology

Critical role of Lck in L-selectin signaling induced by sulfatides engagement.

"14-9983 was used in Western Blotting to suggest that Lck plays a critical role in L-selectin signaling upon sulfatides stimulation."

Authors: Xu T, Chen L, Shang X, Cui L, Luo J, Chen C, Ba X, Zeng X

Species
Human

Dilution
Not Cited

Year
2008

Immunohistochemistry (Frozen) (2)

Human immunology

High level of aneuploidy of chromosome 6 by FISH analysis of head and neck squamous cell carcinoma: limited applicability of LOH analysis to define HLA loss.

Authors: Koene GJ, Arts-Hilkes YH, van Dijk AJ, van der Ven KJ, Slootweg PJ, de Weger RA, Tilanus MG

Species
Not Applicable

Dilution
Not Cited

Year
2004

American journal of obstetrics and gynecology

A study of human leukocyte antigen G expression in hydatidiform moles.

Authors: Goldman-Wohl D, Ariel I, Greenfield C, Hochner-Celnikier D, Lavy Y, Yagel S

Species
Not Applicable

Dilution
Not Cited

Year
2001

More applications with references on thermofisher.com

ICC/IF (2)

Flow (15)

ELISA (2)

Neu (1)

FN (4)

IA (2)

IV (2)

For Research Use Only. Not for use in diagnostic procedures. Not for resale without express authorization. Products are warranted to operate or perform substantially in conformance with published Product specifications in effect at the time of sale, as set forth in the Production documentation, specifications and/or accompanying package inserts ("Documentation"). No claim of suitability for use in applications regulated by FDA is made. The warranty provided herein is valid only when used by properly trained individuals. Unless otherwise stated in the Documentation, this warranty is limited to one year from date of shipment when the Product is subjected to normal, proper and intended usage. This warranty does not extend to anyone other than the Buyer. Any model or sample furnished to Buyer is merely illustrative of the general type and quality of goods and does not represent that any Product will conform to such model or sample. NO OTHER WARRANTIES, EXPRESS OR IMPLIED, ARE GRANTED INCLUDING WITHOUT LIMITATION, IMPLIED WARRANTIES OF MERCHANTABILITY, FITNESS FOR ANY PARTICULAR PURPOSE, OR NON INFRINGEMENT. BUYER'S EXCLUSIVE REMEDY FOR NON-CONFORMING PRODUCTS DURING THE WARRANTY PERIOD IS LIMITED TO REPAIR, REPLACEMENT OF OR REFUND FOR THE NON-CONFORMING PRODUCT(S) AT SELLER'S SOLE OPTION. THERE IS NO OBLIGATION TO REPAIR, REPLACE OR REFUND FOR PRODUCTS AS THE RESULT OF (I) ACCIDENT, DISASTER OR EVENT OF FORCE MAJEURE, (II) MISUSE, FAULT OR NEGLIGENCE OF OR BY BUYER, (III) USE OF THE PRODUCTS IN A MANNER FOR WHICH THEY WERE NOT DESIGNED, OR (IV) IMPROPER STORAGE AND HANDLING OF THE PRODUCTS. Unless otherwise expressly stated on the Product or in the documentation accompanying the Product, the Product is intended for research only and is not to be used for any other purpose, including without limitation, unauthorized commercial uses, in vitro diagnostic uses, ex vivo or in vivo therapeutic uses, or any type of consumption by or application to human or animals.