

CD38 Monoclonal Antibody (HIT2), PE-Cyanine5, eBioscience™

Product Details	
Size	100 Tests
Species Reactivity	Human
Published Species	Human
Host/Isotype	Mouse / IgG1, kappa
Recommended Isotype Control	Mouse IgG1 kappa Isotype Control (P3.6.2.8.1), PE-Cyanine5, eBioscience™
Class	Monoclonal
Type	Antibody
Clone	HIT2
Conjugate	PE-Cyanine5
Excitation/Emission Max	568/666 nm
Form	Liquid
Concentration	5 µL/Test
Purification	Affinity chromatography
Storage buffer	PBS, pH 7.2, with 0.2% BSA
Contains	0.09% sodium azide
Storage conditions	4° C, store in dark, DO NOT FREEZE!
RRID	AB_1834381

Applications	Tested Dilution	Publications
Flow Cytometry (Flow)	5 µL (0.125 µg)/test	14 Publications

Product Specific Information

Description: The HIT2 monoclonal antibody reacts with the human CD38 molecule, an approximately 45 kDa type II transmembrane protein. CD38 is expressed by thymocytes, peripheral B cells including plasma cells, activated T cells, and monocytes. CD38 is a counter-receptor for CD31 and has both cyclase and hydrolase enzymatic activity.

Applications Reported: The HIT2 antibody has been reported for use in flow cytometric analysis.

Applications Tested: This HIT2 antibody has been pre-titrated and tested by flow cytometric analysis of normal human peripheral blood cells. This can be used at 5 µL (0.125 µg) per test. A test is defined as the amount (µg) of antibody that will stain a cell sample in a final volume of 100 µL. Cell number should be determined empirically but can range from 10⁵ to 10⁸ cells/test.

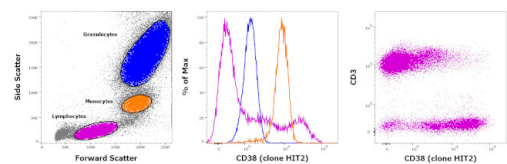
Light sensitivity: This tandem dye is sensitive photo-induced oxidation. Please protect this vial and stained samples from light.

Fixation: Samples can be stored in IC Fixation Buffer (cat. 00-8222) (100 µL cell sample + 100 µL IC Fixation Buffer) or 1-step Fix/Lyse Solution (cat. 00-5333) for up to 3 days in the dark at 4°C with minimal impact on brightness and FRET efficiency /compensation. Some generalizations regarding fluorophore performance after fixation can be made, but clone specific performance should be determined empirically.

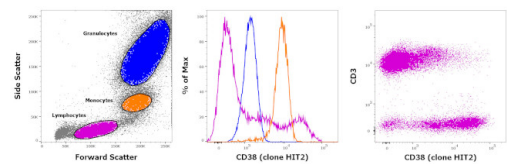
Excitation: 488-561 nm; **Emission:** 667 nm; **Laser:** Blue Laser, Green Laser, Yellow-Green Laser.

Filtration: 0.2 µm post-manufacturing filtered.

Product Images For CD38 Monoclonal Antibody (HIT2), PE-Cyanine5, eBioscience™



CD38 Antibody (15-0389-42)
Staining of human peripheral blood mononuclear cells with CD45 Pacific Blue, CD3 FITC and CD38 PE-Cyanine5. As expected based on known relative expression patterns, CD38 clone HIT2 stains a subset of lymphocytes (pink), monocytes (orange) and granulocytes (blue). {RE}



CD38 Antibody (15-0389-42) in Flow
Staining of human peripheral blood mononuclear cells with CD45 Pacific Blue, CD3 FITC and CD38 PE-Cyanine5. As expected based on known relative expression patterns, CD38 clone HIT2 stains a subset of lymphocytes (pink), monocytes (orange) and granulocytes (blue).

View more figures on thermofisher.com

14 References

Flow Cytometry (14)

<p>Frontiers in immunology</p> <p>Immunometabolic interference between cancer and COVID-19.</p> <p>"Published figure using CD38 monoclonal antibody (Product # 15-0389-42) in Flow Cytometry"</p> <p>Authors: Consonni FM,Durante B,Manfredi M,Bleve A,Pandolfo C,Garlatti V,Vanella VV,Marengo E,Barberis E,Bottazzi B,Bombace S,My I,Condorelli G,Torri V,Sica A</p>	<p>Year</p> <p>2023</p>
<p>Aging cell</p> <p>B cell-intrinsic changes with age do not impact antibody-secreting cell formation but delay B cell participation in the germinal centre reaction.</p> <p>"Published figure using CD38 monoclonal antibody (Product # 15-0389-42) in Flow Cytometry"</p> <p>Authors: Lee JL,Fra-Bido SC,Burton AR,Innocent S,Hill DL,Linterman MA</p>	<p>Year</p> <p>2022</p>

View more Flow references on thermofisher.com

More applications with references on thermofisher.com

For Research Use Only. Not for use in diagnostic procedures. Not for resale without express authorization. Products are warranted to operate or perform substantially in conformance with published Product specifications in effect at the time of sale, as set forth in the Production documentation, specifications and/or accompanying package inserts ("Documentation"). No claim of suitability for use in applications regulated by FDA is made. The warranty provided herein is valid only when used by properly trained individuals. Unless otherwise stated in the Documentation, this warranty is limited to one year from date of shipment when the Product is subjected to normal, proper and intended usage. This warranty does not extend to anyone other than the Buyer. Any model or sample furnished to Buyer is merely illustrative of the general type and quality of goods and does not represent that any Product will conform to such model or sample. NO OTHER WARRANTIES, EXPRESS OR IMPLIED, ARE GRANTED INCLUDING WITHOUT LIMITATION, IMPLIED WARRANTIES OF MERCHANTABILITY, FITNESS FOR ANY PARTICULAR PURPOSE, OR NON INFRINGEMENT. BUYER'S EXCLUSIVE REMEDY FOR NON-CONFORMING PRODUCTS DURING THE WARRANTY PERIOD IS LIMITED TO REPAIR, REPLACEMENT OF OR REFUND FOR THE NON-CONFORMING PRODUCT(S) AT SELLER'S SOLE OPTION. THERE IS NO OBLIGATION TO REPAIR, REPLACE OR REFUND FOR PRODUCTS AS THE RESULT OF (I) ACCIDENT, DISASTER OR EVENT OF FORCE MAJEURE, (II) MISUSE, FAULT OR NEGLIGENCE OF OR BY BUYER, (III) USE OF THE PRODUCTS IN A MANNER FOR WHICH THEY WERE NOT DESIGNED, OR (IV) IMPROPER STORAGE AND HANDLING OF THE PRODUCTS. Unless otherwise expressly stated on the Product or in the documentation accompanying the Product, the Product is intended for research only and is not to be used for any other purpose, including without limitation, unauthorized commercial uses, in vitro diagnostic uses, ex vivo or in vivo therapeutic uses, or any type of consumption by or application to human or animals.