

HLA-ABC Monoclonal Antibody (W6/32), PE-Cyanine5, eBioscience™

| Product Details | |
|-----------------------------|--|
| Size | 100 Tests |
| Species | Human |
| Published Species | Human |
| Expression System | Mouse / IgG2a, kappa |
| Recommended Isotype Control | Mouse IgG2a kappa Isotype Control (eBM2a), PE-Cyanine5, eBioscience™ |
| Class | Monoclonal |
| Type | Antibody |
| Clone | W6/32 |
| Conjugate | PE-Cyanine5 |
| Form | Liquid |
| Concentration | 5 µL/Test |
| Purification | Affinity chromatography |
| Storage buffer | PBS, pH 7.2, with 0.1% gelatin, 0.2% BSA |
| Contains | 0.09% sodium azide |
| Storage Conditions | 4° C, store in dark, DO NOT FREEZE! |
| RRID | AB_10596814 |

| Applications | Tested Dilution | Publications |
|---|---------------------|----------------|
| Flow Cytometry (Flow) | 5 µL (0.25 µg)/test | 7 Publications |
| Immunohistochemistry (Frozen) (IHC (F)) | - | 2 Publications |

Product Specific Information

Description: The W6/32 monoclonal antibody reacts with the human major histocompatibility complex (MHC) class I, HLA-A, B, C. MHC class I antigens associated with beta 2-microglobulin are expressed by all human nucleated cells and are central in cell-mediated immune response and tumor surveillance. W6/32 mAb recognizes a non-polymorphic epitope shared among products of the HLA-A, B, and C loci and immunoprecipitates both 43 kDa and 11-12 kDa chains. Crossreactivity is also seen in baboon, rhesus and cynomolgus monkey.

Applications Reported: The W6/32 antibody has been reported for use in flow cytometric analysis.

Applications Tested: This W6/32 antibody has been pre-titrated and tested by flow cytometric analysis of normal human peripheral blood cells. This can be used at 5 µL (0.25 µg) per test. A test is defined as the amount (µg) of antibody that will stain a cell sample in a final volume of 100 µL. Cell number should be determined empirically but can range from 10⁵ to 10⁸ cells/test.

Light sensitivity: This tandem dye is sensitive photo-induced oxidation. Please protect this vial and stained samples from light.

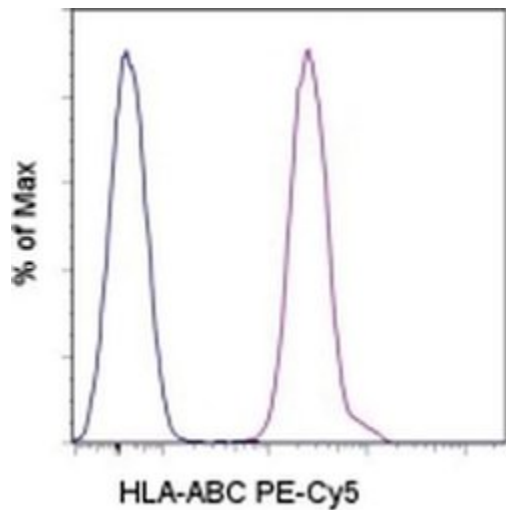
Fixation: Samples can be stored in IC Fixation Buffer (cat. 00-8222) (100 µL cell sample + 100 µL IC Fixation Buffer) or 1-step Fix /Lyse Solution (cat. 00-5333) for up to 3 days in the dark at 4°C with minimal impact on brightness and FRET efficiency

/compensation. Some generalizations regarding fluorophore performance after fixation can be made, but clone specific performance should be determined empirically.

Excitation: 488-561 nm; Emission: 667 nm; Laser: Blue Laser, Green Laser, Yellow-Green Laser.

Filtration: 0.2 µm post-manufacturing filtered.

Product Images For HLA-ABC Monoclonal Antibody (W6/32), PE-Cyanine5, eBioscience™



HLA-ABC Antibody (15-9983-42) in Flow

Staining of normal human peripheral blood cells with Mouse IgG2a K Isotype Control PE-Cyanine5 (Product # 15-4724-81) (blue histogram) or Anti-Human HLA-ABC PE-Cyanine5 (purple histogram). Cells in the lymphocyte gate were used for analysis.

[View more figures on thermofisher.com](https://www.thermofisher.com)

Flow Cytometry (7)

PloS one

Hypoxia and hypoxia-inducible factor (HIF) downregulate antigen-presenting MHC class I molecules limiting tumor cell recognition by T cells.

"Published figure using HLA-ABC monoclonal antibody (Product # 15-9983-42) in Flow Cytometry"

Authors: Sethumadhavan S, Silva M, Philbrook P, Nguyen T, Hatfield SM, Ohta A, Sitkovsky MV

Species
Human

Dilution
Not Cited

Year
2017

Stem cell research and therapy

Identification and validation of multiple cell surface markers of clinical-grade adipose-derived mesenchymal stromal cells as novel release criteria for good manufacturing practice-compliant production.

"Published figure using HLA-ABC monoclonal antibody (Product # 15-9983-42) in Flow Cytometry"

Authors: Camilleri ET, Gustafson MP, Dudakovic A, Riestler SM, Garces CG, Paradise CR, Takai H, Karperien M, Cool S, Sampen HJ, Larson AN, Qu W, Smith J, Dietz AB, van Wijnen AJ

Species
Not Applicable

Dilution
Not Cited

Year
2016

[View more Flow references on thermofisher.com](#)

Immunohistochemistry (Frozen) (2)

Human immunology

High level of aneuploidy of chromosome 6 by FISH analysis of head and neck squamous cell carcinoma: limited applicability of LOH analysis to define HLA loss.

Authors: Koene GJ, Arts-Hilkes YH, van Dijk AJ, van der Ven KJ, Slootweg PJ, de Weger RA, Tilanus MG

Species
Not Applicable

Dilution
Not Cited

Year
2004

American journal of obstetrics and gynecology

A study of human leukocyte antigen G expression in hydatidiform moles.

Authors: Goldman-Wohl D, Ariel I, Greenfield C, Hochner-Celnikier D, Lavy Y, Yagel S

Species
Not Applicable

Dilution
Not Cited

Year
2001

More applications with references on thermofisher.com

For Research Use Only. Not for use in diagnostic procedures. Not for resale without express authorization. Products are warranted to operate or perform substantially in conformance with published Product specifications in effect at the time of sale, as set forth in the Production documentation, specifications and/or accompanying package inserts ("Documentation"). No claim of suitability for use in applications regulated by FDA is made. The warranty provided herein is valid only when used by properly trained individuals. Unless otherwise stated in the Documentation, this warranty is limited to one year from date of shipment when the Product is subjected to normal, proper and intended usage. This warranty does not extend to anyone other than the Buyer. Any model or sample furnished to Buyer is merely illustrative of the general type and quality of goods and does not represent that any Product will conform to such model or sample. NO OTHER WARRANTIES, EXPRESS OR IMPLIED, ARE GRANTED INCLUDING WITHOUT LIMITATION, IMPLIED WARRANTIES OF MERCHANTABILITY, FITNESS FOR ANY PARTICULAR PURPOSE, OR NON INFRINGEMENT. BUYER'S EXCLUSIVE REMEDY FOR NON-CONFORMING PRODUCTS DURING THE WARRANTY PERIOD IS LIMITED TO REPAIR, REPLACEMENT OF OR REFUND FOR THE NON-CONFORMING PRODUCT(S) AT SELLER'S SOLE OPTION. THERE IS NO OBLIGATION TO REPAIR, REPLACE OR REFUND FOR PRODUCTS AS THE RESULT OF (I) ACCIDENT, DISASTER OR EVENT OF FORCE MAJEURE, (II) MISUSE, FAULT OR NEGLIGENCE OF OR BY BUYER, (III) USE OF THE PRODUCTS IN A MANNER FOR WHICH THEY WERE NOT DESIGNED, OR (IV) IMPROPER STORAGE AND HANDLING OF THE PRODUCTS. Unless otherwise expressly stated on the Product or in the documentation accompanying the Product, the Product is intended for research only and is not to be used for any other purpose, including without limitation, unauthorized commercial uses, in vitro diagnostic uses, ex vivo or in vivo therapeutic uses, or any type of consumption by or application to human or animals.