

CD1d Monoclonal Antibody (1B1), Functional Grade, eBioscience™

Product Details	
Size	100 µg
Species Reactivity	Mouse
Published Species	Mouse
Host/Isotype	Rat / IgG2b, kappa
Recommended Isotype Control	Rat IgG2b kappa Isotype Control (eB149/10H5), Functional Grade, eBioscience™
Class	Monoclonal
Type	Antibody
Clone	1B1
Conjugate	Functional Grade
Form	Liquid
Concentration	1 mg/mL
Purification	Affinity chromatography
Storage buffer	PBS, pH 7.2
Contains	no preservative
Storage conditions	4° C
RRID	AB_468838

Applications	Tested Dilution	Publications
Western Blot (WB)	-	1 Publication
Flow Cytometry (Flow)	1 µg/test	5 Publications
Neutralization (Neu)	-	2 Publications
Functional Assay (FN)	Assay-Dependent	-

Product Specific Information

Description: The 1B1 monoclonal antibody reacts with mouse CD1d, a 48 kDa glycoprotein with structural homology to MHC class I molecules. While similar to MHC Class I, CD1d associates with beta2m, functionally CD1d is similar to MHC Class II. 1B1 detects CD1d at varying levels on mouse leukocytes. 1B1 detects beta2m associated CD1d.

Applications Reported: The 1B1 antibody has been reported for use in flow cytometric analysis. 1B1 has also been reported in in vivo and in vitro studies.

Applications Tested: The 1B1 antibody has been tested by flow cytometric analysis of mouse splenocytes. This can be used at less than or equal to 1 µg per test. A test is defined as the amount (µg) of antibody that will stain a cell sample in a final volume of 100 µL. Cell number should be determined empirically but can range from 10⁵ to 10⁸ cells/test. It is recommended that the antibody be carefully titrated for optimal performance in the assay of interest.

Storage and handling: Use in a sterile environment.

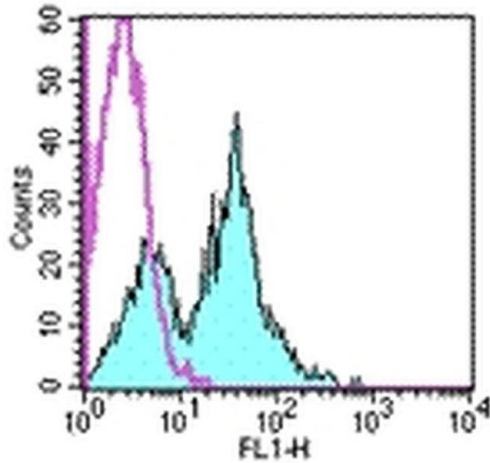
Filtration: 0.2 µm post-manufacturing filtered.

Purity: Greater than 90%, as determined by SDS-PAGE.

Endotoxin Level: Less than 0.001 ng/µg antibody, as determined by LAL assay.

Aggregation: Less than 10%, as determined by HPLC.

Product Images For CD1d Monoclonal Antibody (1B1), Functional Grade, eBioscience™



CD1d Antibody (16-0011-82) in Flow

Staining of BALB/c splenocytes with 1.0 µg of Rat IgG2b K Isotype Control Functional Grade Purified (Product # 16-4031-81) (open histogram), or 1.0 µg of Anti-Mouse CD1d Functional Grade Purified (filled histogram) followed by Anti-Rat IgG FITC (Product # 11-4811-85). Total viable cells were used for analysis.

[View more figures on thermofisher.com](https://www.thermofisher.com)

8 References

Western Blot (1)

PloS one FHL1 reduces dystrophy in transgenic mice overexpressing FSHD muscular dystrophy region gene 1 (FRG1). "Published figure using CD1d monoclonal antibody (Product # 16-0011-82) in Western Blot" Authors: Feeney SJ,McGrath MJ,Sriratana A,Gehrig SM,Lynch GS,D'Arcy CE,Price JT,McLean CA,Tupler R,Mitchell CA	Species Not Applicable Dilution Not Cited Year 2015
--	---

Flow Cytometry (5)

PloS one Multiple functional therapeutic effects of TnP: A small stable synthetic peptide derived from fish venom in a mouse model of multiple sclerosis. "Published figure using CD1d monoclonal antibody (Product # 16-0011-82) in Flow Cytometry" Authors: Komegae EN,Souza TA,Grund LZ,Lima C,Lopes-Ferreira M	Species Not Applicable Dilution Not Cited Year 2017
---	---

Nature communications NFATc1 supports imiquimod-induced skin inflammation by suppressing IL-10 synthesis in B cells. "Published figure using CD1d monoclonal antibody (Product # 16-0011-82) in Flow Cytometry" Authors: Alrefai H,Muhammad K,Rudolf R,Pham DA,Klein-Hessling S,Patra AK,Avots A,Bukur V,Sahin U,Tenzer S,Goebeler M,Kerstan A,Serfling E	Species Not Applicable Dilution Not Cited Year 2016
--	---

[View more Flow references on thermofisher.com](#)

Neutralization (2)

BMC gastroenterology Impaired liver regeneration is associated with reduced cyclin B1 in natural killer T cell-deficient mice. "16-0011 was used in Blocking experiments to study the role of natural killer T cells in liver regeneration, and their association with cyclin B1 and IL-6." Authors: Ben Ya'acov A,Meir H,Zolotaryova L,Ilan Y,Shteyer E	Species Mouse Dilution Not Cited Year 2017
---	--

More applications with references on thermofisher.com

For Research Use Only. Not for use in diagnostic procedures. Not for resale without express authorization. Products are warranted to operate or perform substantially in conformance with published Product specifications in effect at the time of sale, as set forth in the Production documentation, specifications and/or accompanying package inserts ("Documentation"). No claim of suitability for use in applications regulated by FDA is made. The warranty provided herein is valid only when used by properly trained individuals. Unless otherwise stated in the Documentation, this warranty is limited to one year from date of shipment when the Product is subjected to normal, proper and intended usage. This warranty does not extend to anyone other than the Buyer. Any model or sample furnished to Buyer is merely illustrative of the general type and quality of goods and does not represent that any Product will conform to such model or sample. NO OTHER WARRANTIES, EXPRESS OR IMPLIED, ARE GRANTED INCLUDING WITHOUT LIMITATION, IMPLIED WARRANTIES OF MERCHANTABILITY, FITNESS FOR ANY PARTICULAR PURPOSE, OR NON-INFRINGEMENT. BUYER'S EXCLUSIVE REMEDY FOR NON-CONFORMING PRODUCTS DURING THE WARRANTY PERIOD IS LIMITED TO REPAIR, REPLACEMENT OF OR REFUND FOR THE NON-CONFORMING PRODUCT(S) AT SELLER'S SOLE OPTION. THERE IS NO OBLIGATION TO REPAIR, REPLACE OR REFUND FOR PRODUCTS AS THE RESULT OF (I) ACCIDENT, DISASTER OR EVENT OF FORCE MAJEURE, (II) MISUSE, FAULT OR NEGLIGENCE OF OR BY BUYER, (III) USE OF THE PRODUCTS IN A MANNER FOR WHICH THEY WERE NOT DESIGNED, OR (IV) IMPROPER STORAGE AND HANDLING OF THE PRODUCTS. Unless otherwise expressly stated on the Product or in the documentation accompanying the Product, the Product is intended for research only and is not to be used for any other purpose, including without limitation, unauthorized commercial uses, in vitro diagnostic uses, ex vivo or in vivo therapeutic uses, or any type of consumption by or application to human or animals.